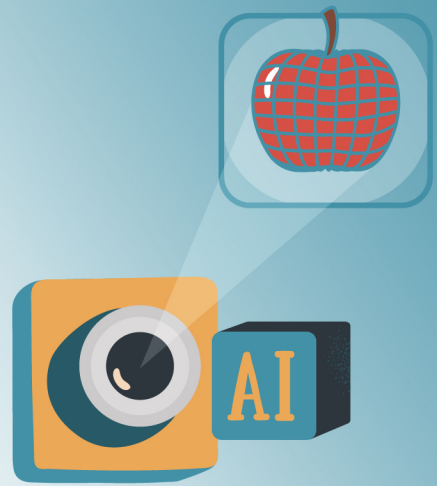


Join Our **Sleep & Safety** Monitoring Study

Help us enhance health and safety for people with developmental disabilities.



Why Participate?

Life-Saving Health and Safety Features

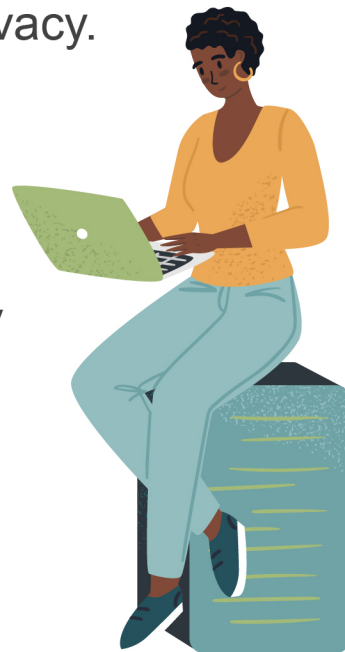
Continuous, non-invasive monitoring to alert caregivers to critical health issues.

Privacy Protection

Captures only thermal data, ensuring privacy.

Enhanced Service Delivery

Our AI-powered system enhances safety and quality of care by providing real-time alerts and clinical insights, enabling more proactive and individualized care plans for people with complex medical needs.



Research Participants Needed

- Seizure disorders
- Sleep disturbances
- Respiratory conditions (e.g., tracheostomy)
- High risk of pulmonary edema and pneumonia
- Need for skilled overnight monitoring

Interested?

Scan the QR code to learn more and sign up.



Collaboration and Support

This is a Transformative Technology Project funded by DODD



**Department of
Developmental
Disabilities**