

Athens County

Coordinated Transportation Plan

2018

Athens County

For more information about this plan please contact Jessie Schmitzer, Athens County Mobility Manager at 740-594-8499 or jessie.schmitzer@hapcap.org

Funding for the development of this plan was provided by the Ohio Department of Transportation

TABLE OF CONTENTS

Contents

Executive Summary.....	5
I. Geographic Area	8
II. Population Demographics.....	14
III. Assessment of Available Services	20
Existing Transportation Services.....	21
List of Transportation Service Providers.....	21
Assessment of Community Support for Transit.....	56
Safety	58
Vehicles	59
Summary of Existing Resources	66
IV. Assessment of Transportation Needs and Gaps.....	66
Local Demographic and Socio-Economic Data.....	67
Analysis of Demographic Data	71
General Public and Stakeholder Meetings/Focus Groups	71
Surveys.....	72
Athens County Transportation Survey for the General Public	72
Notable Comments	76
Notable Comments	77
Final Insights and Analysis of Data: General Population Survey.....	78
Athens County Transportation Survey for Individuals Age 60+.....	79
Notable Comments	82
Notable Comments	83
Final Insights and Analysis of Data: Individuals Age 60+	84
Athens County Transportation Survey for Individuals with Disabilities	85
Notable Comments	89
Final Insights and Analysis of Data: Individuals with Disabilities.....	90
Athens County Transportation Survey for Social Services and Non-Profits	91

Notable Comments:	94
Final Insights and Analysis of Data: Social Services / Non-Profit Survey	95
Roundtable Key Insights and Notable Comments	96
Chauncey Transportation Round Table	96
Coolville Transportation Round Table	97
Athens City Transportation Roundtable for Seniors.....	98
Nelsonville Transportation Roundtable	98
The Plains Transportation Roundtable	98
Glouster Transportation Round Table	99
Athens City Transportation Roundtable for Individuals with Disabilities.....	99
Athens City Transportation Roundtable for the General Public.....	100
Albany Transportation Roundtable.....	101
Challenges to Coordinated Transportation.....	102
Summary of Unmet Mobility Needs	102
V. Goals and Strategies	103
Developing Strategies to Address Gaps and Needs.....	103
Goal #1:.....	104
Goal #2:.....	105
Goal #3:.....	106
Goal #4:.....	107
Goal #5:.....	108
Goal #6:.....	109
Goal #7:.....	110
Goal #8:.....	111
Goal #9:.....	112
Goal #10:.....	113
VI. Plan Adoption	114
Appendix A: List of Planning Committee Participants	115
Agency Representation.....	115
Appendix B: List of Annual Reviews and Plan Amendments	116
Annual Review - August 23 rd , 2018	116

Amendment 116

Appendix C: Definitions..... 117

Appendix D: Athens Transportation Survey: General Public 119

Appendix E: Athens Transportation Survey: 60+ 126

Appendix F: Athens Transportation Survey: Individuals with Disabilities 135

Appendix G: Athens Transportation Survey: Social Services / Non-Profit..... 140

Appendix H: Athens County Active Transportation Plan 146

Executive Summary

This plan is the officially approved Public Transit-Human Services Transportation Plan for Athens County. The plan was initially developed in 2007-2008 and updated in 2013. This plan fulfills the requirements of the Federal Transit Administration (FTA) under the Fixing America's Surface Transportation (FAST) Act, signed into law as a reauthorization of surface transportation programs through Fiscal Year 2020.

According to requirements of the FAST Act, locally developed coordinated public transit-human services transportation plans must be updated to reflect the changes established by the FAST Act legislation. The FAST Act applies new programs and rules for all Fiscal Year 2016 funds and authorizes transit programs for five (5) years.

Transportation is a critical component of the communities in Athens County. Transportation provides access to jobs, education, health care, human services and allows all community members, including older adults and people with disabilities, to live independently and engage in community life. It is the purpose of this plan for local stakeholders to work collaboratively to do the following activities:

1. Identify all community resources including:
 - Fixed-route public transportation systems
 - Public door-to-door accessible van providers
 - Senior transportation providers
 - Veteran transportation providers
 - Transportation Network Company services
 - Inter-city transportation providers
 - Taxi services
 - Paratransit services
 - Door-to-door transportation services
 - Ride share services
 - Hockhocking Adena bikeway resources
 - Bike lane access
 - Complete Streets resources
 - Accessible sidewalks
 - Pedestrian and transportation safety resources

2. Identify and Prioritize community transportation needs:
 - Expansion of transportation services throughout the county
 - Additional capacity for accessible, affordable, public door-to-door transit services
 - Extended morning, night, and weekend hours
 - Continuation of the Athens County Mobility Management Program
 - Education and outreach of services
 - Coordination of services
 - Higher frequency of buses on fixed-route systems
 - Implementation of the Athens County Active Transportation Plan
 - Expansion of the Hockhocking Adena bikeway

Address energy and environmental concerns
Implement lowered or free transportation fares

3. Establish a clear plan for achieving shared goals

Athens County will continue to coordinate efforts with all transportation providers to achieve the goals and needs as listed in the coordinated transportation plan. Through partnerships and shared priorities, the county, cities, villages, residents, businesses, social service agencies, and transportation providers will work together towards achieving the goals as stated in this document. The Athens County Mobility Management program will utilize this plan as a roadmap for future transportation initiatives throughout the county and region.

Fundamental to the Coordinated Transportation Plan process is the active and meaningful involvement of stakeholders. For projects selected for funding under the Section 5310 program, participation in planning activities must include participation and/or representation of the following, at minimum:

- Seniors;
- Individuals with disabilities;
- People with low incomes;
- Public, private and non-profit transportation providers;
- Human services providers;
- The general public;
- Social service providers;
- Regional planning organizations;

In order to ensure participation from the above groups the following stakeholder involvement activities were performed:

The Athens County Coordinated Plan Planning Committee consisted of representatives from the following organizations:

- | | |
|---|---|
| • Athens City | • Athens County |
| • Athens County Board of Developmental Disabilities | • Buckeye Hills Regional Council |
| • Athens County Children Services | • Hocking Athens Perry Community Action |
| • Athens City-County Health Department | • United Seniors |
| • Athens County Public Libraries | • An individual with a disability |
| • Athens County Department of Job and Family Services | • An individual aged 60+ |

Six (6) group specific transportation surveys were released to the public:

- | | |
|---------------------------------|--|
| • General Public | • Transportation Providers |
| • Seniors | • Social Service Providers / Non-Profits |
| • Individuals with Disabilities | • Business / For-Profits |

The surveys were distributed widely online. Physical copies of the surveys were distributed at the following locations:

- Athens County Public Library locations
- Athens City-County Health Department
- The Athens Village
- Southeastern Ohio Food Bank Meals-on-Wheels (Athens County only)
- Southeastern Ohio Food Bank congregate meal sites (Athens County only)
- Advocacy, Training, Career, Opportunities (ATCO)
- Hocking Athens Perry Community Action (HAPCAP) Home Energy Assistance Program (HEAP)
Athens County office

A total of nine (9) transportation round tables were held in the following accessible locations:

October 20th, 2017: The Friends Meeting House - Chauncey, Ohio

October 23rd, 2017: Coolville Public Library - Coolville, Ohio

October 24th, 2017: Athens City Public Library - Athens City, Ohio (Seniors)

October 25th, 2017: Nelsonville Public Library - Nelsonville, Ohio

October 26th, 2017: The Plains Public Library - The Plains, Ohio

October 30th, 2017: Glouster Public Library - Glouster, Ohio

November 1st, 2017: Athens City Public Library - Athens City, Ohio (Disabilities)

November 2nd, 2017: Athens City Public Library - Athens, City, Ohio (General Population)

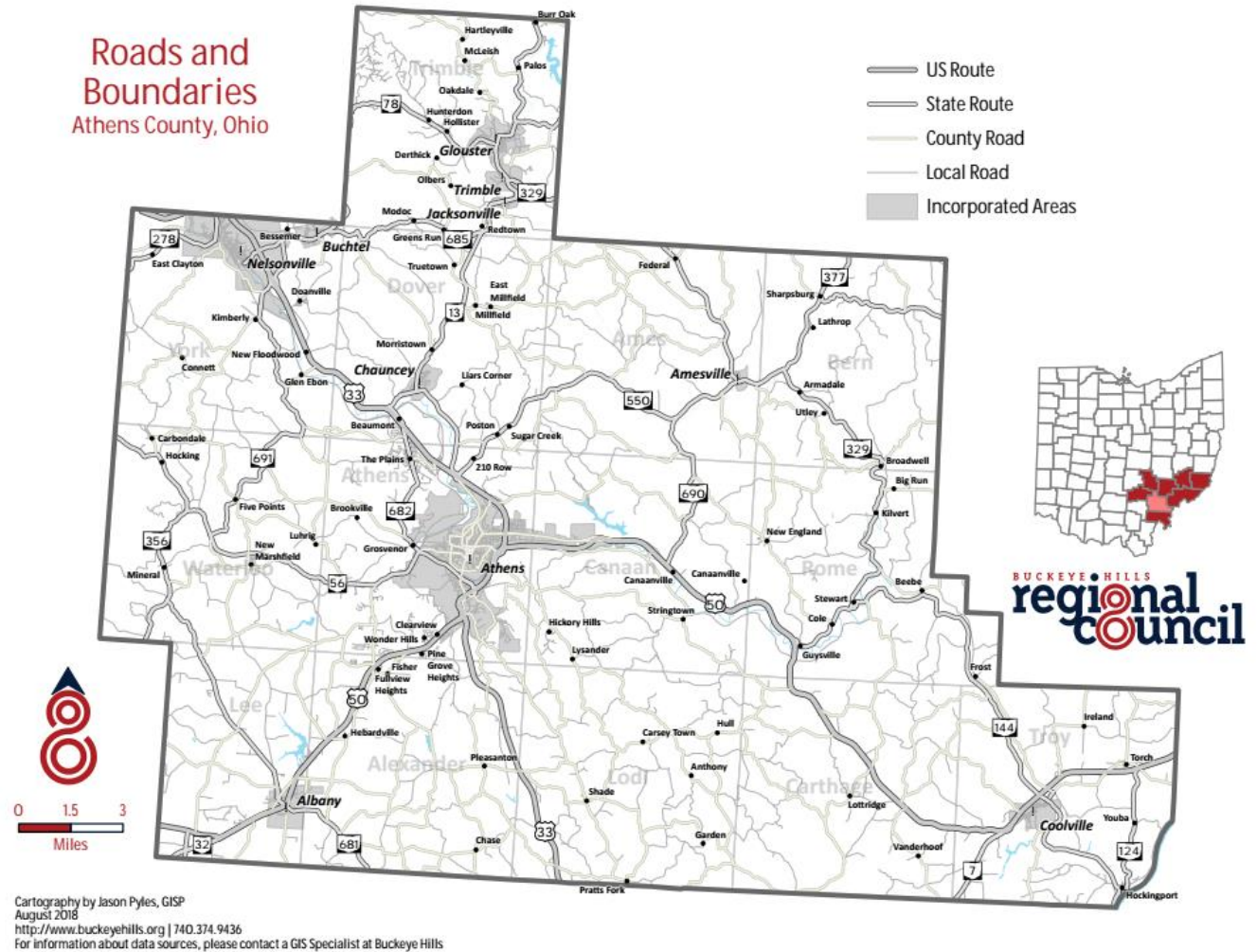
November 7th, 2017: Wells-Albany Public Library - Albany, Ohio

The roundtables' dates, locations, and times were distributed on flyers, advertised in The Athens News a total of six times and in The Athens Messenger a total of two times, were announced on WOUB public radio, and were advertised via numerous social media outlets and partnering websites. All round tables were held at local public libraries or accessible meeting halls with transportation and accommodations offered in advance.

This plan was developed and adopted by the Athens County Coordinated Transportation Plan Planning Committee. More information about the planning committee can be found in Appendix A.

I. Geographic Area

FIGURE 1: BASIC MAP OF THE GEOGRAPHIC AREA COVERED BY THE PLAN



Geographically, Athens County is located in Southeastern Ohio, in the Appalachian region of the state. It has a total area of 508 square miles, of which 504 square miles is land and 4.8 square miles is water and features steep, rugged hills, deeply dissected by stream valleys.

Due to its location in the Unglaciated Allegheny Plateau region of Ohio it's marked by steep hills and valleys in every part of the county, most dramatically on the Eastern side.

Much of Athens County is within the Hocking River watershed, with smaller areas in the Shade River and Raccoon Creek watersheds. Several streams, creeks, and rivers run through Athens County. The Southeastern section of the county makes contact with the Ohio River.

There are two cities identified:

- Athens City
- Nelsonville

The City of Athens is the largest municipality in the county and serves as the county seat.

There are eight villages identified:

- Albany
- Amesville
- Buchtel
- Chauncey
- Coolville
- Glouster
- Jacksonville
- Trimble

There are five census-designated places identified:

- Hockingport
- Millfield
- New Marshfield
- Stewart
- The Plains

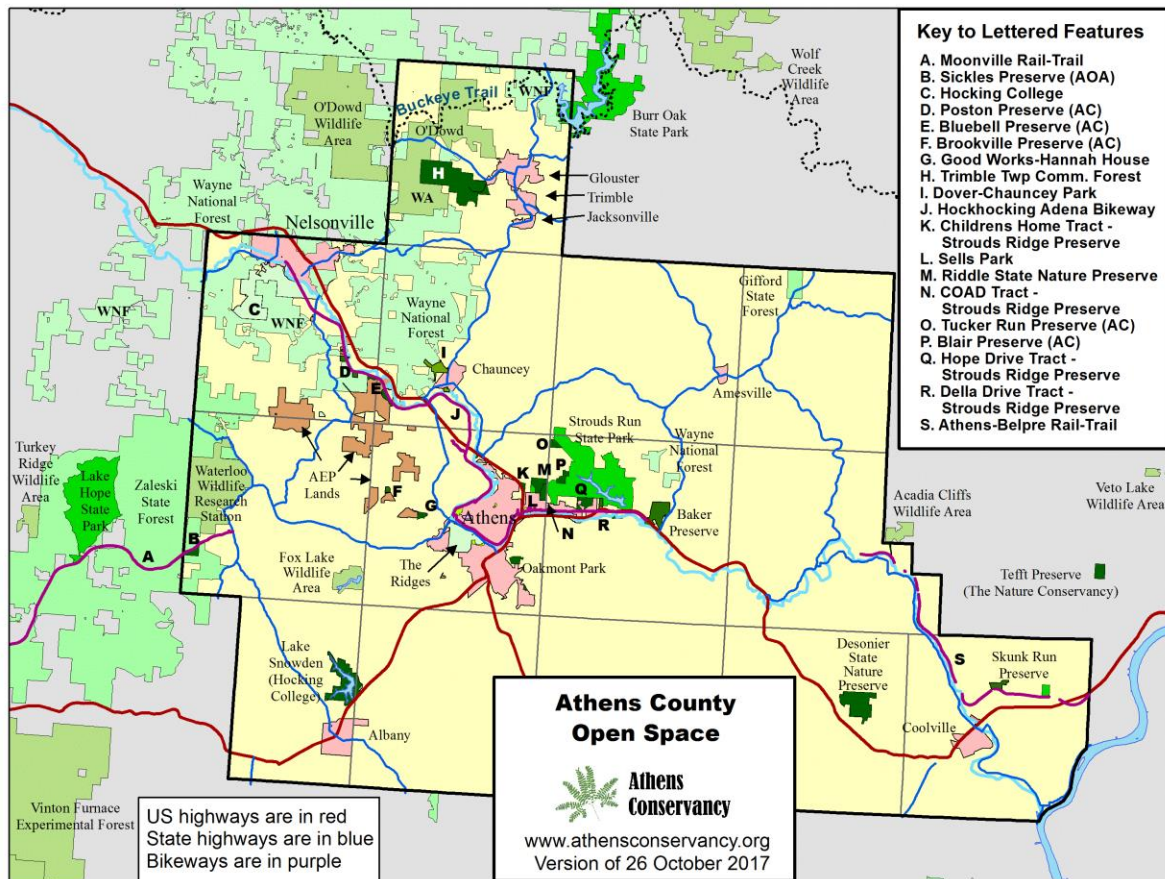
There are thirty unincorporated communities:

- Beaumont
- Beebe
- Bessemer
- Big Run
- Burr Oak
- Canaanville
- Carbondale
- Doanville
- Frost
- Garden
- Glen Ebon
- Guysville
- Hamley Run
- Hartleyville
- Hebardville
- Imperial
- Kilvert
- Lottridge
- Luhrig
- Mineral
- Modoc
- New England
- New Floodwood
- Pleasanton
- Pratts Fork
- Redtown
- Shade
- Sharpsburg
- Torch
- Utley

Regionally, Athens County is bordered by:

- Perry and Morgan Counties (North)
- Meigs County (South)
- Hocking and Vinton Counties (West)
- Washington County and the Ohio River, bordering West Virginia (East)

FIGURE 2: MAP OF ATHENS COUNTY PUBLIC LANDS AND TRAIL SYSTEMS

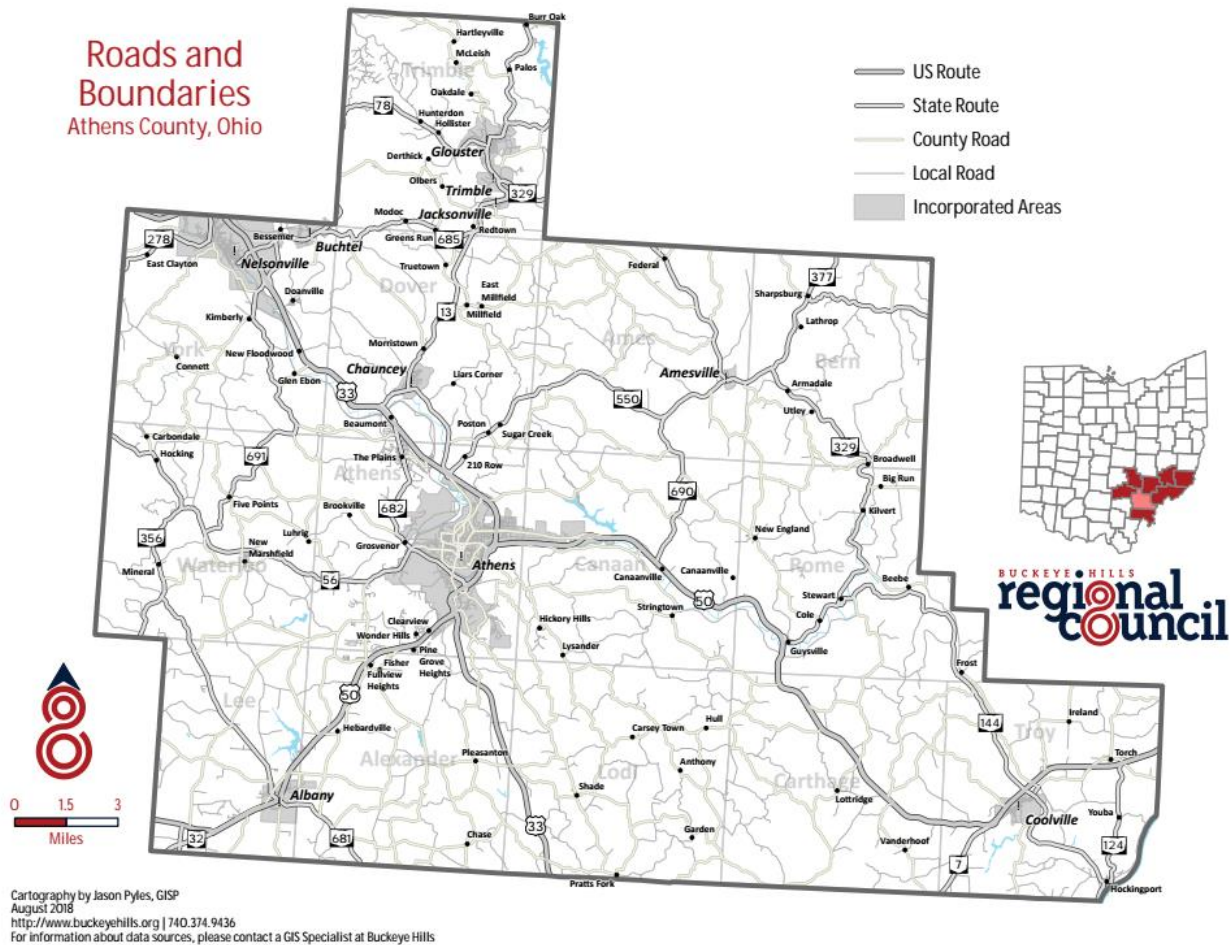


The county identifies as part of the Rural Transportation Planning Organization (RTPO) and contains several Federal and State lands including:

- Wayne National Forest
- Tom Jenkins Dam
- Belleville Lock and Dam Public Access Area
- Burr Oak State Park
- Strouds Run State Park
- Acadia Cliffs State Nature Preserve
- Fox Lake Wildlife Area
- Waterloo Wildlife Research Station
- Marie J. Desonier State Nature Preserve
- Riddle State Nature Preserve
- Gifford State Forest
- Waterloo State Forest
- Zaleski State Forest

These public lands are utilized by local community members and tourists for a variety of activities including: hiking, hunting, mountain biking, trail running, birding, camping, kayaking and canoeing, and several other activities. A majority of the public lands are located in the Northwestern areas of the county.

FIGURE 4: MAP OF ATHENS COUNTY ROADS AND HIGHWAYS



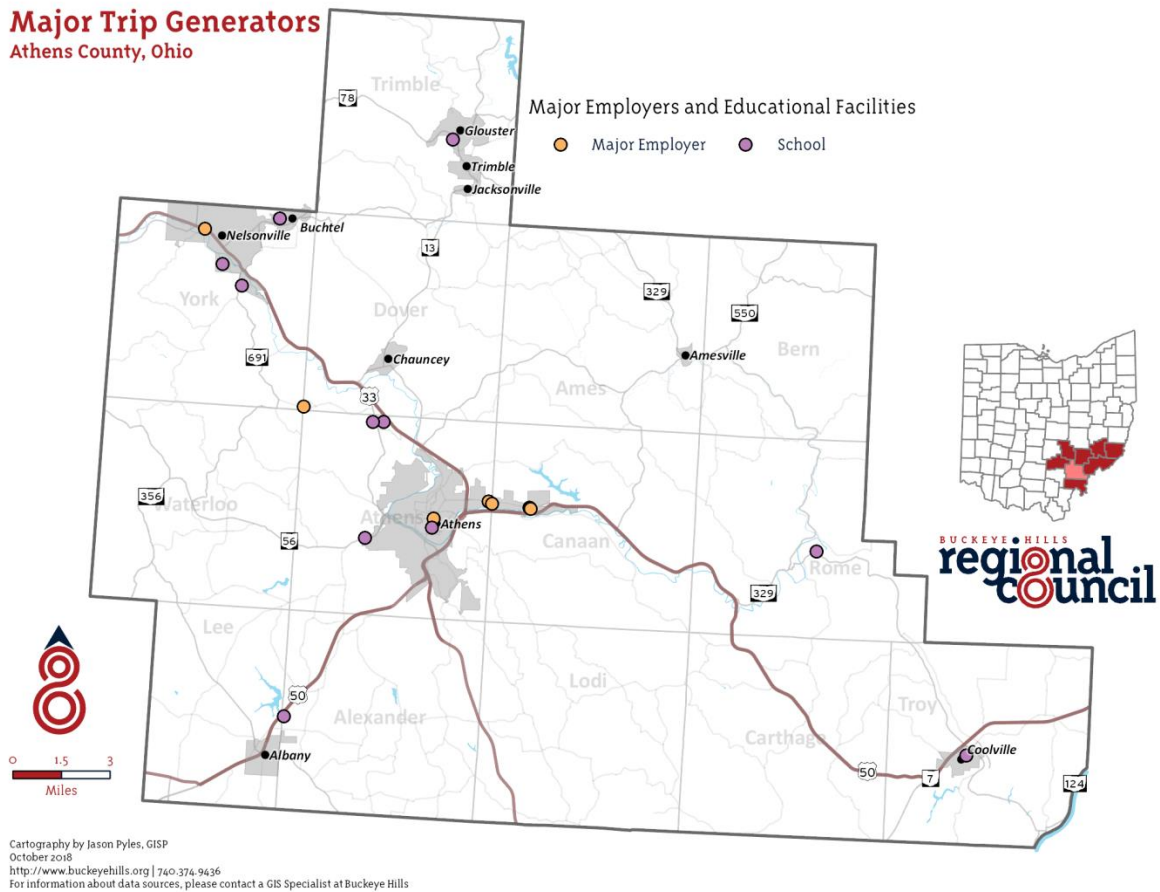
Athens County is serviced by three major highways: US33, US50, and US32.

US 33 spans from Hocking County (Northwest) to Meigs County (South) cutting through the mid-Southern region of the County. It continues on to Columbus connecting to major Interstates 70 and 71 and to Ravenswood, West Virginia connecting to I-77 and beyond.

State Route 50 and 32 extend from Vinton County (Southwest) to Washington County (Southeast). SR 50 and 32 continue on to Cincinnati to the West connecting to major Interstates 71, 74, and 75 and to Parkersburg, West Virginia connecting to Interstate 77 and beyond to the East.

Much of Athens County is serviced by State Routes that connect villages such as Chauncey, Jacksonville, Trimble, Glouster, Amesville, Coolville and Albany. Often these roads contain sharp turns and hilly terrain with little lighting. Notable roads that connect the County include SR13, SR56, SR550, SR681, SR329, SR144 and SR356, some serving as the only roads connecting rural areas to major highways.

FIGURE 5: MAJOR TRIP GENERATORS IN THE GEOGRAPHIC AREA



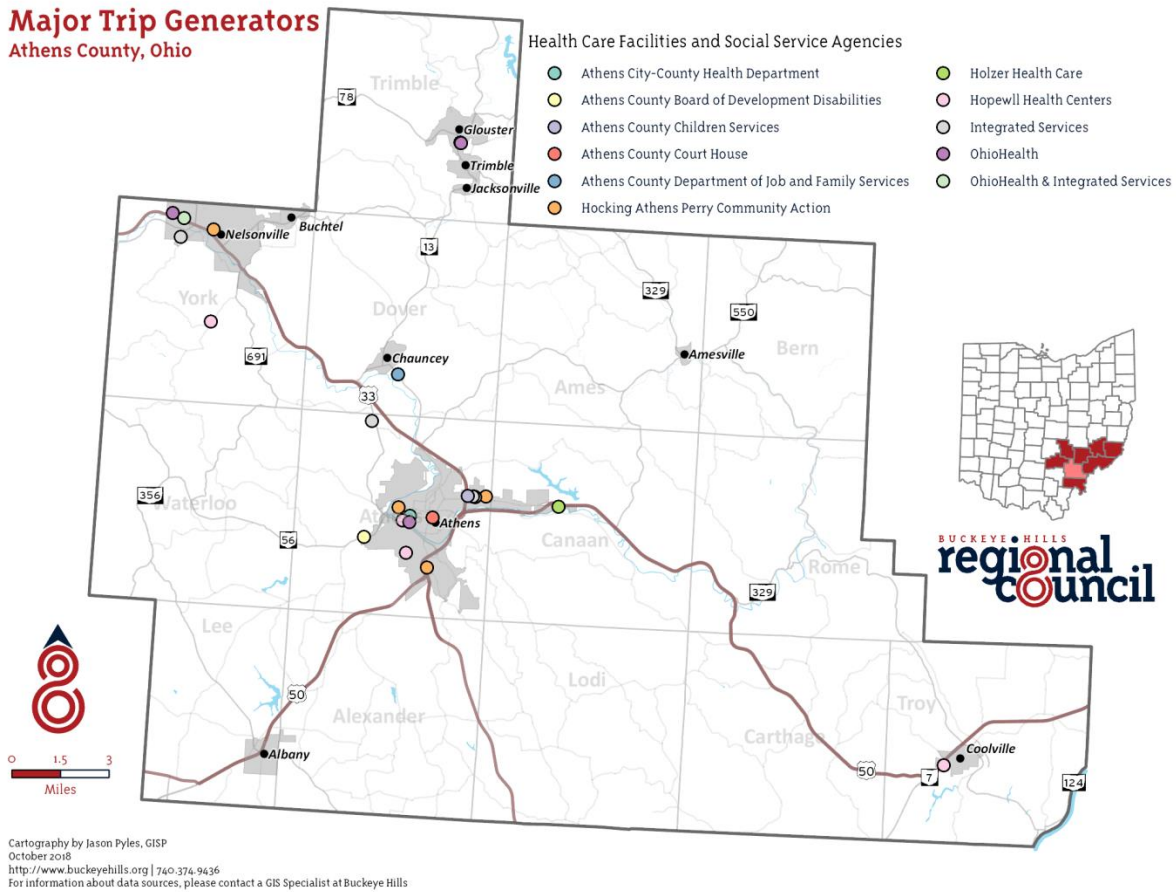
Major employers in Athens County include:

- Rocky Boot Company
- Wal-Mart Stores Inc
- Kroger
- Quidel
- Sunpower Inc.
- Global Cooling
- City of Athens

Major education facilities in the county include:

- Ohio University
- Hocking College
- Tri-County Career Center
- Athens City Schools
- Federal Hocking Schools
- Alexander Schools
- Nelsonville-York Schools
- Trimble Schools
- Amesville Schools
- Coolville Schools
- Beacon School

Major Trip Generators Athens County, Ohio



Major healthcare facilities including hospitals, mental health facilities, and urgent care branches include:

- OhioHealth
- Hopewell Health Centers
- OhioHealth & Integrated Services (Mary Hill Center)
- Integrated Services
- Athens City-County Health Department
- Holzer Health Care

Major social services agencies in the county include:

- Athens City-County Health Department
- Athens County Board of Developmental Disabilities
- Athens County Children Services
- Athens County Court House
- Athens County Department of Job and Family Services
- Hocking Athens Perry Community Action
- Integrated Services

Most major trip generators in the County are located in the city of Athens and the city of Nelsonville. In Athens City major trip generators are located mostly on East State Street, Richland Avenue, and Columbus Road. In Nelsonville they're located close to East Canal Street, Hocking Parkway, and around Public Square in the center of town.

Major employers in the rural areas of the county are local schools, strategically spread throughout the county to ensure that all areas are covered by a close district.

II. Population Demographics

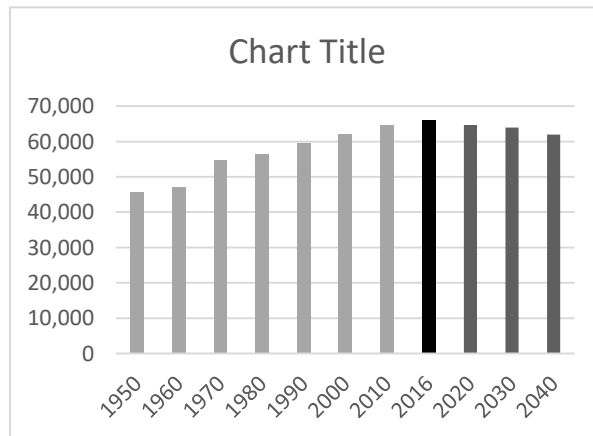
To better assess demand for transit services in Athens County, specific characteristics of the population must be examined. Athens County currently has an estimated total population of 66,186 individuals.

Projections show a minor decline of population totals over a twenty-year period (2020-2040). Of the total population roughly 25,000 reside in the City of Athens and 5000 in the City of Nelsonville.

Chart 1: Total Population with Projections

Total Population		Estimated	
Census		2011	65,102
1800		2012	64,605
1810	2,791	2013	64,432
1820	6,338	2014	64,592
1830	9,787	2015	65,699
1840	19,109	2016	66,186
1850	18,215		
1860	21,364		
1870	23,768		
1880	28,411		
1890	35,194		
1900	38,730		
1910	47,798		
1920	50,430		
1930	44,175		
1940	46,166		
1950	45,839		
1960	46,998		
1970	54,889		
1980	56,399		
1990	59,549		
2000	62,223		
2010	64,757		
2016	66,186		
2020	64,700		
2030	63,960		
2040	61,960		

Projected	
2020	64,700
2030	63,960
2040	61,960



*Ohio County Profiles
Prepared by the Office of Research

Chart 2: Total Population by Age Group

The average age of the population is 28 years old with a majority (30.2%) falling in the 19 to 25-year-old category. Currently there are an estimated 13,854 individuals aged 45 to 65 years old and 7,152 aged 65 years and more.

Population by Age	Number	Percent
ACS Total Population	64,974	100.00%
Under 5 years	2,658	4.10%
5 to 17 years	7,318	11.30%
18 to 24 years	19,627	30.20%
25 to 44 years	14,365	22.10%
45 to 64 years	13,854	21.30%
65 years and more	7,152	11.00%
Median Age	28	

*OHIO COUNTY PROFILES: ATHENS COUNTY

Prepared by the Office of Research

<https://development.ohio.gov/files/research/C1006.pdf>

Chart 3: Total Population by Race

Athens County is 91% white. 8% of the population identifies as one or more of the following:

Population by Race	Number	Percentage
ACS Total Population	64,974	100.00%
White	59,154	91.00%
African-American	1,513	2.30%
Native American	330	0.50%
Asian	2,168	3.30%
Pacific Islander	25	0.00%
Other	217	0.30%
Two or More Races	1,567	2.40%
Hispanic (may be of any race)	1,180	1.80%
TOTAL MINORITY	6,461	9.90%

*OHIO COUNTY PROFILES: ATHENS COUNTY

Prepared by the Office of Research

<https://development.ohio.gov/files/research/C1006.pdf>

Chart 4: Number and percentage of people with disabilities

Of the total estimated population of 64,283 roughly 9,822 (15.3%) individuals identify with having a disability. A majority of those individuals are in the age range of 18 to 64 years old. The most common disability types identified are individuals with ambulatory difficulty and cognitive difficulty.

	Total Population	With a disability	Percent with a disability
Total	64,283	9,822	15.3%
Male	32,056	5,194	16.2%
Female	32,227	4,628	14.4%

Age

Age Group	Total Population	With a disability
Under 5 years	2,658	69
5 to 17 years	7,294	652
18 to 34 years	27,366	2,029
35 to 64 years	20,040	4,354
65 to 74 years	4,211	1,305
75 years and over	2,714	1,413

Disability Type

Disability Type	Total
With a hearing difficulty	2,654
With vision difficulty	1,978
With cognitive difficulty	4,493
With an ambulatory difficulty	4,699
With a self-care difficulty	1,545
With an independent living difficulty	2,922

*S1810 DISABILITY CHARACTERISTICS
2011-2015 American Community Survey 5-Year Estimates

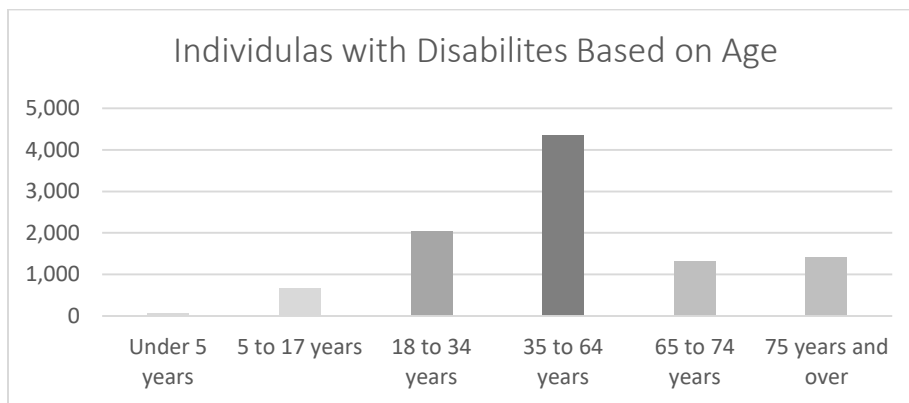


Chart 5: Number and percentage of households with incomes below the federal poverty level

Chart 5 demonstrates that families with no children present and married-couple families with their own children make up the majority of households with incomes below the federal poverty level.

Poverty Status of Families by Family Type by Presence of Related Children

	Number	Percent
Total Families	12,464	100%
Married-couple families with own children	3,180	25.5%
Male householder, no wife present, with own children	711	5.7%
Female householder, no husband present, with own children	1,314	10.5%
Families with no own children	7,259	58.2%

*Ohio County Profiles
Prepared by The Office of Research

Chart 6: Number and percentage of individuals with incomes below the federal poverty level

Athens County is considered to be the poorest County in the State with a large percentage of the population living at or above the 200% Federal Poverty Guidelines.

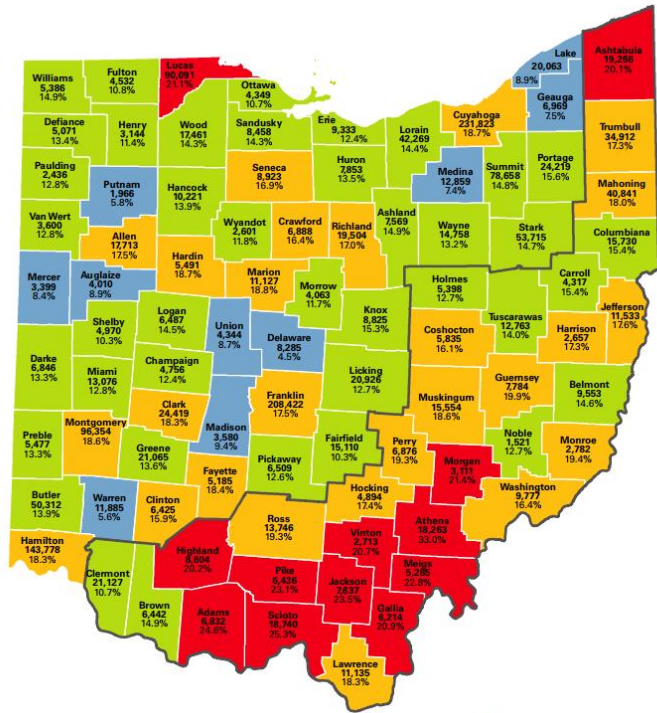
Ratio of Income to Poverty Level

	Number	Percent
Population for whom poverty status is determined	55,353	100.00%
Below 50% of the poverty level	10,544	19.00%
50% to 99% of poverty level	7,719	13.90%
100% to 124% of poverty level	2,650	4.80%
125% to 149% of poverty level	2,734	4.90%
150% to 184% of poverty level	3,523	6.40%
185% to 199% of poverty level	927	1.70%
200% of poverty level or more	27,256	49.20%

*OHIO COUNTY PROFILES: ATHENS COUNTY
Prepared by the Office of Research
<https://development.ohio.gov/files/research/C1006.pdf>

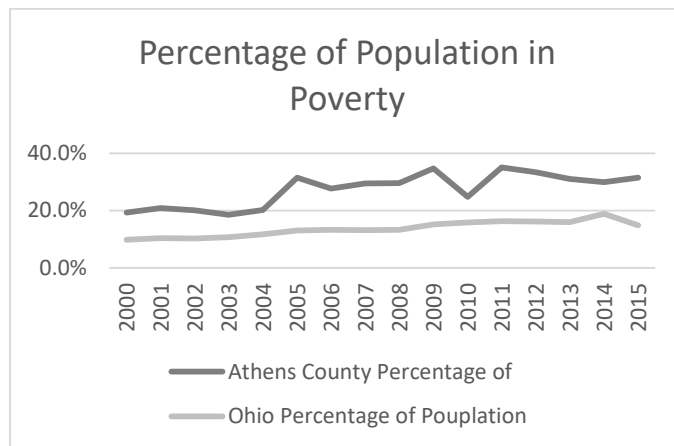
Ohio

Poverty in Ohio by County 2011-2015 American Community Survey



14

The chart below shows Athens County's percentage of poverty as compared to the State average from year 2000 to year 2015.



*THE OHIO POVERTY REPORT 2017
 Prepared by the Office of Research
<https://www.development.ohio.gov/files/research/p7005.pdf>

Chart 7: Percent of population that speak English “Less than very well”

English is spoken by a majority of residents in Athens County with close to 5% of the population speaking English less than “very well”.

Language Spoken at Home	Total	Percent
Population 5 years and over	62,316	xx
English Only	58,830	94.4%
Language other than English	3,486	5.6%
Speak English less than "very well"	1,162	1.9%
Spanish	646	1.0%
Speak English less than "very well"	130	0.2%
Other Indo-European languages	743	1.2%
Speak English less than "very well"	101	0.2%
Asian and Pacific Islander languages	1,545	2.5%
Speak English less than "very well"	720	1.2%
Other Languages	552	0.9%
Speak English less than "very well"	211	0.3%

*DP02 SELECTED SOCIAL CHARACTERISTICS IN THE UNITED STATES
2011-2015 American Community Survey 5-Year Estimate

III. Assessment of Available Services

Conducting an evaluation of service provider capabilities and analyzing the existing gaps and duplications of services for transportation resources in each community, provides transportation planners with the information needed to implement changes that will improve the network of transportation resources and services in Athens County and across county lines.

The lead agency identified stakeholders to participate in the assessment of available services. These stakeholders included those who were represented in the current or past planning committees, as well as others who the planning committee identified as being appropriate stakeholders.

Interviews were conducted with each of the identified stakeholders.

The purpose of the interview was to offer the stakeholders an opportunity to discuss the specific transportation services, gaps, needs, and priorities for their respective service areas or communities.

When applicable, information reported in the previous coordinated plan was used to supplement information gathered during this planning effort.

Existing Transportation Services

The following information is based on tabulations from the survey and interview results. A total of 41 organizations provided information about their services.

List of Transportation Service Providers

1. Agency Name: Alexander School District

Transportation Service Type: Fixed-route school transportation

Other Services Provided: None

Contact Information: 740-698-8831

Hours: Based on school hours

Service Area: Ohio

Eligibility Requirements: Only available for students and staff

Web-site: <http://www.alexanderschools.org/>

2. Agency Name: Area Agency on Aging

Transportation Service Type: Provides transportation waivers and transportation referrals

Other Services Provided: None

Contact Information: 1-800-331-2644

Hours: Monday – Friday 8am-4pm

Service Area: Ohio

Eligibility Requirements: Must meet age requirements

Web-site: www.buckeyehills.org/aging/

3. Agency Name: Athens Airport Express

Transportation Service Type: Taxi service

Other Services Provided: None

Contact Information: 740-590-4686

Hours: 24/7

Service Area: Ohio

Eligibility Requirements: None, open to the public

Web-site: www.athensairportexpress.com

4. Agency Name: Athens City-County Health Department
Transportation Service Type: Provides waivers, vouchers, and referrals
Other Services Provided: Safety training
Contact Information: 740-592-4431
Hours: M-F 8am-4pm
Service Area: Athens County
Eligibility Requirements: None, open to the public
Web-site: www.health.athens.oh.us/

5. Agency Name: Athens City School District
Transportation Service Type: Fixed-route school transportation
Other Services Provided: None
Contact Information: 740-797-4128
Hours: Based on school hours
Service Area: Ohio
Eligibility Requirements: Only available for students and staff
Web-site: <http://www.athenscsd.org/>

6. Agency Name: Athens County Board of Developmental Disabilities (ACBDD)
Transportation Service Type: Door-to-door, fixed-route, school transportation, provides vouchers
Other Services Provided: None
Contact Information: 740-594-3539
Hours: Monday –Friday 6am-4:30pm
Service Area: Athens County
Eligibility Requirements: Only available for agency clients
Web-site: www.athensbdd.org

7. Agency Name: Athens County Children Services
Transportation Service Type: Door-to-door, provides vouchers
Other Services Provided: None
Contact Information: 740-592-3061
Hours: Dependent on appointments and funding
Service Area: Athens County
Eligibility Requirements: Only available for agency clients
Web-site: www.athenschildrenergieservices.com

8. Agency Name: Athens County Department of Job and Family Services (ACDJFS)
Transportation Service Type: Non-Emergency Medical Transportation, providing vouchers, and purchasing services from other providers
Other Services Provided: None
Contact Information: 740-677-4206
Hours: Based on appointments
Service Area: Ohio
Eligibility Requirements: Must qualify under Job and Family Services guidelines
Web-site: www.jfs.athensoh.org/Transportation.htm

9. Agency Name: Athens County Head Start (Hocking Athens Perry Community Action)
Transportation Service Type: Fixed-route transportation for students
Other Services Provided: Free car seat program
Contact Information: 740-592-1124
Hours: Dependent on school times
Service Area: Athens County
Eligibility Requirements: Only available for agency clients
Web-site: <http://hapcap.org/headstart>

10. Agency Name: Athens County Re-Entry (Athens County Department of Job and Family Services)
Transportation Service Type: Purchases transportation from other providers and provides vouchers
Other Services Provided: None
Contact Information: 740-797-1405
Hours: Monday – Friday 8:00am-4:00pm
Service Area: Athens County
Eligibility Requirements: Only available for qualifying clients
Web-site: www.jfs.athensoh.org/reentryprogram.htm

11. Agency Name: Athens Go-To Cab
Transportation Service Type: Taxi service
Other Services Provided: None
Contact Information: 740-594-8294
Hours: 24/7
Service Area: Athens County
Eligibility Requirements: None, open to the public
Web-site: www.athensgotocab.com

12. Agency Name: Athens Mobility Management Program (Hocking Athens Perry Community Action)
Transportation Service Type: Provides referrals, outreach, and travel training
Other Services Provided: Advocacy for transportation
Contact Information: 740-594-8499
Hours: Monday – Friday 8:00am-4:00pm
Service Area: Ohio
Eligibility Requirements: None, open to the public
Web-site: www.athensmobility.com

13. Agency Name: Athens On-Demand Transit (Hocking Athens Perry Community Action)
Transportation Service Type: Door-to-door
Other Services Provided: None
Contact Information: 740-597-2404
Hours: Monday –Friday 7:30am – 7:30pm
Service Area: Athens County
Eligibility Requirements: Seniors, individuals with disabilities, and low income community members
Web-site: www.athensondemand.com

14. Agency Name: Athens Public Transit (Hocking Athens Perry Community Action)
Transportation Service Type: Fixed-route system
Other Services Provided: Paratransit service, Bobcat pass, apartment complex transportation
Contact Information: 740-594-2424
Hours: Monday – Friday, 7am-10pm (depending on the bus line) Saturday, 8:45am-10pm (depending on the bus line)
Service Area: Athens City, The Plains, Chauncey
Eligibility Requirements: None
Web-site: www.athenstransit.org

15. Agency Name: Athens Veterans Association
Transportation Service Type: Door-to-door
Other Services Provided: None
Contact Information: 740-773-1141
Hours: Monday –Friday 8am-5pm
Service Area: Athens County
Eligibility Requirements: Only for veterans who qualify financially
Web-site: N/A

16. Agency Name: Athens Veterans Services
Transportation Service Type: Provides transportation referrals
Other Services Provided: None
Contact Information: 740-592-3216
Hours: Monday –Friday 8am-5pm
Service Area: Athens County
Eligibility Requirements: Only for veterans who qualify financially
Web-site: www.co.atnsoh.org/residents/veterans/index.php

17. Agency Name: Athens Village
Transportation Service Type: Providers vouchers and referrals
Other Services Provided: None
Contact Information: 740-447-0500
Hours: 24 hours
Service Area: Athens County
Eligibility Requirements: Must be a member
Web-site: www.theathensvillage.org/

18. Agency Name: Buckeye Hills Regional Council
Transportation Service Type: Provides waivers, vouchers, and referrals
Other Services Provided: Regional transportation planning
Contact Information: 1-800-331-2644
Hours: M-F 8am-4:30pm
Service Area: Athens, Hocking, Meigs, Monroe, Morgan, Noble, Perry, Washington counties
Eligibility Requirements: None, open to the public
Web-site: www.buckeyehills.org

19. Agency Name: Daybreak Transportation Services LLC

Transportation Service Type: Door-to-door

Other Services Provided: None

Contact Information: 740-401-9285

Hours: Based on appointments

Service Area: Ohio

Eligibility Requirements: None, open to the public

Web-site: www.daybreakambulette.com

20. Agency Name: Echoing Connections

Transportation Service Type: Door-to-door

Other Services Provided: None

Contact Information: 740-327-2311

Hours: Based on events and appointments

Service Area: Ohio

Eligibility Requirements: Only available for agency clients

Web-site: www.ehvi.org/adult-day-services/echoing-connections-of-southeast-ohio

21. Agency Name: Federal-Hocking School District

Transportation Service Type: Fixed-route student transportation

Other Services Provided: None

Contact Information: 740-662-6691

Hours: Dependent on school hours

Service Area: Ohio

Eligibility Requirements: Only available for students and facility

Web-site: www.fedhock.com

22. Agency Name: GoBus (Hocking Athens Perry Community Action)

Transportation Service Type: Inter-City bus

Other Services Provided: None

Contact Information: 1-888-95-GOBUS

Hours: Hours vary

Service Area: Ohio

Eligibility Requirements: None, open to the public

Web-site: www.ridegobus.com

23. Agency Name: Good Works

Transportation Service Type: Provides vouchers and purchasing transportation for other providers

Other Services Provided: None

Contact Information: 740-541-0816

Hours: N/A

Service Area: Athens County

Eligibility Requirements: Only available for agency clients

Web-site: www.good-works.net

24. Agency Name: Green Cab

Transportation Service Type: Taxi service

Other Services Provided: Medicaid transportation services

Contact Information: 740-594-7339

Hours: 24/7

Service Area: Ohio

Eligibility Requirements: None, open to public

Web-site: <https://www.facebook.com/AthensGreenCab/>

25. Agency Name: Haughland School
Transportation Service Type: Transportation for students
Other Services Provided: None
Contact Information: 740-249-1887
Hours: M-F 8am-4pm
Service Area: Athens County
Eligibility Requirements: Only available to students and staff
Web-site: www.hauglandlearningcenter.com/

26. Agency Name: HAVAR
Transportation Service Type: Door-to-door
Other Services Provided: None
Contact Information: 740-594-3433
Hours: Monday – Friday 7:30am-7:30pm
Service Area: Athens County
Eligibility Requirements: Only available for agency clients
Web-site: www.havar.org

27. Agency Name: Hocking College
Transportation Service Type: Transportation for students
Other Services Provided: None
Contact Information: 740-753-3591
Hours: Dependent on events
Service Area: Ohio
Eligibility Requirements: Only available to students and staff
Web-site: www.hocking.edu

28. Agency Name: Holzer Hospital (Athens County)
Transportation Service Type: Provides referrals to other transportation providers
Other Services Provided: None
Contact Information: 740-589-3100
Hours: 24/7
Service Area: N/A
Eligibility Requirements: Only available to agency clients
Web-site: www.holzer.org

29. Agency Name: Hopewell Health Centers (Athens County)
Transportation Service Type: Medical transportation, provides vouchers
Other Services Provided: None
Contact Information: 740-592-3091
Hours: Dependent on appointments and need
Service Area: Athens, Hocking, and Vinton counties
Eligibility Requirements: Only available to agency clients
Web-site: <http://www.hopewellhealth.org/>

30. Agency Name: Integrated Services
Transportation Service Type: Door-to-door, provides referrals to transportation providers and voucher programs
Other Services Provided: None
Contact Information: 740-594-6807
Hours: Dependent on need
Service Area: Ohio
Eligibility Requirements: Only available for agency clients
Web-site: www.integratedservice.org

31. Agency Name: Lyft
Transportation Service Type: Transportation Network Company (TNC) Services
Other Services Provided: None
Contact Information: 855-865-9553
Hours: 24/7
Service Area: Ohio
Eligibility Requirements: None, open to the public
Web-site: www.lyft.com

32. Agency Name: My Sister's Place
Transportation Service Type: Purchase services from transportation providers and provides vouchers
Other Services Provided: None
Contact Information: N/A
Hours: 24/7
Service Area: N/A
Eligibility Requirements: Only available to agency clients
Web-site: www.mspathens.org

33. Agency Name: Nelsonville-York School District
Transportation Service Type: Fixed-route student transportation
Other Services Provided: None
Contact Information: 740-753-2106
Hours: Dependent on school hours
Service Area: Ohio
Eligibility Requirements: Only available for students and faculty
Web-site: <http://www.nelsonvilleyork.k12.oh.us/>

34. Agency Name: Ohio Health Hospitals (Athens County)
Transportation Service Type: Purchases services from providers
Other Services Provided: None
Contact Information: 740-593-1611
Hours: Dependent on day and time of services needed
Service Area: Ohio
Eligibility Requirements: None, open to the public
Web-site: www.ohiohealth.com

35. Agency Name: Ohio University
Transportation Service Type: Fixed-route, door-to-door, rental, and purchasing transportation from another provider
Other Services Provided: None
Contact Information: 740-593-1611
Hours: Dependent on service and events
Service Area: Athens City
Eligibility Requirements: Only available for students, faculty, and staff
Web-site: www.ohio.edu/transportation

36. Agency Name: Passion Works/Creative Foundations
Transportation Service Type: Door-to-door
Other Services Provided: None
Contact Information: 740-592-3673
Hours: Monday-Friday 9am-5pm
Service Area: Athens City
Eligibility Requirements: Only available for program clients
Web-site: www.passionworks.org

37. Agency Name: PersonnelPlus (Athens County Board of Developmental Disabilities)

Transportation Service Type: Purchases transportation from other providers

Other Services Provided: None

Contact Information: 740-592-3416

Hours: Monday-Friday 8am-4pm

Service Area: Athens County

Eligibility Requirements: Only available for program clients

Web-site: www.athenscbdd.org/services-for-adults/personnelplus/

38. Agency Name: Residential Home for the Developmentally Disable, Inc. (RHDD)

Transportation Service Type: Door-to-door

Other Services Provided: None

Contact Information: 740-452-5133

Hours: Based on appointments

Service Area: Ohio

Eligibility Requirements: Only available for agency clients

Web-site: www.hassemanmarketing.wixsite.com/rhdd

39. Agency Name: RSVP (Retired Seniors Volunteer Program) Transportation Program (Corporation for Ohio Appalachian Development)

Transportation Service Type: Volunteer driver service

Other Services Provided: None

Contact Information: 740-594-8499

Hours: Based on appointments

Service Area: Ohio

Eligibility Requirements: Must qualify with Athens County Job and Family Services

Web-site: www.coadinc.org/senior-programs/retired-senior-volunteer

40. Agency Name: Tabs Taxi
Transportation Service Type: Taxi service
Other Services Provided: None
Contact Information: 740-594-8294
Hours: 24/7
Service Area: Athens County
Eligibility Requirements: None, open to the public
Web-site: N/A

41. Agency Name: Salvation Army of Athens and Meigs Counties
Transportation Service Type: Provides vouchers, referrals, and transportation assistance
Other Services Provided: None
Contact Information: 740-797-1305
Hours: 24 hours
Service Area: Athens and Meigs Counties
Eligibility Requirements: Must meet eligibility requirements
Web-site: www.salvationarmyusa.org/usn/

42. Agency Name: The Sech-Kar Company
Transportation Service Type: Non-Medical Transportation and door-to-door service
Other Services Provided: None
Contact Information: 740-753-9993
Hours: Monday –Friday 6:30am-4:00pm
Service Area: Athens County
Eligibility Requirements: Only available to agency clients
Web-site: www.sechkar.com/index.html

43. Agency Name: The Summit at Coates Run Apartments
Transportation Service Type: Purchases transportation for other providers
Other Services Provided: None
Contact Information: 740-594-3030
Hours: Monday-Thursday 7:00am-9:30pm, Friday 7:00am-2:30am, Saturday 9:30pm-2:30am
Service Area: Athens City
Eligibility Requirements: None, open to the public
Web-site: www.summitatcoatesrun.com

44. Agency Name: Trimble School District
Transportation Service Type: Fixed-route student transportation
Other Services Provided: None
Contact Information: 740-767-2525
Hours: Dependent on school hours
Service Area: Ohio
Eligibility Requirements: Only available for students
Web-site: <http://www.trimble.k12.oh.us/>

45. Agency Name: United Seniors
Transportation Service Type: Curb-to-Curb
Other Services Provided: None
Contact Information: 740-594-3535
Hours: Monday – Friday 8am-4pm
Service Area: Athens County
Eligibility Requirements: Must be 60+ and pass an assessment
Web-site: www.seorf.ohiou.edu/~usac

46. Agency Name: University Commons

Transportation Service Type: Fixed-route student transportation

Other Services Provided: None

Contact Information: 740-593-7571

Hours: Dependent on Ohio University schedules

Service Area: Athens City

Eligibility Requirements: Only available for students

Web-site: <http://www.oucommons.com/>

47. Agency Name: University Courtyard Apartments

Transportation Service Type: Purchases services from other providers

Other Services Provided: None

Contact Information: 740-249-2485

Hours: Monday – Wednesday 7:00am-10:30pm, Thursday-Friday 7:00am-3:30am, Saturday 10:30pm-3:30am

Service Area: Athens City

Eligibility Requirements: Only available for Courtyard residents

Web-site: <http://www.ucourtyardathens.com/>

The table below provides a summary of the characteristics of the participating transportation providers and organizations that purchase transportation on behalf of consumers.

The table below provides a summary of the characteristics of the participating transportation providers and organizations that purchase transportation on behalf of consumers.

Table 1: Organizational Characteristics

Agency Name	Directly Operates Transportation (Yes/No)	Purchases Transportation from Another Agency (if Yes, Who?)	Legal Authority (Private Non-Profit, Private For-Profit, Public Non-Profit,)	Number of Annual One-Way Passenger Trips	Average Number Trip Denials per Week	Are Vehicles Only Available for Human Service Agency Clients (Y/N)*
1. Alexander School District	Yes	No	Government Entity	X	X	Yes
2. Area Agency on Aging	No	Yes, AODT, Daybreak, GreenCab	Public Non-Profit	X	X	N/A
3. Athens Airport Express	Yes	No	Private For-Profit	X	X	No
4. Athens City County Health Department	No	No	Public Non-Profit	X	X	N/A
5. Athens City School	Yes	No	Government Entity	X	X	Yes
6. Athens County Board of Developmental Disabilities	Yes	Yes, Athens on Demand Transit	Government Entity	X	X	Yes
7. Athens County Children Services	Yes	No	Government Entity	2016: 1597	X	Yes
8. Athens County Department of Job and Family Services	Yes	Yes, RSVP, AODT, Green Cab, Day Break, Fast Time	Government Entity	X	X	Yes

9. Athens County Head Start (HAPCAP)	Yes	No	Public Non-Profit	2016: 10,922	X	Yes
10. Athens County Re-Entry (ACDJFS)	No	Yes, Athens Public Transit	Government Entity	X	X	Yes
11. Athens Go-To Cab	Yes	No	Private For-Profit	X	X	No
12. Athens Mobility Management (HAPCAP)	No	No	Public Non-Profit	X	X	No
13. Athens On-Demand Transit (HAPCAP)	Yes	No	Public Non-Profit	2016: 8,931 2017: 9,765	X	No
14. Athens Public Transit (HAPCAP)	Yes	No	Public Non-Profit	2016: 325,175 2017: 436,109	X	No
15. Athens Veterans Association	Yes	No	Government Entity	~40/month	X	Yes
16. Athens Veterans Services	No	Yes	Government Entity	X	X	Yes
17. Athens Village	No	Yes, United Seniors of Athens	Private Non-Profit	X	X	N/A
18. Buckeye Hills Regional Council	No	No	Public Non-Profit	X	X	N/A
19. Daybreak Transportation Services LLC	Yes	No	Private For-Profit	XX	X	No
20. Echoing Connections	Yes	No	Public Non-Profit	~2300 / yearly	X	Yes
21. Federal Hocking School District	Yes	No	Government Entity	X	X	Yes
22. GoBus (HAPCAP)	Yes	No	Public Non-Profit	2017: 110,033 ~12,000/month	X	No

23. Good Works	No	Yes, Athens Public Transit and Green Cab	Public Non-Profit	X	X	Yes
24. Green Cab	Yes	No	Private For-Profit	X	X	No
25. HAVAR	Yes	No	Public Non-Profit	X	X	Yes
26. Haughland School	Yes	No	Private For-Profit	X	X	Yes
27. Hocking College	Yes	No	Public For-Profit	X	X	Yes
28. Holzer Hospital (Athens County)	No	No	Public For-Profit	X	X	N/A
29. Hopewell Health Centers	Yes	No	Public For-Profit	X	X	Yes
30. Integrated Services	Yes	No	Public Non-Profit	X	X	Yes
31. Lyft	Yes	No	Private For-Profit	X	X	No
32. My Sister's Place	No	Yes, Athens Public Transit, Green Cab	Public Non-Profit	X	X	Yes
33. Nelsonville-York School District	Yes	No	Government Entity	X	X	Yes
34. Ohio Health	No	Yes, Athens Public Transit, Green Cab	Public For-Profit	X	X	N/A
35. Ohio University	Yes	Yes, Athens Public Transit	Public For-Profit	100,000+ yearly	X	Yes
36. Passion Works (Creative Foundations)	Yes	No	Public Non-Profit	X	X	Yes
37. Personnel Plus (ACBDD)	No	No	Public Non-Profit	X	X	Yes
38. RHDD	Yes	No	Public Non-Profit	X	X	Yes
39. RSVP (COAD)	Yes	No	Public Non-Profit	X	X	Yes

40. Tabs Taxi	Yes	No	Private For-Profit	X	X	No
41. Salvation Army	Yes	No	Public Non-Profit	X	X	Yes
42. The Sech-Kar Company	Yes	No	Public Non-Profit	X	X	Yes
43. The Summit Apartments	No	Yes, Athens Public Transit	Private For-Profit	200,000+ yearly	X	No
44. Trimble School District	Yes	No	Government Entity	X	X	Yes
45. United Seniors	Yes	No	Public Non-Profit	2016: 1800	X	Yes
46. University Commons	Yes	No	Private For-Profit	X	X	N/A
47. University Courtyard Apartments	No	Yes, Athens Public Transit	Private For-Profit	10,000+ monthly	X	Yes

* Answering “Yes” indicates that your agency is closed door. Your agency is considered closed door if you ONLY provide transportation to your facility as a courtesy or if you ONLY serve a particular clientele that are enrolled in your agency programs (i.e. members of a sheltered workshop, or residents in a nursing home). Answering “No” indicates that your agency is open door. This means the service is open to the public or a segment of the general public defined by age, disability, or low income. For example, if an agency provides general transportation for anyone in the community who is over the age of 60, they are considered “open door”. For example, an individual who is 60 or over can request transportation to a doctor’s appointment or the grocery store regardless of their affiliation with your agency.

The participating organizations provide a wide range of transportation including fixed route, ADA Paratransit, Demand Response, On-Demand, and Human Service Agency Fixed Routes. 13 of the participating organizations provide services on weekdays. 5 operate transportation on Saturdays and 3 on Sundays. Evening services after 5pm are operated by 7 organizations. The following table depicts the transportation service characteristics by agency.

Table 2: Transportation Service Characteristics

Agency Name	Mode of Service	Days & Hours of Operation	Provides Medicaid-Eligible Trips (Y/N)	Level of Passenger Assistance Provided	Training Courses Required for Drivers
1. Alexander School District	Fixed-Route *Students Only*	M-F Hours dependent on school hours	No	Boarding, departing, wheelchair assistance (2 trained aids)	CPR, First-Aid, Blood Borne Pathogens training
2. Area on Aging	Referral and contract services	Dependent on appointment	Yes	Dependent of provider used	Dependent of provider used
3. Athens Airport Express	Inter-City	7 Days a Week	No	Boarding, departing, wheelchair assistance	Vehicle operations, customer service / ADA requirements, safety
4. Athens City County Health Department	Referral and voucher services	N/A	No	N/A	N/A
5. Athens City School District	Fixed-Route *Students Only*	M-F Hours dependent on school hours	No	Boarding, departing, wheelchair assistance	CPR and First-Aid
6. Athens County Board of Developmental Disabilities (ACBDD)	On-Demand *Clients only*	M-F 6:00am-4:30pm	Yes	Boarding, Departing, Wheelchair assistance	ODE, Wheelchair, car seats, safety vests, CPR
7. Athens County Children Services	On-Demand *Clients Only*	Varies	Yes	Boarding, Departing for children	Car seat installation and driver safety
8. Athens County Department of Job and Family Services	On-Demand *Clients Only*	M-F 8am-4pm	Yes	Boarding, Departing	Vehicle operations, customer service / ADA requirements, safety

9. Athens County Head Start (HAPCAP)	Fixed-Route *Students Only*	M-F	No	Boarding, departing, wheelchair assistance, seat belt assistance	CDL and required training annually
10. Athens County Re-Entry (ACDJFS)	Referral services	N/A	N/A	N/A	N/A
11. Athens Go-To Cab	Taxi Service	24/7	X	X	X
12. Athens Mobility Management (HAPCAP)	Referral and training service	M-F 8am-4pm	No	N/A	N/A
13. Athens On-Demand Transit (HAPCAP)	On-Demand	M-F 8am-7:30pm	Yes	Boarding, departing, wheelchair assistance	Vehicle operations, customer service / ADA requirements, safety
14. Athens Public Transit (HAPCAP)	Fixed-Route	M-F 7am-10pm Saturday 8:45am-10pm	No	Boarding, departing, wheelchair assistance	Vehicle operations, customer service / ADA requirements, safety
15. Athens Veterans Association	On-Demand *Veterans Only*	Varies	No	No	Vehicle operations, safety training, DMV record checks
16. Athens Veterans Services	Referral and qualification service	M-F 8am-4pm	N/A	N/A	N/A
17. Athens Village	Referral and contract services	Dependent on provider	No	N/A	N/A
18. Buckeye Hills Regional Council	Referral services	Dependent on provider	Yes	N/A	N/A
19. Daybreak Transportation Services LLC	On-Demand	XX	Yes	XX	XX

20. Echoing Connections	On-Demand *Clients Only*	M-F 7:45am- 3:15pm	Yes	Boarding, departing, wheelchair assistance	Vehicle operations, customer service / ADA requirements, safety
21. Federal-Hocking School District	Fixed-Route *Students Only*	Dependent on school	No	No	CPR, First-Aid
22. GoBus (HAPCAP)	Inter-City Bus	7 Days a Week	No	Boarding, departing, wheelchair assistance	Vehicle operations, customer service / ADA requirements, Safety
23. Good Works	Referral Services	24/7	N/A	N/A	N/A
24. Green Cab	Taxi Service	24/7	Yes	X	X
25. Haughland School	Fixed Route *Students Only*	Dependent on School	No	X	X
26. HAVAR	On-Demand *Clients only*	M-F 7:30am- 7:30pm	Yes	Boarding, departing, wheelchair assistance	Vehicle operations, customer service / ADA requirements, safety
27. Hocking College	On-Demand *Students Only*	Dependent on need /events	No	X	No
28. Holzer Hospitals (Athens County)	Referral Services	24/7	Yes	N/A	N/A
29. Hopewell Health Centers (Athens County)	On-Demand *Clients Only*	Dependent on need	Yes	X	X
30. Integrated Services	On-Demand *Clients Only*	M-F 9am-5pm	Yes	X	X
31. Lyft	TNC Provider	24/7	Yes	X	X
32. My Sister's Place	Referral Services	24/7	N/A	N/A	N/A
33. Nelsonville-York School District	Fixed Route *Students Only*	Dependent on school	No	Boarding, departing, wheelchair assistance	CPR, First-Aid
34. Ohio Health (Athens County)	Referral Services	24/7	N/A	N/A	N/A

35. Ohio University Campus Area Transit Service (CATS)	Fixed-Route	M-F 7am-3am *University Schedule*	No	Boarding, departing, wheelchair assistance	Vehicle operations, customer service / ADA requirements, safety
35-a. Ohio University Rental Fleet	Rental Service *OU Only*	M-F 7:30am-4:30pm	No	N/A – Rental Service	N/A – Rental Service
35-b. Ohio University Transit	Fixed-rom Paratransit *OU only*	M-F 7:30am-5:30pm	No	Boarding, departing, wheelchair assistance	Vehicle operations, customer service / ADA requirements, safety
36. Passion Works/Creative Foundations	On-Demand *Clients only*	M-F 9am-5pm	No	Boarding, departing, wheelchair assistance	Vehicle operations, customer service / ADA requirements, safety
37. Personnel Plus (ACBDD)	Referral services	M-F 8am-4pm	Yes	N/A	N/A
38. RHDD	H/PC, NMT, Medical, As-Needed	24/7	Yes	Boarding, departing, wheelchair assistance	Sur Loc and internal driver safety training
39. Salvation Army	Volunteer Service	Dependent on appointments	No	X	X
40. RSVP (COAD)	Volunteer Ride-Share Service	Scheduled based on Appts	Yes	Boarding, departing	Vehicle operations, customer service, safety
41. Tab's Taxi	Taxi Service	24/7	No	X	X
42. The Sech-Kar Company	On-Demand *Clients only*	M-F 6:30am-4pm	Yes	Boarding, departing, wheelchair assistance	Vehicle operations, customer service / ADA requirements, safety
43. The Summit at Coates Run Apartments	Fixed-Route	M-Th 7a-9:30p Fri 7a-2:30am Sat 10:30p-3:30a	No	Boarding, departing, wheelchair assistance	Vehicle operations, customer service / ADA requirements, safety

44. Trimble School District	Fixed-Route *Students Only*	Dependent on school	No	Boarding, departing, wheelchair assistance	CPR and first aid
45. United Seniors	On-Demand *Seniors only*	M-F 8am-4pm	No	Boarding, departing, wheelchair assistance	Vehicle operations, customer service / ADA requirements, safety
46. University Commons	Fixed-Route *Students Only*	*University Schedule*	No	Boarding, departing	X
47. University Courtyard Apartments	Fixed-Route *Residents Only*	M-W 7a-10:30p Th-F 7am-3:30a Sat 10:30p – 3:30a	No	Boarding, departing, wheelchair assistance	Vehicle operations, customer service / ADA requirements, safety

Transportation-related expenses and revenues also differ by organization. Federal and local funding are common revenue sources for transportation operators in Athens County. The table below provides a summary of expenses and revenues for public and non-profit transportation programs.

Table 3: Transportation-Related Expenses and Revenues

Agency Name	Fare Structure	Donations Accepted (Y/N)	Number of Full-Time & Part-Time Drivers	Number of Full-Time & Part-Time Schedulers/ Dispatchers	Revenue Sources (most recent Fiscal Year)	Total Annual Transportation Expenses
1. Alexander School District	Free for students	N	28FT	1FT	X	X
2. Area on Aging	Free for qualifying clients	N	X	X	X	X
3. Athens Airport Express	\$149/one-person \$24 per additional person + tax	N	X	X	X	X
4. Athens City County Health Department	N/A	N	X	X	X	X
5. Athens City School District	Free for students	N	22FT, 2PT	1FT	X	X
6. Athens County Board of Developmental Disabilities (ACBDD)	Free for qualifying clients and students	N	9	2	ODE, Levy and Fed. Gov.	X
7. Athens County Children Services	Free for qualifying clients	N	2FT	0	X	X

8. Athens County Department of Job and Family Services	Free for qualifying clients	N	4FT	0	X	X
9. Athens County Head Start (HAPCAP)	Free for students	N	8PT	0	X	X
10. Athens County Re-Entry (ACDJFS)	N/A	N/A	N/A	N/A	Food Assistance Funds (FAET)	\$~14,000
11. Athens Go-To Cab	Varies by distance	N	X	X	X	X
12. Athens Mobility Management (HAPCAP)	N/A	N/A	N/A	N/A	N/A	N/A
13. Athens On-Demand Transit (HAPCAP)	\$2.00 one-way	N	9PT	1PT	ACDJFS Contract Revenue, ODOT 5310 Operations, ODDC	\$228,884.29
14. Athens Public Transit (HAPCAP)	\$1.00 one-way Discounted Fares Free for OU	N	15FT, 6PT	1FT	5311, State of Ohio general funds, OEDFAP, ACJFS, City of Athens tax matching funds, other contract revenue	\$1,323,000
15. Athens Veterans Association	Free for qualifying veterans	N	12FT	0	X	X
16. Athens Veterans Services	Referral services	N/A	N/A	N/A	N/A	N/A
17. Athens Village	Funded by membership dues	N	X	X	X	X
18. Buckeye Hills Regional Council	N/A	N	X	X	X	X

19. Daybreak Transportation Services LLC	XX	XX	XX	XX	XX	XX
20. Echoing Connections	Free for qualifying clients	N	All Staff	1FT	X	X
21. Federal Hocking School District	Free for students	N	17FT, 2PT	1FT	X	X
22. GoBus (HAPCAP)	Varies by distance	N	15FT, 16PT	4FT, 2PT	5311, in-kind match	\$6,940,129
23. Good Works	Referral services	N/A	N/A	N/A	N/A	N/A
24. Green Cab	Varies by distance and times	N	X	X	X	X
25. Haughland School	Free for students and staff	N	X	X	X	X
26. HAVAR	Free for qualifying clients	N	4PT	X	X	X
27. Hocking College	Free for students and staff	N	2PT	0	X	X
28. Holzer Hospitals (Athens County)	Referral Services	N	0	0	Private For-Profit	X
29. Hopewell Hospitals (Athens County)	Free for qualifying clients	N	X	X	X	X

30. Integrated Services	Free for qualifying clients	N	1PT	X	X	X
31. Lyft	\$0.86/mile +\$1.00 booking	N	X	X	Private For-Profit	X
32. My Sister's Place	Referral for services	N/A	N/A	N/A	N/A	N/A
33. Nelsonville-York School District	Free for students	N	12FT, 2PT	1FT	X	X
34. Ohio Health Hospitals (Athens County)	Referral services	N	0	0	Public For-Profit Institute	X
35-a. Ohio University Rental Fleet	Varies	N	N/A Rental Fleet	1FT	Public For-Profit Institute	X
35-b. Ohio University Transit	Varies	N	6FT, 56PT	2FT	Public For-Profit Institute	X
36. Passion Works/Creative Foundations	Free for clients	N	2PT	0	X	X
37. Personnel Plus/ACBDD	Referral services	X	X	X	X	N/A
38. RHDD	X	N	2FT, 2PT	1FT Driver is the dispatcher	DODD and ACBDD	\$35,000
39. RSVP/COAD	Free for qualifying clients	N	N/A	N/A	Athens County Job and Family Services	X
40. Tab's Taxi	Varies by distance and times	N	X	X	Private For-Profit	X

41. Salvation Army	Free for qualifying clients	Y	X	X	X	X
42. The Sech-Kar Company	Free for qualifying clients	N	4PT	X	ACBDD	X
43. The Summit at Coates Run Apartments	Free for residents / \$1.00 for non-residents	N	Athens Public Transit Operates	Athens Public Transit Operates	Apartments and Fees	~\$150,000 - \$200,000
44. Trimble School District	Free for students	N	12FT, 2 Subs	1FT	X	X
45. United Seniors	Free for qualified clients	Y	4PT	0	Athens County Senior Services Levy, Older American Act – Title B3, Buckeye Hills, donations	X
46. University Commons	Free for students	N	4FT	0	Apartments and Fees	X
47. University Courtyard Apartments	Free for residents	N	Athens Public Transit operates	Athens Public Transit Operates	Apartments and Fees	X

The following table provides basic information about transportation options other than the traditional public and human services transportation. Transportation options might include bike share, ride share, intercity, or taxi services, and more.

Table 4: Alternative/ Active Transportation Options

Transportation Option	Availability	Cost	Usage	Service Area
3. Athens Airport Express	24/7	Varies by distance	Any community member	State of Ohio
Athens Go-To Cab	24/7	Varies by distance	Taxi service	State of Ohio
Book-A-Bike	Varies by Library locations	Free	Any community member max 3 Hours	Athens County
Church Transportation	Sundays	Free to parishioners	Any community member	Athens County
EV Chargers	24/7	Free	Any community member	Athens County
22. GoBus/HAPCAP	7 Days a Week	Varies by distance	Inter-City Bus System	State of Ohio
24. Green Cab	24 / 7	Varies by distance	Taxi service	State of Ohio
Hockhocking Adena Bikeway	24/7	Free	Any community member	Athens County
31. Lyft	24/7	Varies by distance	E-Hail service	State of Ohio
35-a. OU Airport Express	24/7	Varies by distance	Rental service	State of Ohio
Park & Go	24/7	Free	Any community member	Athens County
39. RSVP/COAD	Scheduled	Medicaid Covered	Volunteer-Senior Ride Share Program	Ohio
40. Tabs Taxi	24/7	Varies by distance	Taxi service	State of Ohio
Tomcat Trail	24/7	Free	Trail system	Trimble, Ohio
Zip Car	24/7	Varies	OU students	State of Ohio

The following table provides basic information about local travel training program options.

Table 5: Transportation Resources

Transportation Resource	Availability	Cost	Usage	Service Area
12. Athens Mobility	7 Day a Week	Free	Community Members	The State of Ohio

The following table illustrates the technology used by each transportation provider for scheduling, dispatching, and/or GPS tracking vehicles. Several transportation providers don't currently utilize scheduling or dispatching software, apps, or GPS systems.

Table 6: Technology

Agency Name	Name of Scheduling Software	Do you have an App for Transportation (Y/N)?	Name of Dispatching Software	AVL System/ GPS (Y/N)
1. Alexander School District	FMX – for field trips	No	X	N
2. Area on Aging	X	X	X	X
3. Athens Airport Express	X	X	X	X
4. Athens City County Health Department	N/A	N/A	N/A	N/A
5. Athens City School District	Versatrans	No	X	Y
6. Athens County Board of Developmental Disabilities (ACBDD)	X	N	X	N
7. Athens County Children Services	X	X	X	X

8. Athens County Department of Job and Family Services	X	N	X	N
9. Athens County Head Start/HAPCAP	X	N	X	N
10. Athens County Re-Entry/ACDJFS	N/A	N/A	N/A	N/A
11. Athens Go-To Cab	X	X	X	X
12. Athens Mobility Management Program/HAPCAP	N/A	N/A	N/A	N/A
13. Athens On-Demand Transit/HAPCAP	PC Trans	N	PC Trans	N
14. Athens Public Transit/HAPCAP	X	Yes, DoubleMap	X	N
15. Athens Veterans Services	N/A	N/A	N/A	N/A
16. Athens Veterans' Association	X	N	X	N
17. Athens Village	N/A	N/A	N/A	N/A
18. Buckeye Hills Regional Council	N/A	N/A	N/A	N/A
19. Daybreak Transportation Services LLC	X	X	X	X
20. Echoing Connections	X	N	X	N
21. Federal Hocking School District	X	No	X	Yes
22. GoBus/HAPCAP	X	N	X	N
23. Good Works	N/A	N/A	N/A	N/A
24. Green Cab	X	X	X	X

25. Haughland School	X	X	X	X
26. HAVAR	X	N	X	N
27. Hocking College	X	N	X	N
28. Holzer Hospitals (Athens County)	N/A	N/A	N/A	N/A
29. Hopewell Hospitals (Athens County)	X	X	X	X
30. Integrated Services	X	X	X	X
31. Lyft	E-Hail Software	Yes	X	Yes
32. My Sister's Place	N/A	N/A	N/A	N/A
33. Nelsonville-York School District	No	No	X	Yes
34. Ohio Health (Athens County)	N/A	N/A	N/A	N/A
35-a. Ohio University Rental Fleet	Fleet Commander	No	X	N
35-b. Ohio University Transit	X	Yes, DoubleMap	X	N
36. Passion Works (Creative Foundations)	N/A	No	N/A	Yes
37. Personnel Plus (ACBDD)	N/A	N/A	N/A	N/A
38. RHDD	X	N	X	N
39. RSVP (COAD)	X	N	X	N
40. Tab's Taxi	X	X	X	X
41. Salvation Army	X	X	X	X
42. The Sech-Car Company	X	N	X	N
43. The Summit at Coates Run Apartments	X	Yes, DoubleMap	X	N

44. Trimble School District	No	No	X	Yes
45. United Seniors	X	N	X	N
46. University Commons	X	N	X	N
47. University Courtyard Apartments	X	Yes, DoubleMap	X	N

Assessment of Community Support for Transit

Lack of transportation has been, and continues to be, a very significant problem for people living in poverty, particularly for people in rural areas such as Athens County where there are limited public transportation options. Athens County has long recognized the need for transportation services in the region and has a long history of overall support for transportation initiatives.

Recognizing the need for the growth of transportation in the community Athens County partnered with Hocking Athens Perry Community Action (HAPCAP) and the Ohio Department of Transportation (ODOT) to facilitate the Athens Mobility Management (AMM) project in January of 2010. AMM is a position dedicated to:

- Increasing understanding and awareness of community transportation needs
- Increasing awareness of current community transportation options and programs
- Ensuring that transportation consideration are included in local and regional planning activities
- Increasing local capacity for transportation services
- Assisting individuals with accessing all community transportation options

With the support of the County, Athens City, Athens County Department of Job and Family Services, Athens County Children Services, and Athens County Board of Developmental Disabilities HAPCAP began to manage the project and set forth in motion a plan to achieve the goals of the project in Athens County.

As HAPCAP and the AMM garnished support and formed partnerships with stakeholders the City of Athens was granted the opportunity to create and host a non-profit inter-city bus system dedicated to connecting rural communities to cities and other parts of the state at affordable rates. The City of Athens chose HAPCAP to manage the project and in the fall of 2010 GoBus was launched allowing community members to ride to Columbus or Cincinnati, with stops along the way, for \$10.00 or less. As the popularity of the GoBus grew, HAPCAP and the AMM continued to conduct outreach, travel training, and transportation meetings in the community. Soon after Ohio University formed a partnership with HAPCAP and the GoBus to allow a stop at the Baker Student Center in the heart of the City of Athens for students and community members to use. In 2015 with the success of the GoBus becoming widespread several more routes were added to Cleveland, Wooster, and Van Wert. Since its inception GoBus ridership has increased exponentially and continues to rise with a current state-wide needs study being conducted in partnership with the ODOT.

With the success of the GoBus program continuing to rise the City of Athens began to look at their own Athens Public Transit (APT) fixed-route system which was operating poorly with little support or outreach. The City of Athens decided that it was time for a complete overhaul of their current fixed-route system and released a Request for a Proposal for a new management organization to run APT. In 2012 the City of Athens chose HAPCAP and later that year the completely renovated APT system was revealed. Since its start in 2012 APT has expanded to serve The Plains and Chauncey, lengthened hours, provided services to apartment complexes in the area, and partnered with Ohio University to create the Bobcat Pass, allowing all students, faculty, and staff to ride for free.

That same year the AMM, HAPCAP, and several partnering organizations created a pilot project consisting of a fleet of accessible vans that can travel door-to-door and county-wide at an affordable

price. This pilot project was created to better serve seniors, individuals with disabilities, and low-income individuals. In the fall of 2012 Athens On-Demand Transit (AODT) began to serve the entirety of the County offering \$2.00 one-way rides anywhere in the County. The need for such a service was quickly proven as AODT has continuously expanded their capacity to accommodate the amount of community members in need of such a service. AODT partners with Athens County Job and Family services to provide rides to wheel chair bound community members and works often with local hospitals and medical facilities.

As transportation options in Athens County continued to grow the opportunities for coordinated transportation efforts followed suit. The Athens Mobility Management Program serves as the coordinating force for organizations and individuals. Financial and managerial support for the program has been and currently is provided by the Ohio Department of Transportation, Athens County, Athens City, Athens County Board of Developmental Disabilities, Athens County Children Services, Hocking Athens Perry Community Action, and Athens County Job and Family Services. AMM continues to support transportation and active transportation efforts, conduct outreach and training to individuals and organizations, and advocating for transportation at local meetings, including:

- ATCO Transition Meeting
- Athens Area Stand Down Planning Committee
- Athens City Disabilities Committee
- Athens County Complete Streets Formation Committee
- Athens County Coordinated Plan Planning Committee (hosted by the Mobility Manager)
- Athens County Council on Aging
- Athens County Transportation Meetings (hosted by the Mobility Manager)
- Athens Re-Entry Task Force
- Athens Regional Planning Committee
- Athens-Belpre Rail Trail
- Buckeye Hills Transportation Development Committee
- City of Athens Transportation Task Force
- Ohio Action Institute (Member of Athens Area team)
- Ohio Department of Transportation Mobility Managers meeting
- Ohio Public Transportation Association Conferences
- Ohio University Transportation
- Senior Safety Day Planning Committee

Partnerships and support for Active Transportation continue to grow. In 2017 Athens was granted the opportunity to attend the Ohio Action Institute with a team of local leaders. The Athens Active Transportation Team includes members from the City of Athens Council, the Athens County City Health Department, Ohio University, Buckeye Hills Regional Planning Council, HAPCAP (The Athens Mobility Manager), and the Athens County Planner.

With a long history of collective understanding for the need for transportation services in Athens County and the partnerships that have been formed throughout the years, transportation initiatives continue to see wide-spread positive support. As national, state, and local transportation evolves into regional and technology based efforts Athens County strives to be a leader with these changes as the strong foundation that has been formed throughout time continues to support Athens County moving forward.

Safety

All transportation providers in Athens County are dedicated to ensuring safe transportation for all riders, drivers, and pedestrians. Although different providers require different safety courses for their drivers there are requirements for each provider to ensure safe practices.

Several transportation providers listed in this plan are part of the County-wide Emergency Response Plan.

Vehicles

Survey/interview participants listed a combined total of 238 vehicles. Approximately 31% of the vehicles are wheelchair accessible. A vehicle utilization table is provided at the end of this chapter (Table 6). Several transportation providers did not provide information for the Vehicle Utilization Form but did provide information regarding the number of vehicles and wheel chair accessible vehicles in their fleets. Those numbers are reflected in the total amount of vehicles listed above and in the remainder of this document.

Provider	Vehicles	Wheel Chair
Alexander School District	37	3
Athens City School District	36	3
Athens County Board of Developmental Disabilities	28	23
Athens County Head Start	6	6
Athens Veterans Association	7	0
Echoing Connections	4	4
Federal-Hocking School District	27	2
HAVAR	2	1
Hocking College	85	1
Integrated Services	1	0
Nelsonville-York School District	25	2
Passion Works / Creative Foundations	2	2
The Sech-Kar Company	4	3
Trimble School District	17	1
University Commons Apartments	2	0
Total	142	38

All of the transportation providers provide at least 1 wheelchair accessible vehicle, while some organizations have an entire fleet of wheelchair accessible vehicles. Currently, wheelchair accessible vehicles available to the public are only available during certain hours and days. The need for these vehicles remains high as several providers are running at full capacity and denying ride requests. Numerous organizations purchase services from providers to provide wheelchair accessible transportation to their clients as a contract service.

As vehicles age, they require additional maintenance, may break down more often, and become costlier to operate. Vehicle replacement, based on age and condition, is vital to the overall cost effectiveness of the transportation services provided.

Vehicle Utilization Table

Veh #	Make	Model	Year	Vin #	Capacity	WC Capacity	Days of the Week Vehicle is in Service	Service Hours	Vehicle Condition	Program to which Vehicle is Assigned (if applicable)	Service Area
Athens County Job and Family Services											
850YZK	GMC	Savana	2017	1GJZ7NFFXH1206596	15	No	Monday-Friday	8	Great	Transportation	Athens County
515YZG	Honda	CRV	2017	5J6RW2H88HL017421	5	No	Monday-Friday	8	Great	Transportation	Athens County
620YWM	Dodge	Caravan	2016	2C4RDGCG0GR331560	7	No	Monday-Friday	8	Great	Transportation	Athens County
762YPP	Chevrolet	Impala	2014	2G1WA5E30E1138228	5	No	Monday-Friday	8	Great	Transportation	Athens County
529YDZ	Dodge	Caravan	2010	2D4RN4DE4AR282109	7	No	Monday-Friday	8	Great	Transportation	Athens County
OF864	Dodge	Ram 2500	2008	3D7KS26DX8G244759	3	No	Monday-Friday	8	Fair	Transportation	Athens County
Athens County Children Services											
OF6939	Chevy	Impala	2008	261WB58K281213659	5	No	5	8	Fair	Transportation	Athens County
GJE1694	Dodge	Caravan	2009	2D8HN4E69R94036	7	No	5	8	Good	Transportation	Athens County
737YMZ	Ford	E350 Van	2010	1FNBE3812ADA45603	12	No	5	8	Good	Transportation	Athens County
769YFZ	Dodge	Ram 2500	2011	3D7LT2ET1GB551514	3	No	5	8	Good	Maintenance	Athens County
782YPP	Chevy	Traverse	2013	1GNKVFED8EJ181690	8	No	5	8	Good	Transportation	Athens County
786YPP	Chevy	Traverse	2013	1GNKVFEDXEJ216357	8	No	5	8	Good	Transportation	Athens County
398YMF	Chevy	Cargo Van	2013	1GCZGTCGX1107666	2	No	5	8	Good	All	Athens County
Athens Public Transit											
221	Gillig	LF 30'	2002	M15GGE181221090518	53 (29/24)	2	Mon-Sat	X	Fair	Athens 5311	38 sq. miles
223	Gillig	LF 30'	2002	M15GGE181021090520	53 (29/24)	2	Mon-Sat	X	Fair	Athens 5311	38 sq. miles
9800	New Flyer	D35 LF	1998	5FYD2SL07WU018189	65 (35/30)	2	Mon-Sat	X	Fair	Athens 5311	38 sq. miles
1100	Ford	Goshen Coach GC II	2011	1FDFE4FS7BDA09927	24 (18/6)	2	Mon-Sat	X	Fair	Athens 5311	38 sq. miles
1300	Ford	Goshen Coach GC II	2013	1FDFE4FS2DDA20661	25 (18/7)	2	Mon-Sat	X	Good	Athens 5311	38 sq. miles
1400	Ford	Goshen Coach GC II	2014	1FDFE4FS4FDA10653	25 (18/7)	2	Mon-Sat	X	Good	Athens 5311	38 sq. miles

Veh #	Make	Model	Year	Vin #	Capacity	WC Capacity	Days of the Week Vehicle is in Service	Service Hours	Vehicle Condition	Program to which Vehicle is Assigned (if applicable)	Service Area
1401	Ford	Starcraft Allstar XL	2014	1FDGF5GY5FEA42547	40 (30/10)	2	Mon-Sat	X	Good	Athens 5311	38 sq. miles
1600	Ford	Champion LF	2016	1FDDE4FS5GDC25850	30 (22/8)	2	Mon-Sat	X	Excellent	Athens 5311	38 sq. miles
1601	Ford	Champion LF	2016	1FDDE4FS7GDC25851	30 (22/8)	2	Mon-Sat	X	Excellent	Athens 5311	38 sq. miles
1602	Ford	Champion LF	2016	1FDDE4FS8GDC54937	30 (22/8)	2	Mon-Sat	X	Excellent	Athens 5311	38 sq. miles
1700	Ford	Champion LF	2017	1FTYR2XM6HKA84547	9 (9/0)	2	Mon-Sat	X	New	Athens 5311	38 sq. miles
Athens On-Demand Transit											
101	Honda	Odyssey	2002	2HKRL18662H590644	6	0	Monday-Friday	26	Fair	AODT	Athens County
103	Dodge	Grand Caravan	2012	2C4RDGBG5CR398508	5	1	Monday-Friday	32	Fair	AODT	Athens County
104	Dodge	Grand Caravan	2013	2C4RDGBG6DR617493	5	1	Monday-Friday	32	Fair	AODT	Athens County
105	Dodge	Grand Caravan	2013	2C4RDGBG8DR617494	5	1	Monday-Friday	32	Good	AODT	Athens County
106	Dodge	Grand Caravan	2014	2C7WDGBG7ER380116	5	1	Monday-Friday	32	Good	AODT	Athens County
109	Dodge	Grand Caravan	2017	2C7WDGB0HR618327	5	1	Monday-Friday	32	Excellent	AODT	Athens County
Residential Home for the Developmentally Disabled (RHDD)											
109	Toyota	Corolla	2011	2T1BU4EE6BC590397	X	N	X	X	X	X	Athens County
4	Ford	E-450	2008	1FD4E45S78DA05491	X	Y	X	X	X	X	Athens County
115	Dodge	Grand Caravan	2014	2C4RDGCG8ER155342	X	Y	X	X	X	X	Athens County
119	Dodge	Caravan 9007	2015	2C4RDGBG2FR749007	X	N	X	X	X	X	Athens County
15	Ford	E350 Bus 8802	2016	1FDEE3FS6GDC18802	X	Y	X	X	X	X	Athens County
110	Dodge	Grand Caravan	2010	2D4RN4DE9AR497632	X	Y	X	X	X	X	Athens County
114	Toyota	Rav-4	2012	JTMBF4DVXC5055308	X	N	X	X	X	X	Athens County
124	Dodge	Grand Caravan	2015	2C4RDGBG7FR623256	X	Y	X	X	X	X	Athens County
17	Ford	Goshen Coach 17	2017	1FDEE3FS5HDC47886	X	Y	X	X	X	X	Athens County
Ohio University											

Veh #	Make	Model	Year	Vin #	Capacity	WC Capacity	Days of the Week Vehicle is in Service	Service Hours	Vehicle Condition	Program to which Vehicle is Assigned (if applicable)	Service Area
29106	MCI	J4500	2016	2MG3JM8AXGW067355	55	Y	Varies	Varies	Excellent	OU Transit	Varies
29109	VanHool	C2045E	2007	YE2CC17B472047263	55	Y	Varies	Varies	Good	OU Transit	Varies
29150	Ford	F650 Starcraft XLT	2017	1FDWFDXHD805419	30	Y	Varies	Varies	Excellent	OU Transit	Varies
29346	VanHool	C2045	2003	YE2CC12B132045892	55	Y	Varies	Varies	Good	OU Transit	Varies
29465	Ford	Cutaway E350 Super Duty	2012	1FDEE3FL2CDA13464	15	Y	Varies	Varies	Good	OU Transit	Varies
29466	Ford	Cutaway E350 Super Duty	2012	1FDEE3FL9CDA13462	15	Y	Varies	Varies	Good	OU Transit	Varies
29537	Ford	Starcraft E350	2016	1FDEE3FL2GDC16294	15	Y	Varies	Varies	Excellent	OU Transit	Varies
29538	Ford	Starcraft E350	2016	1FDEE3FL5GDC16287	15	Y	Varies	Varies	Excellent	OU Transit	Varies
29544	MV-1	DX ADA Van	2016	57WMD2C68GM100007	4	Y	5	M-F	Excellent	OU Transit	Campus 2 Miles
29518	MV-1	DX ADA Van	2014	57WMD1A66EM101389	4	Y	5	M-F	Good	OU Transit	Campus 2 Miles
S29893	Ford	E350 Starcraft Allstar	2017	1FDEE3FS1HDC34066	15	Y	Varies	Varies	Excellent	OU Transit	Varies
S29894	Ford	E350 Starcraft Allstar	2017	1FDEE3FS7HDC33634	15	Y	Varies	Varies	Excellent	OU Transit	Varies
29387	Ford	E350 Starcraft Cutaway	2014	1FDEE3FL0EDA68918	15	Y	Varies	Varies	Good	OU Transit	Varies
29416	Ford	F350 XL Super Duty	2008	1FBNE31L78DA99751	12	No	Varies	Varies	Good	OU Rental Fleet	Varies
29417	Ford	E350 XL Super Duty	2008	1FBNE31L98DA99752	12	No	Varies	Varies	Good	OU Rental Fleet	Varies
29420	Chevrolet	Impala LS	2008	2G1WB58KX81313931	5	No	Varies	Varies	Good	OU Rental Fleet	Varies
29444	Ford	Econoline E350 Super Duty	2010	1FBNE3BL7ADA54121	12	No	Varies	Varies	Good	OU Rental Fleet	Varies
29460	Chevrolet	Cruze LT	2012	1G1PC5SH3C7225927	5	No	Varies	Varies	Good	OU Rental Fleet	Varies

Veh #	Make	Model	Year	Vin #	Capacity	WC Capacity	Days of the Week Vehicle is in Service	Service Hours	Vehicle Condition	Program to which Vehicle is Assigned (if applicable)	Service Area
29461	Chevrolet	Cruze Lt	2012	1G1PC5SH8C7225907	5	No	Varies	Varies	Good	OU Rental Fleet	Varies
29462	Chevrolet	Cruze LT	2012	1G1PC5SH1C7226011	5	No	Varies	Varies	Good	OU Rental Fleet	Varies
29463	Chevrolet	Cruze LT	2012	1G1PC5SH7C7226773	5	No	Varies	Varies	Good	OU Rental Fleet	Varies
29468	Ford	Econoline E350 Super Duty	2012	1FBNE3BLXCDB17697	12	No	Varies	Varies	Good	OU Rental Fleet	Varies
29469	Ford	Econoline E350 Super Duty	2012	1FBNE3BL1CDB17698	12	No	Varies	Varies	Good	OU Rental Fleet	Varies
29470	Ford	Econoline E350 Super Duty	2012	1FBNE3BL3CDB17699	12	No	Varies	Varies	Good	OU Rental Fleet	Varies
29471	Ford	Econoline E350 Super Duty	2012	1FBNE3BL6CDB17700	12	No	Varies	Varies	Good	OU Rental Fleet	Varies
29472	Ford	Econoline E350 Super Duty	2012	1FBNE3BL8CDB17701	12	No	Varies	Varies	Good	OU Rental Fleet	Varies
29473	Ford	Econoline E350 Super Duty	2012	1FBNE3BLXCDB17702	12	No	Varies	Varies	Good	OU Rental Fleet	Varies
29476	Ford	Econoline E350 Super Duty	2012	1FBNE3BL5CDB17705	12	No	Varies	Varies	Good	OU Rental Fleet	Varies
29477	Ford	Econoline E350 Super Duty	2012	1FBNE3BL7CDB17706	12	No	Varies	Varies	Good	OU Rental Fleet	Varies
29479	Ford	Econoline E350 Super Duty	2012	1FBNE3BL0CDB17708	12	No	Varies	Varies	Good	OU Rental Fleet	Varies
29484	Chevrolet	G2500	2013	1GAWGPFA2D1145435	12	No	Varies	Varies	Good	OU Rental Fleet	Varies
29485	Chevrolet	G2500	2013	1GAWGPFA7D1145043	12	No	Varies	Varies	Good	OU Rental Fleet	Varies
29488	Ford	E-150 XL Wagon	2013	1FMNE1BW3DDB14874	8	No	Varies	Varies	Good	OU Rental Fleet	Varies
29491	Ford	E-150 XL Wagon	2013	1FMNE1BW1DDB14873	8	No	Varies	Varies	Good	OU Rental Fleet	Varies

Veh #	Make	Model	Year	Vin #	Capacity	WC Capacity	Days of the Week Vehicle is in Service	Service Hours	Vehicle Condition	Program to which Vehicle is Assigned (if applicable)	Service Area
29492	Ford	E-150 XL Wagon	2013	1FMNE1BWXDDB14872	8	No	Varies	Varies	Good	OU Rental Fleet	Varies
29499	Ford	Focus SE	2014	1FADP3F28EL133401	5	No	Varies	Varies	Good	OU Rental Fleet	Varies
29500	Ford	Focus SE	2014	1FADP3F2XEL133402	5	No	Varies	Varies	Good	OU Rental Fleet	Varies
29501	Ford	Focus SE	2014	1FADP3F26EL133400	5	No	Varies	Varies	Good	OU Rental Fleet	Varies
29502	Honda	Pilot LX	2014	5FNYP4H28EB011559	8	No	Varies	Varies	Good	OU Rental Fleet	Varies
29503	Honda	Insight LX	2013	JHMZE2H53DS005156	5	No	Varies	Varies	Good	OU Rental Fleet	Varies
29504	Honda	Insight LX	2013	JHMZE2H57DS004351	5	No	Varies	Varies	Good	OU Rental Fleet	Varies
29505	Honda	Odyssey LX	2014	5FNRL5H27EB048377	7	No	Varies	Varies	Good	OU Rental Fleet	Varies
29506	Honda	Odyssey LX	2014	5FNRL5H29EB002114	7	No	Varies	Varies	Good	OU Rental Fleet	Varies
29507	Honda	Pilot LX	2014	5FNYP4H29EB017354	8	No	Varies	Varies	Good	OU Rental Fleet	Varies
29508	Honda	Pilot LX	2014	5FNYP4H2XEB011322	8	No	Varies	Varies	Good	OU Rental Fleet	Varies
29509	Honda	Pilot LX	2014	5FNYP4H20EB017338	8	No	Varies	Varies	Good	OU Rental Fleet	Varies
29525	Chevrolet	Volt Hybrid	2014	1G1RB6E49EU169720	5	No	Varies	Varies	Good	OU Rental Fleet	Varies
29540	Chevrolet	Malibu LS	2016	1G1ZB5ST6GF346401	5	No	Varies	Varies	Good	OU Rental Fleet	Varies
29542	Chevrolet	Malibu	2016	1G1ZB5STXGF261142	5	No	Varies	Varies	Good	OU Rental Fleet	Varies
29543	Chevrolet	Malibu	2016	1G1ZB5ST8GF268736	5	No	Varies	Varies	Good	OU Rental Fleet	Varies

Veh #	Make	Model	Year	Vin #	Capacity	WC Capacity	Days of the Week Vehicle is in Service	Service Hours	Vehicle Condition	Program to which Vehicle is Assigned (if applicable)	Service Area
29545	Chevrolet	Malibu	2017	1G1ZB5ST0HF159981	5	No	Varies	Varies	Excellent	OU Rental Fleet	Varies
29546	Chevrolet	Malibu	2017	1G1ZB5ST9HF235942	5	No	Varies	Varies	Excellent	OU Rental Fleet	Varies
29547	Chevrolet	Malibu	2017	1G1ZB5ST7HF134558	5	No	Varies	Varies	Excellent	OU Rental Fleet	Varies
S29753	Chevrolet	Chevy Express G1500	2001	1GCEG15W011244313	2	No	Varies	Varies	Fair	OU Rental Fleet	Varies
S29799	GMC	Savana G3500	2006	1GCHG35V161129789	2	No	Varies	Varies	Good	OU Rental Fleet	Varies

Veh #	Make	Model	Year	Vin #	Capacity	WC Capacity	Days of the Week Vehicle is in Service	Service Hours	Vehicle Condition	Program to which Vehicle is Assigned (if applicable)	Service Area
United Seniors											
1	Chevy	Uplander	2005	1GNDV23L45D169384	7	NO	Mon-Fri	8-3	Fair	Aging (60+) Programs	ATHENS COUNTY
2	Chevy	Express Van	2008	1GAGG25K681119881	12	NO	Mon-Fri	8-3	Good	Aging (60+) Programs	ATHENS COUNTY
3	Dodge	Grand Caravan	2014	2C4RDGCG8ER187031	5	1	Mon-Fri	8-3	Excellent	Aging (60+) Programs	ATHENS COUNTY

Summary of Existing Resources

An overall summary of existing resources and an inventory of current services allows better insight into opportunities to coordinate services and the transportation gaps currently in the County.

Athens County has several public and private transportation providers. Multiple providers provide services to clients who qualify under certain criteria or are associated with the organization and its services. Other providers are open to the public and available with no requirements.

The summary of existing resources illustrates gaps in services in the county including:

- Little availability of public and accessible services on the weekends and during the early morning and evening hours during the week.
- Full use capacity of wheelchair accessible vehicles publically available.
- A lack of county-wide affordable services.
- A small number of non-emergency medical transportation providers open to the public.
- A lack of services that operate outside of Athens County.
- A need for the coordination of efforts, specifically with wheel chair accessible vehicles.

IV. Assessment of Transportation Needs and Gaps

In an effort to better understand Athens County needs, the planning committee examined research and data, as well as solicited input from the community in an effort to gather information about needs and gaps in transportation services.

The demographic and socio-economic conditions of the study area are discussed in the Demographics Chapter of this plan. The following overview is an evaluation of the gaps in service based upon geographic data as well as from the perspective of the targeted populations, transportation providers, and the general public.

Athens County coordinated a variety of stakeholders in the area in an attempt to solicit input and request participation from any organization that could potentially be impacted by the coordinated transportation planning process. More information on how the lead agency engaged stakeholder and the general public is available upon request.

The following methods were used to assess transportation needs and gaps

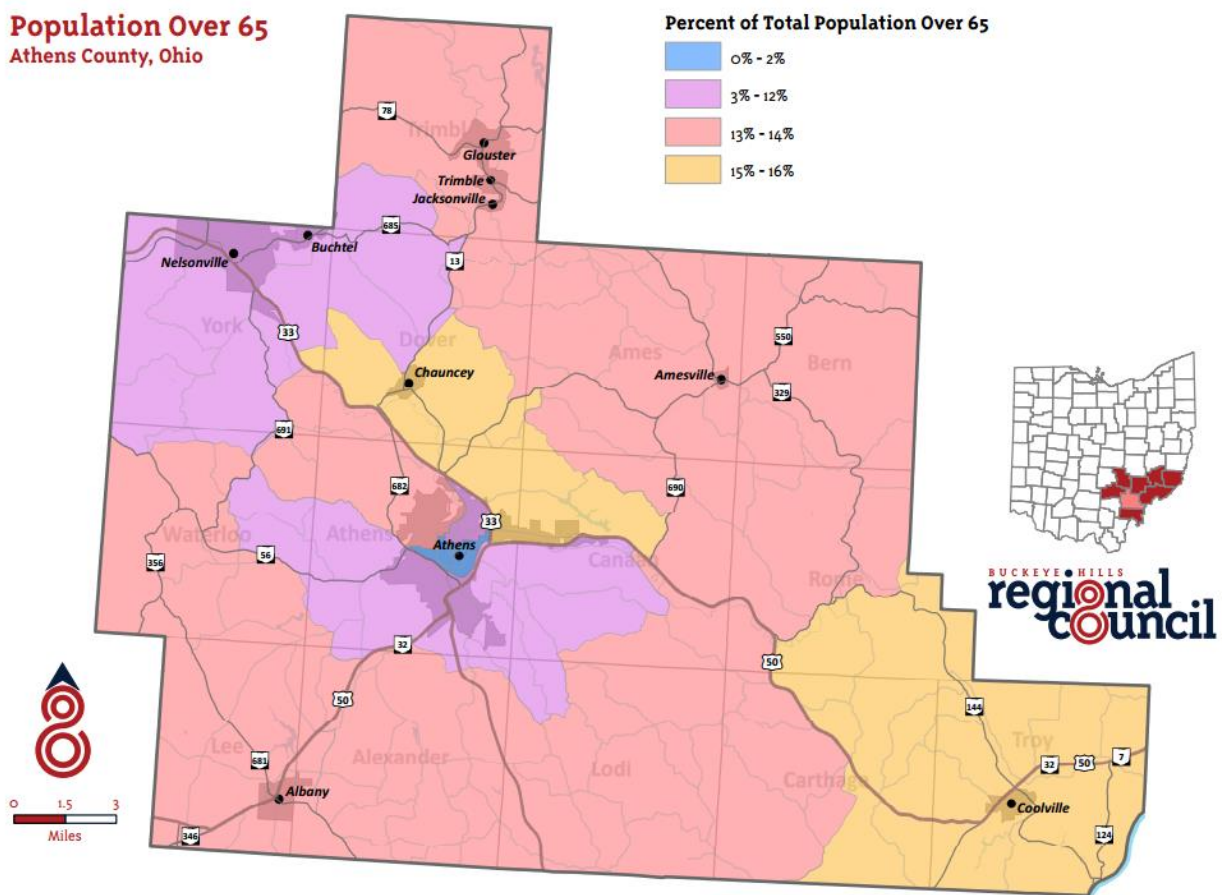
- Assessment of data and demographics
- Release of six (6) transportation surveys to the county focused on:
 - General Public
 - Seniors
 - Disabled Individuals
 - Transportation Providers
 - Social Service / Non-Profit Organizations
 - For-Profit Business
- Nine (9) Transportation Round Tables held throughout the county.

Local Demographic and Socio-Economic Data

Data for each target population group were aggregated by Census Block Group for transportation analysis. The demographic and socio-economic data is valuable because a comparison of where the highest and lowest densities individuals who are most likely to need transportation live. This information can then be compared to the locations of (1) major trip generators, and (2) available transportation services.

The following exhibit 1 illustrates the areas where the number of older adults (age 65 and older) is at or above the national average.

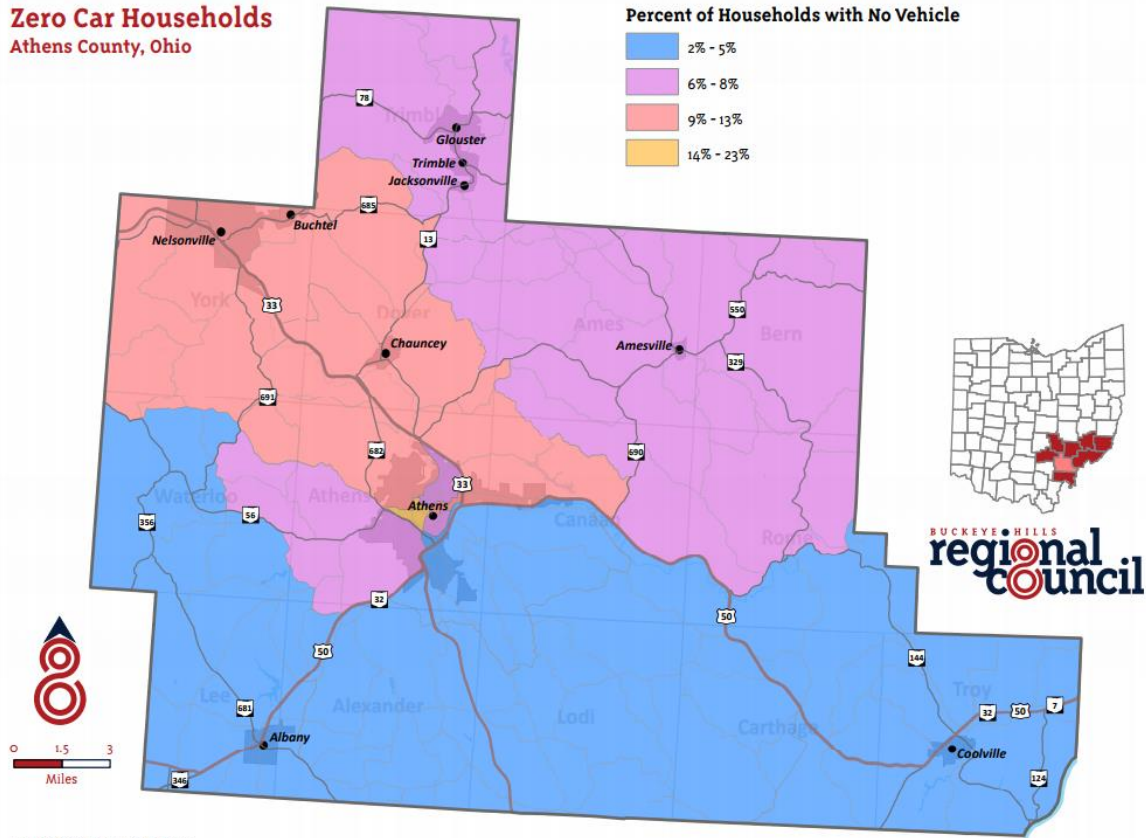
Exhibit 1: Map of Population Density of Individuals Age 65 and Older



The exhibit below indicates the areas where the number of zero vehicle households is above the national average. The absence of a vehicle in the household is often an indication of the need for transportation services.

Exhibit 2: Map of Density of Zero Vehicle Households

Zero Car Households
Athens County, Ohio



Cartography by Jason Pyles, GISP, 2017
<http://www.buckeyehills.org> | 740.374.9436
 Data from the US Census Bureau 2010 ACS. For information about data sources, please contact a GIS Specialist at Buckeye Hills

Exhibit 3-a: Map of Major Trip Generators

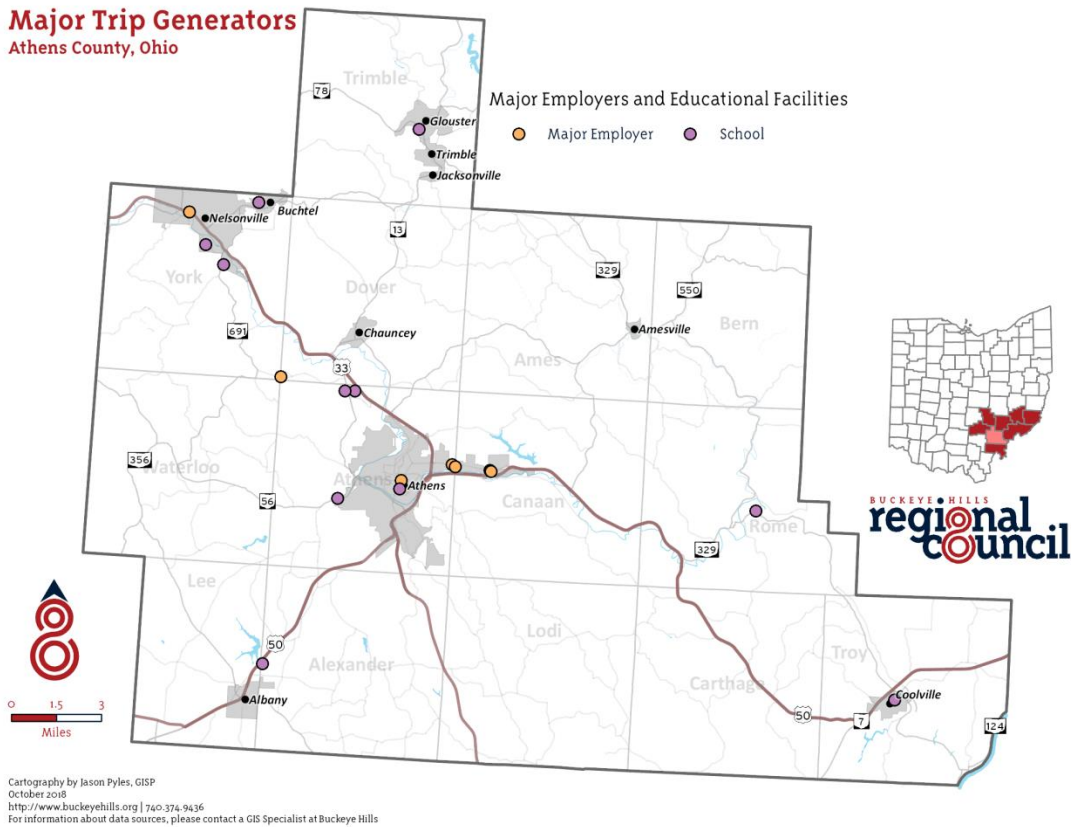


Exhibit 3-a illustrates the locations of the top employment and educational facility destinations for the existing transportation providers as well as major trip generators for anyone in the area, including those who drive a personal vehicle.

Major employers in Athens County include:

- Rocky Boot Company
- Wal-Mart Stores Inc
- Kroger
- Quidel
- Sunpower Inc.
- Global Cooling
- City of Athens

Major education facilities in the county include:

- Ohio University
- Hocking College
- Tri-County Career Center
- Athens City Schools
- Federal Hocking Schools
- Alexander Schools
- Nelsonville-York Schools
- Trimble Schools
- Amesville Schools
- Coolville Schools
- Beacon School

Exhibit 3-b: Map of Major Trip Generators

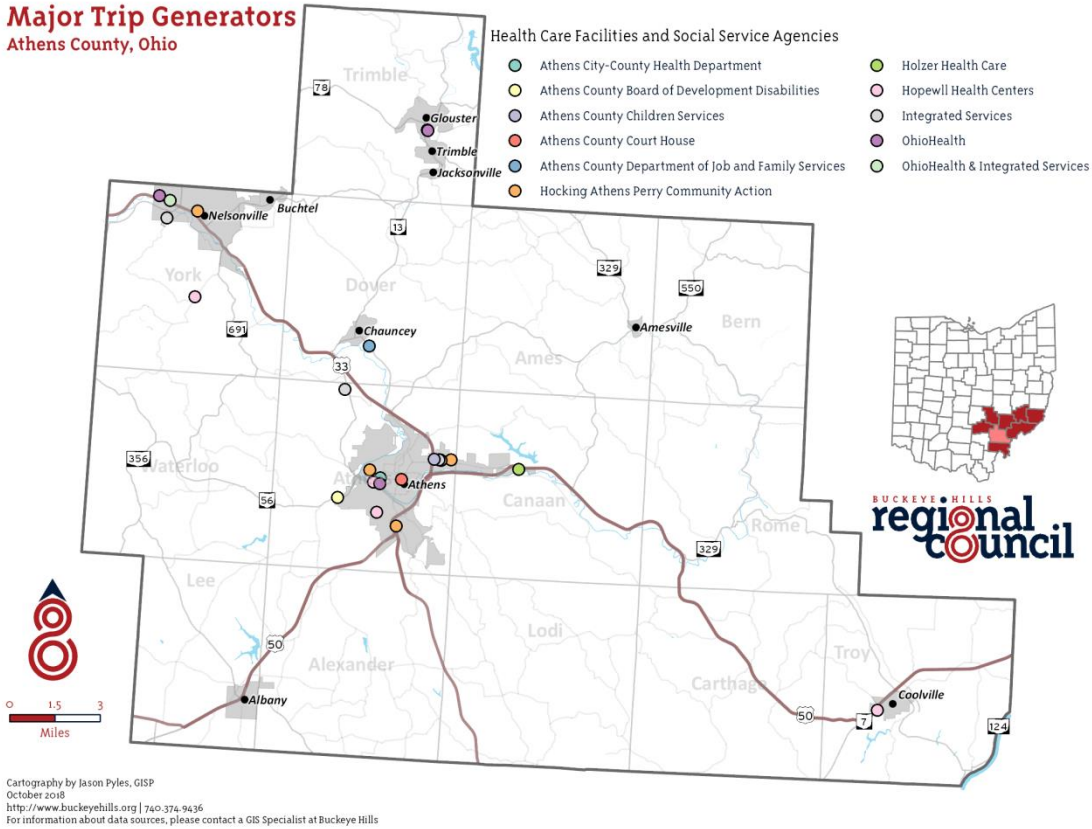


Exhibit 3-b illustrates the locations of the top health care and social service agencies destinations for the existing transportation providers as well as major trip generators for anyone in the area, including those who drive a personal vehicle.

Major healthcare facilities including hospitals, mental health facilities, and urgent care branches include:

- OhioHealth
- Hopewell Health Centers
- OhioHealth & Integrated Services (Mary Hill Center)
- Integrated Services
- Athens City-County Health Department
- Holzer Health Care

Major social services agencies in the county include:

- Athens City-County Health Department
- Athens County Board of Developmental Disabilities
- Athens County Children Services
- Athens County Court House
- Athens County Department of Job and Family Services
- Hocking Athens Perry Community Action
- Integrated Services

Analysis of Demographic Data

The density of individuals age 65 and older is concentrated in the rural areas of the County, markedly along the 33 corridor between Athens City and Nelsonville and in the Southeastern area of the County, surrounding Coolville. These areas have the least amount of affordable transportation options available to them. Most seniors in Athens County reside outside of the city limits in areas further away from medical care facilities and senior services.

A high percentage of zero vehicle households lay along similar areas as seen in Table 1 revealing a population in need of transportation services or programs.

Major trip generators are located mostly in Athens City and Nelsonville. The rural areas of the county need to travel to these cities in order to gain access to job opportunities, medical facilities, food access, social service agencies and educational institutions.

Based on the demographic data above, it is crucial that affordable transportation options are available for community members residing in the rural areas of the county, especially seniors and zero vehicle households, in order to connect them to a variety of services available elsewhere in the county.

General Public and Stakeholder Meetings/Focus Groups

Athens County hosted and facilitated 9 local meetings and focus groups to discuss the unmet transportation needs and gaps in mobility and transportation. 21 people participated in the meetings. Of those, 5 self-identified as older adults and 2 self-identified as being a person with a disability. More information about what meetings were held and attendance at those meetings is available upon request.

During the meeting, the Athens County Mobility Manager presented highlights of historical coordinated transportation in Athens County and discussed the activities since the last Coordinated Public Transit Human Services Transportation Plan that have helped to address some of the unmet transportation needs and gaps in services for the area.

Following the initial presentation, the stakeholders were asked to review the gaps in transportation services and needs from the previous plan/or update and identify any gaps that were no longer valid and any new needs/gaps, which the facilitator deleted/added to/from a list. The focus of the discussion was transportation for older adults, individuals with disabilities, and people with low incomes. However, several topics discussed also impact mobility options for the general public.

After the changes to the needs/gaps list were completed and new needs/gaps were added, each participant was asked to rank the needs/gaps using colored dots representing a high, medium, or low priority or that the remaining gap/need should be deleted.

Participants discussed numerous mobility issues to achieve, preserve, avoid, or eliminate through coordination during the meetings. Coordinated transportation stakeholders will consider these unmet needs when developing transportation goals and strategies, and grant applications. The exhibit at the end of this section provides a summary of the unmet mobility needs discussed during the meeting as well as the needs identified by the survey results.

Surveys

The following survey summary includes the information gained from the following surveys that were performed. 373 surveys were completed: 6% of individuals with disabilities completed the survey; 22% of older adults completed the survey. Total surveys completed are as follows:

- General Public: 229
- Individuals age 60+: 82
- Individuals with Disabilities: 21
- Non-Profit / Social Services: 35
- Business: 6 (Due to low participation this survey and its results are available upon request.)

All questions allowed respondents to mark multiple answers or no answer at all in order to capture a more complete response. Because of this some percentages and numbers may not match the total number of respondents. All surveys can be found in the appendix of this document and collective and individual responses can be provided at request.

Athens County Transportation Survey for the General Public

Table 1: Survey Respondents' Ages

Age		Percent
0-20	7	3.1%
21-40	83	36.6%
41-64	94	41.9%
65+	43	18.9%

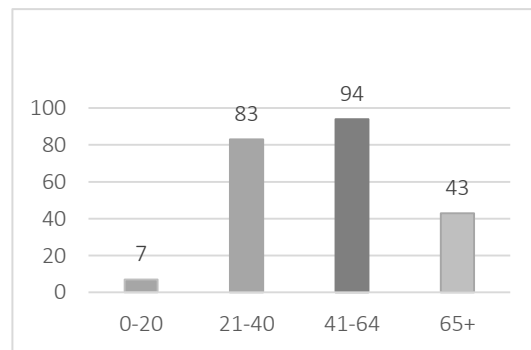


Table 1 illustrates that the survey captured responses from all age groups.

Table 2: Self-Identified

Self-Identified		Percent
Disabled	43	19.1%
Low-Income	82	36.4%
Elderly (60+)	49	21.8%
None of the Above	87	38.7%

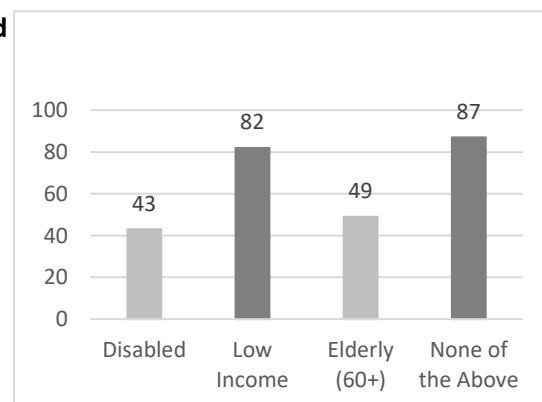


Table 2 illustrates that the general public, low-income, elderly, and disabled individuals participated.

Table 3: Number of Individuals in the Household

	Number of People in Household		Percent
1	63	28.3%	
2	73	32.7%	
3	36	16.1%	
4	34	15.2%	
5	13	5.8%	
6	1	0.9%	
7	2	0.4%	

Table 3 shows that most respondents live alone or with one other individual in their household.

Table 4: Residence Locations of Respondents

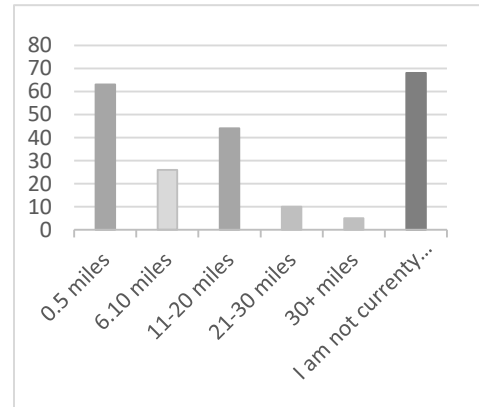
Residence	Percent	
Athens City	71	32.9%
Nelsonville	23	10.6%
The Plains	19	8.8%
Chauncey	12	5.6%
Glouster	10	4.6%
Albany	8	3.7%
New Marshfield	8	6.2%
Millfield	6	2.8%
Amesville	4	1.9%
Trimble	2	0.9%
Buchtel	2	0.9%
Jacksonville	2	0.9%
Guysville	2	0.9%
Shade	1	0.5%

*Other areas identified are located outside of city or village limits.

Table 4 demonstrates the survey captured responses from multiple areas of the county.

Table 5: Location of Survey Respondents' Place of Employment

Work Location		Percent
0.5 miles	63	28.1%
6.10 miles	26	11.6%
11-20 miles	44	19.6%
21-30 miles	10	4.5%
30+ miles	5	2.2%
I am not currently employed	68	30.4%
Retired	8	3.6%



*Other responses include traveling and working from home

Table 5 identifies a large number of respondents' who are currently not employed. Respondents who are currently employed live close to their place of employment or between 11-20 miles away.

Table 6: Location of Survey Respondents' Destinations

Destinations		Percent
To shopping / grocery store	201	89.3%
To the doctor	180	80.0%
A destination in Athens City	155	68.9%
To visit family and friends	142	63.1%
To a social event	132	58.7%
To work	132	58.7%
To a drugstore / pharmacy	124	55.1%
A destination outside of Athens City	121	58.3%
To a department store	120	53.3%
A destination outside of Athens County	109	48.4%
To OU events	86	38.2%
To the hospital	79	35.1%
To church / religious services	71	31.6%
To Job and Family services	46	20.4%
To the Social Security office	32	14.2%
To Congregate dining sites	25	11.1%
To school / class	24	10.7%
To Court / legal services	21	9.3%
To Hocking College	20	8.9%
To childcare	18	8.0%
To dialysis appointments	3	1.3%

Table 6 identifies popular destinations as grocery shopping, doctors' appointments, and destinations located in Athens City. Social service agencies and destination outside of Athens County are often destinations for community members.

Table 7: Mode of Transportation

Mode of Transportation		Percent
I drive my own car	174	76.7%
I walk	76	33.5%
I ride with a family member	70	30.8%
I ride with a friend	70	30.8%
I use public transit	49	21.6%
I ride my bicycle	37	16.3%
I use a taxi	15	6.6%
I call a social service provider	14	6.2%
I use a door-to-door van service	6	2.6%

Table 7 shows a wide-range of transportation options used by individuals including driving their own car, walking, or riding with a family member or friend.

Table 8: Statements that Have Been True for Respondents in the Past Six Months

Statement		Percent
I can't afford to use a taxi service	53	39.6%
I do not have a vehicle	42	31.3%
I can't afford gasoline	37	27.6%
I do not have a driver's license	36	26.9%
My vehicle is broken down	32	23.9%
My vehicle is not reliable	29	21.6%
I can't afford car insurance	24	17.9%
I do not have car insurance	22	16.4%
My driver's license is suspended	6	4.5%

Table 8 identifies several transportation barriers related to financial hardships and a lack of access to a reliable personal transportation vehicle.

Table 9: Key Insights

The comments left by participants to the question: ‘What Improvements should be made to the current transportation services in Athens County?’ The most frequent responses were:

- Expansion of service area to a County-wide service, especially to Nelsonville.
- Extension of public transportation hours for commuters (earlier / later and weekend services)
- More capacity of current services
- Outreach and education about current transportation services available

Notable Comments

"More Wheelchair accessibility, availability on the weekends."
"Possibility to expand the area of services a few times of the day. Early morning and the end of the day for people who many need a ride to and from work that live in outlying areas."
"Routes to surrounding villages."
"More vans for AODT so there are more rides available."
"Bus to Nelsonville!"
"More places, more often and out into the rural areas somehow."
"Expand range and coverage."
"You need to expand to Glouster. I work there and many people could work in Athens if they had transportation."
"More routes, more stops."
"I would like to see a county-wide transit system extended to all villages, including New Marshfield."
"Wider coverage for regular bus service."
"An actual county-wide public transportation service NEEDS to be implemented. The majority of people who need the service live outside the service area."
"...a monthly 'commuter' pass for the GoBus that made the regular trip more affordable."
"Expanding to different areas"
"More options for rural residents to use public transit for work."
"A schedule and route built to allow commuters to work in Athens City."
"Better coverage outside of Athens City limits"
"I would like to see more options to get people like me that need to go to the VA and other places."
"Service from Athens to Nelsonville"
"Expand services."
"Having bus services from Nelsonville to other cities in Athens would be a great help."
"Provide free APT bus rides to ALL residents."
"Expanded bus service"
"Out of County service."
"Offer direct service to and from hospitals."
"No public transportation available before 7am prevents me from using it to get to work or church."
"Earlier morning start."
"...Lots of early morning and evening routes"
"...bus between Athens and Nelsonville for Hocking College students, and for those who commute between the two cities for work."

Table 10: Key Insights 2

The comments left by participants to the question: ‘If you do not currently use public transit, why not?’
The most frequent responses were:

- It doesn’t come to where I live.
- The hours of service do not line up with work hours
- Unaware of how to utilize services
- The bus lines are not frequent enough

Notable Comments

"Does not come to my neighborhood."
"It is not provided in the area I live in. The nearest bus stop would be several miles away to access it."
"Buses don't come to where I live."
"To get to the nearest bus stop would mean about a mile's walk which I can't do, and cab services are prohibitively expensive."
"No route where I live.""
"In general it's not convenient for me, especially the timeframes."
"I'd use it more if it went from where I live to where I need to go."
"It is convenient to go one way (such as to Athens from Chauncey) but very time-consuming to return (from Athens to Chauncey appx 40+ minutes. Because of this I don't take the bus as much as I otherwise would like to."
"Ignorant of schedules or and don't plan ahead."
"Not available where I live."
"It is not available enough to utilize for work transportation."
"No service to us."
"They don't come out this far."
"Live outside the service area."
"I live in Albany but work in Athens. No bus transportation between home and work."
"Timing."
"Bus stop is so far from my house & doesn't run frequently enough to make it a good choice for me."
"I live too far out; it's not convenient for me. I'd like to save money on gas where I go to work, but APT doesn't go to Nelsonville."
"Doesn't come often enough or go late enough for it to be feasible for me."
"It doesn't come to my area."
"Not readily accessible. I have little knowledge about transportation services."
"I do not know where they run or where to be picked up."
"I live too far away, but work in Athens."
"It is not available where I live and work. If it was, I would use it instead of traveling by car quite often."

Final Insights and Analysis of Data: General Population Survey

Athens County is ranked as the poorest County in the state. Low-income individuals lacking transportation options have no access to jobs, social services, medical facilities, and educational institutions. A large number of respondents are currently not employed, in part due to little or no access to affordable transportation options connecting rural areas to the major trip generators in the city of Athens and the city of Nelsonville.

Financial hardships also serve as a barrier for community members to access a variety of transportation options available to them due to their inability to pay for services.

Community members who wish to use services to commute to work or school are unable to because they:

- Live or work outside of the service area.
- Cannot afford to pay for services every day.
- The services do not run early enough, late enough, or on the weekends.

Many community members are unaware of:

- The services available in their area.
- How to utilize these services.

Respondents who can utilize services do not because:

- The timeframes are inconvenient.
- The services do not run early enough, late enough, or on the weekends.
- The services are running at full capacity and cannot accommodate them.

Strategies and Goals

- Extension of services hours to run earlier and later.
- Expansion of service days to include Saturday and Sunday.
- Additional capacity for door-to-door accessible van services.
- Expansion of service areas to a county-wide area, especially fixed-route systems.
- Lower or free fares.
- Outreach of services.
- More frequency of service with fixed-route systems.
- Travel training to individuals, organizations, and businesses.

Athens County Transportation Survey for Individuals Age 60+

Table 11: Age of Senior Respondents'

Age		Percent
60-65	13	15.9%
66-70	20	24.4%
71-75	12	14.6%
76-80	13	15.9%
80+	23	28.0%
Other	1	1.2%

Table 11 illustrates that the survey captured responses from Seniors of varying ages.

Table 12: Number of Individuals in Senior Respondents' Households

Household		Percent
1	44	53.6%
2	29	35.4%
3	5	6.1%
4	4	4.9%
5	0	0.0%
I live in assisted living	1	1.2%

Table 12 illustrates a majority of senior respondents live alone or in a two-person household.

Table 13: Location of respondents' residence

Residence		Percent
Athens City	27	34.6%
Nelsonville	16	20.5%
Glouster	9	11.5%
Albany	6	7.7%
The Plains	4	5.1%
Trimble	2	2.6%
Buchtel	1	1.3%
Jacksonville	1	1.3%
Guysville	1	1.3%
Millfield	1	1.3%
Other	11	14.3%

Table 13 illustrates that the survey captured responses from various areas in the County.

Table 14: Destination of Senior Respondents'

Destinations		Percent
To shopping / grocery store	53	77.9%
To medical / dental appointments	50	73.5%
To a drugstore / pharmacy	48	70.6%
To visit family and friends	42	61.8%
To social outings	40	58.8%
Outside of Athens City	38	55.9%
Inside of Athens City	37	54.4%
Outside of Athens County	34	50.0%
To religious services	25	36.8%
To work	19	27.9%
To the Social Security Office	15	22.1%
To congregate dining sites	13	19.1%
I don't drive	12	17.6%
To Job and Family services	7	10.3%
To School	4	5.9%

Table 14 indicates that the most common destinations for Seniors are shopping / grocery stores, medical and dental appointments, and drugstore / pharmacy locations.

Table 15: Senior respondents' mode of transportation

Mode of Transportation		Percent
I drive my own car	51	66.2%
I call a family member	27	35.1%
I call a friend for a ride	21	27.3%
I walk	16	20.8%
I ride public transportation	7	9.1%
I call a social service provider	5	6.5%
I use a door-to-door van service	4	5.2%
I ride my bicycle	3	3.9%
I use a taxi service	3	3.9%
I use RSVP Senior Transit	4	5.2%

Table 15 identifies driving my own car, relying on family and friends for transportation and walking as the most frequently selected modes of transportation among seniors.

Table 16: Circumstances Under Which Respondents' Prefer not to Drive

Circumstances		Percent
At night time	30	47.6%
I do not drive	21	33.3%
On high-speed highways	15	23.8%
Unfamiliar area	13	20.6%
To a medical appointment	8	12.7%
More than 3 miles away	6	9.5%

Table 16 demonstrates circumstances under which seniors will not drive, the most common being at night time, on high-speed highways and in unfamiliar areas.

Table 17: Reasons why respondents are currently unable to drive:

Unable to Drive		Percent
I do not have a license	8	23.5%
I do not have a vehicle	8	23.5%
It is unsafe	8	23.5%
I am temporarily disabled	5	14.7%
I can't afford gasoline	5	14.7%
I can't afford car insurance	3	8.8%
My car is broken down	2	5.9%
My car is not reliable	1	2.9%
My license is suspended	0	0.0%

Table 17 illustrates reasons why some seniors are unable to drive, the most frequent being I do not have a license, I do not have a vehicle, and it is unsafe.

Table 18: Key insights 1

Comments left by respondents to the question, 'What improvements could be made to the transportation options available to individuals ages 60 or more in Athens County?' The most frequent suggestions were:

- Expansion of services
- More information available to seniors about transportation options
- Extension of weekend hours, especially on Sunday
- Less expensive transportation options

Notable Comments

"Bus service on Sunday, even if less frequent than other days."
"Public transportation in Glouster, Red town, Trimble areas."
"Availability to Nelsonville."
"More Albany stops, add New Marshfield and Nelsonville"
"More information needs to be provided as to what is available."
"More on-demand, more rural bus service."
"Accessible for people that have difficulty walking."
"Buses could cover a larger area."
"Wish it was free to take the bus."
"New routes that go outside of the county..."
"More time options / less expensive."
"More information available"
"Let the 60 & up know there is a service are available in the area and what the cost from one area to another and to where they may have to go."
"Buses to other towns."

Table 19: Key Insights 2

Comments left by respondents to the question, 'If you do not use Athens County's transportation services, why not?'. The most frequent answers were:

- I drive my own car
- I don't know enough about these services
- I can't afford these services
- These services don't come where I live

Notable Comments

"I don't know enough."
"I drive."
"None comes my way."
"Am currently able to drive my 10-year old car. Will drive it as long as it lasts, but may not buy another one if there is reliable and convenient public transportation."
"No need, not available where I live."
"I drive for both of us."
"Don't know enough about them."
"Because nothing, not taxis or buses, come to my area."
"I don't really need it yet, but will soon and will use the bus for certain."
"The walk to the bus stop is fairly far from my house."
"I do not know anything about this."
"I use a service from Morgan County to get to Columbus for Dr appt. every 6 months."
"Don't know about it."
"Don't know enough."
"Because of just getting out of the nursing home I do not know about the services in my area at the time and if it costs too much I cannot pay for it."
"Because I don't know about the service, I cannot afford it, I live on a fixed income of money each month."
"I live in Glouster."
"Relies on family."

Final Insights and Analysis of Data: Individuals Age 60+

Individuals ages 60 and over are unaware of current transportation options available and how to utilize them. Because most seniors rely on caretakers and family and friends for transportation those individuals may also be unaware of current services and senior discounts related to transportation.

A majority of seniors live alone and on a fixed income. They cannot afford transportation services available to them even if they are aware of the services in their area. This limits their trips to the availability of friends or family to take them to their destinations as well as constitutes when appointments can be made.

Senior respondents living outside of service areas are unable to utilize transportation services and would like to see an expansion of services. Those who do live in the service areas cannot utilize these services on the weekend because there are few affordable options operating on Saturday and Sunday.

Affordable door-to-door services are currently running at full capacity and seniors who have attempted to utilize these services have been denied and left with less options. They would like to see more capacity with these services to meet the needs of seniors in Athens County.

Strategies and Goals

- Extension of services hours to run earlier and later.
- Expansion of service days to include Saturday and Sunday.
- Additional capacity for door-to-door accessible van services.
- Expansion of service areas to a county-wide area, especially fixed-route systems.
- Lower or free fares.
- Outreach of services to individuals and caretakers.
- Travel training to individuals, senior organizations, and caretakers.

Athens County Transportation Survey for Individuals with Disabilities

Table 20: Age of Respondents

Age	Percent	
0-20	2	10.0%
21-40	9	45.0%
41-64	10	50.0%
65+	0	0.0%

Table 20 illustrates that the survey captured responses from Individuals with disabilities of varying ages.

Table 21: Respondents' Residence

Residence	Percent	
Athens Twp.	2	40.0%
Dover Twp.	2	40.0%
Bern Twp.	1	20.0%

Table 21 highlights the different locations the respondents' residences' are located.

Table 22: Number of Individuals in Respondents' Household

Household	Percent	
1	7	36.8%
2	5	26.3%
3	5	26.3%
4	1	5.3%
5	0	0%
6+	1	5.30%

Table 22 illustrates that individuals with disabilities live alone or in 2-3 person household.

Table 23: Respondents' Self-Identified Disability

Disability	Percent	
Developmental	16	80.0%
Mobility	8	40.0%
Hearing	2	10.0%
Vision	2	10.0%
Muscular Dystrophy	1	5%

Table 23 highlights the respondents' self-identified disabilities, mostly developmental and mobility related.

Table 24: Respondents' Destinations

Destinations		Percent
Medical / health appts.	16	80.0%
Social events	13	65.0%
Errands	12	60.0%
Government Services	12	60.0%
Attending a day hab	11	55.0%
To the drugstore	11	55.0%
Visit family / friends	10	50.0%
To or from work / job	10	50.0%
Religious services	7	35.0%
To congregate dining sites	7	35.0%

Table 24 highlights the respondents' frequent destinations with the most popular being medical and health appointments, social events, running errands and to government assistance services.

Table 25: Respondents' Mode of Transportation

Mode of Transportation		Percent
Caretaker	12	60.0%
Family /neighbors / friends	10	50.0%
Non-Medical Transportation	10	50.0%
Door-to-door van service	10	50.0%
Walk	6	30.0%
Drive own car	4	20.0%
Ride public transit	4	20.0%
Taxi	2	10.0%

Table 25 illustrates that individuals with disabilities rely on caretakers, family, friends, and neighbors for transportation.

Table 26: Medical Appointments

Medical Appointments	Percent	
Once a week	0	0.0%
Twice a week	2	10.5%
Once a month	7	36.8%
Twice a month	4	21.1%
Once a year	2	10.5%
Twice a year	4	21.1%

Medical Appointments

Outside of Athens County	Percent	
Yes	9	47.4%
No	10	52.6%

Missed Medical Appointments

Lack of Transportation		Percent
Yes	13	65.0%
No	7	35.0%

Tables 26 demonstrate the frequency of medical appointments as one per month with half of the appointments being located outside of Athens County. 65% of respondents had missed a medical appointment in the past due to a lack of transportation.

Table 27: Days difficult to Find Transportation Options

Difficult Transit Days		Percent
Sunday	14	87.5%
Monday	4	25.0%
Tuesday	4	25.0%
Wednesday	4	25.0%
Thursday	4	25.0%
Friday	7	43.8%
Saturday	13	81%

Table 27 illustrates that Saturday and Sunday are both difficult days for individuals with disabilities to find transportation options in service.

Table 28: Statements on Not Using Public Transportation Options

Transportation Problems		Percent
Service hours	12	60.0%
I don't know how to use it	9	45.0%
I can't afford it	8	40.0%
It doesn't come where I live	8	40.0%
I need a PA to ride with me	6	30.0%
It doesn't go where I want to go	5	25.0%
It's not accessible	4	20%

Table 28 demonstrates reasons why individuals with disabilities do not utilize public transportation services. The most frequent reasons being that service hours do not line up with what they need to do, not knowing how to utilize the services, not being able to afford the services, and the service area not covering the residents of the respondents.

Table 29: Key Insights

Responses the open questions ‘How can transportation for individuals with disabilities be improved in Athens County?’

- Extended and additional hours on the weekend and during evenings
- Extension of services to Nelsonville and rural areas
- Caretaker passes to ride for free

Notable Comments

"Athens on Demand run on weekends, later into the evening."
"I need transportation on Saturdays and the public system is complicated and limited. I have to rely on family and friends for the weekend."
"Have an assistance ride each bus so an individuals with a developmental disability is safer."
"Run on Sunday."
"Evenings, weekends, and a city bus to Nelsonville, and cheaper rates."
"Evenings and weekends would be helpful...I like Athens on Demand but it doesn't work for me now due to times available."
"More access to those of us who live in the country."
"More accessible vehicles, Athens on Demand evening and weekend expanding."
"More Athens on Demand rides would be helpful."
"More hours, evenings and weekends. Have the city bus come out to Nelsonville."
"Extended hours including evenings and weekends. Allow caretaker to ride for free with individual."
"Have options that can be billed through a Medicaid waiver."
"Offer more services to the areas outside the city limits plus evenings and weekend."
"More hours available from Athens on Demand especially. Down the road it would be great to have some driverless cares in this area!"

Final Insights and Analysis of Data: Individuals with Disabilities

Individuals with disabilities often have no access to affordable transportation services because:

- The service hours do not run early or late enough.
- The service hours do not run on the weekends.
- The services are running at full capacity and cannot accommodate them.
- They live outside of the service area.

Many individuals with disabilities live on a fixed-income and cannot affordable current transportation options available to them. There is a lack of knowledge of programs and the 'Elderly & Disabled' pass offered for them, including that their caretakers could ride with them for free on certain providers.

Respondents require transportation to medical appointments often, at times outside of the County. There currently are few options located inside Athens County they can affordably transfer individuals outside of the County, even for medical reasons. Due to this many respondents have recorded that they have missed medical appointments as a result of a lack of transportation.

Strategies and Goals

- Extension of services hours to run earlier and later.
- Expansion of service days to include Saturday and Sunday.
- Additional capacity for door-to-door accessible van services.
- Expansion of service areas to a county-wide area, especially fixed-route systems.
- Lower or free fares
- Outreach of services to individuals and PSAs
- Creation of affordable transportation services that travel outside of the County, especially for medical services.

Athens County Transportation Survey for Social Services and Non-Profits

Table 30: Services Offered by Organization

Services Offered		Percent
Medical Services	8	22.9%
Social Services	14	40.0%
Children and Family Services	10	28.6%
Low-Income Services	10	28.6%
Disabled Services	12	34.3%
Senior Services	5	14.3%
Youth Services	7	20.0%
Other:	13	37.1%

Table 30 demonstrates that respondents provide a variety of different services.

Table 31: Location of Organizations

Location		Percent
Athens City	26	81.3%
Nelsonville	7	21.9%
The Plains	5	15.6%
Chauncey	4	12.5%
Amesville	1	3.1%
Albany	1	3.1%
Coolville	3	9.4%
Glouster	3	9.4%
Trimble	1	3.1%
Other:	2	6.2%

Table 31 illustrates the location of the organizations, with a majority being located in Athens City and Nelsonville.

Table 32: Consider Transportation a Barrier

Transportation Barrier		Percent
Yes	30	85.70%
No	3	8.60%
Other:	3	8.50%

Table 32 demonstrates that most respondents consider transportation a barrier to their clients.

Table 33: Transportation for Utilizing Services

Importance of Transportation in Utilizing Services			Percent
1	Not Important	1	2.9%
2		1	2.9%
3		1	2.9%
4		5	14.3%
5	Extremely Important	27	77.1%

Table 33 demonstrates the importance of transportation for clients to access the services the respondent organizations offer.

Table 34: Providing Transportation

Provide Transportation	Percent	
Yes	12	34.3%
No	16	45.7%
Other:	10	28.5%

Table 34 illustrates the organizations either provide their own transportation for clients who qualify or coordinate with local transportation providers to provide services.

Table 35: Transportation Type Offered

Transportation Offered	Percent	
We manage and provide	15	68.2%
We work with providers	12	54.5%
We do not provide	3	13.6%
Other:	1	4.5%

Table 35 illustrates that organizations are working with providers to provide transportation services.

Table 36: Clients Missed Appointments

Missed Appointments		Percent
Yes	27	77.1%
No	2	5.7%
Other:	6	17.1%

Table 36 shows that a large number of organizations have had clients miss appointments due strictly to a lack of transportation.

Table 37: Employee Transportation

Employee has Missed Work to Transport a Friend/Fam		Percent
Yes	12	35.30%
No	19	55.90%
Other:	3	8.80%

Table 37 demonstrates that employees of the organizations miss work due to providing transportation for a friend or family member.

Table 38: Client Dropped from Program / Assistance

Clients Dropped due to a Lack of Transportation		Percent
Yes	15	44.10%
No	15	44.10%
Other:	4	11.70%

Table 38 shows that clients have been dropped from services due to missed appointments based on a lack of transportation.

Table 39: Key Insights

The respondents answered to the question: ‘What could be done to improve transportation options for community members utilizing your services?’

The most frequent answers were:

- Expansion of services to County-wide service areas
- Later, earlier, and weekend hours for commuting purposes.
- Free or lowered fares

Notable Comments:

"I would love to see an expansion of On Demand Transit. It is so valuable but often difficult to arrange for people in remote areas of the County, at least on short notice."

"Make it more widely available for those served by the county board."

"Many of our members live too far to use public transit, they have no money for services where they have to pay. There is little to no way for many people to get to meetings or even to get food. This is a very poor community that needs transportation that reaches into the rural communities for free."

"Transportation for small villages and more rural areas."

"Higher transportation rates could aid in improving our fleet and maintenance."

"Bus on Sundays and later hours. Bus to Nelsonville."

"Bus service in a wider area, more/better bike path access."

"City bus going further out into Guysville/Coolville."

"Having public transportation routes that extended out to the smaller villages/townships in the county and made the round trip to and from the nearest city (Athens/Nelsonville/Albany)..."

"Gas Vouchers."

"Expanded hours for 2nd shift workers & weekends."

"More free transportation options. Most clients are on a very limited budget."

"Additional funding to all transportation providers could offer more options."

"Last-minute options."

"Increase locations on bus route; especially Nelsonville, and other close areas."

"Make it more accessible throughout the county, extend the hours, run on Sunday."

"Extend bus service out into the county."

"As an advocate for electric-based transportation, we believe more options for electric vehicle charging will yield many benefits. Electric and hybrid-electric vehicles will soon be the most cost-effective option for future transit service investments and planning."

"Bus route from Athens to Nelsonville, especially on Final Fridays of the month."

"More inexpensive options."

"Provide transportation across county lines."

"More frequent routes."

"Possibly trip tickets for people to come to pantry to get food by providing them gas to get there."

"Post a bus schedule. Let people know about on demand. Have more transportation options in general."

"Public transit county wide."

"Low cost or free, convenient, easy to schedule."

"Free transit."

Final Insights and Analysis of Data: Social Services / Non-Profit Survey

Clients tend to live in rural areas of the County where little affordable transportation options are offered. Many are unaware of the services available to them or how to utilize them. Due to the lack of affordable transportation options to the rural areas of the County, it greatly effects individuals' access to social service agencies and assistance.

Many clients can't utilize public transportation because the hours of service do not run late enough, early enough, or on the weekend to be used for commuting or job access. This is especially true for second shift employees.

Clients utilizing social services often do not have the financial means to utilize private or public transportation. Programs that support gas vouchers or free and reduced fares for low-income individuals would be beneficial to clients and organizations that require clients to attend appointments to continue utilizing assistance.

Organizations' employees are unaware of transportation services to direct clients to or don't know how to utilize services.

Coordination and partnerships to provide transportation to clients is present but with room to grow and expand. Several agencies provide their own transportation while some work with transportation providers throughout the county to fill the gaps for their clients.

Roundtable Key Insights and Notable Comments

The Athens County Coordinated Plan Planning Committee decided to hold transportation round tables in different locations throughout the County in order to gain a focused understanding of certain areas' needs and gaps. If community members did not attend these round tables, the Athens County Mobility Manager conducted transportation outreach questions to local groups and meetings to gain insight. Listed below are the notable discussions for each area with area specific priorities and goals that differ from the overall goals derived in the strategies and goals section of this document.

Chauncey Transportation Round Table

October 20th, 2017 at the Friends Meeting Place

The following items were discussed in relation to Chauncey and the County:

- Create a closer bus hub in The Plains to allow easier transfer for Chauncey residents.
- Build sidewalks especially on Rt. 13 as many people walk unsafely there.
- Build a bike lane on the roadway to Athens County Department of Job and Family services as many people walk there to utilize services with no sidewalk.
- Express services from the villages to the city that connect to the bigger Athens Public Transit service area more frequently.
- Extended hours and frequency of service in Chauncey.
- Weekend on-demand service hours.
- Increase routes on the GoBus.
- Construction of shelters and benches at marked bus stops.
- Addition of a Chauncey to Nelsonville route addition.
- Outreach of services to Chauncey residents.
- Optimize schedules for transfers to minimize wait time for riders.
- Install tap cards for fares.
- 1\$ shared ride option for on-demand services.
- Easier and simpler tracker app for services.

Prioritized Goals for Chauncey that do not align with County-wide goals:

- Addition of safe, accessible sidewalks, especially on SR13 and leading to the Athens County Department of Job and Family Services.
- Create bike lanes on the main road.
- More frequency of service with fixed-route system in Chauncey.
- Two-way traveling bus options.

Coolville Transportation Round Table

October 23rd, 2017

The following items were discussed in relation to Coolville and the County:

- Create a bike spur off of the Athens Belpre Rail Trail extension that allows access to Coolville residents.
- Create a safe way for residents to cross US50
- High need for transportation services to Athens City and Belpre to allow access to services available there
- Need for transportation to get the Athens County Department of Job and Family Services in Chauncey.
- Mobile food pantries for Coolville as currently there are none there.
- Create a bike path in Stewart as the streets are not safe to ride on
- Conduct more outreach about current transportation services
- Many residents feel isolate din Stewart and in Coolville
- Better transportation access to educational institution from the local schools
- People who have vehicles need money for transportation
- Training or information to youth and teenagers about transportation options for employment options outside of the villages / access to high education institutes
- Provide GoBus travel training for community in the summer
- Local festival outreach possibilities mentioned
- Continue bike rodeos for kids
- Build sidewalk in Stewart, it is dangerous to walk and/or bike there

Prioritized Goals for Coolville that do not align with County-wide goals:

- Connect Coolville with the Athens Belpre Rail Trail after completion
- Construct a safe option for residents to cross US50 in order to gain access to the only local food and shopping options.
- Connect Coolville residents with close food pantry options or a safe way to walk to the closest food pantry (2 miles away on US32/50)
- Addition of bike lanes in Stewart for safety
- Construct a safe sidewalk in Stewart for residents

Athens City Transportation Roundtable for Seniors

October 24th, 2017

There were no attendees to this meeting. The Athens County Mobility Manager visited the Congregate Dining site in Glouster, Ohio to talk to seniors about transportation. Many of the issues discussed aligned with survey responses and overall goals listed at the end of this document. The following items were expressed and discussed:

- Several senior rely on family member and friends for transportation.
- Outreach of current service to seniors.
- Extended and weekend hours to on-demand services.
- Medical transportation for seniors that is affordable.
- Affordable transportation for seniors.

Nelsonville Transportation Roundtable

October 25th, 2017

There were no attendees to the Nelsonville roundtable. The Athens Mobility Manager continues to work with multiple organizations, businesses, and individuals located in Nelsonville. The most common transportation items discussed include:

- An expansion of fixed-route services to Nelsonville.
- More transportation options for Hocking College students to gain access to services available in Nelsonville city such as grocery stores and medical facilities.
- More affordable options for low-income individuals.
- More capacity with door-to-door services
- Identify two stops in Nelsonville for inter-city bus system, one on campus and one in the main square.
- Traffic to the area is heavy in the morning and evening, an expansion of services would help alleviate that.

The Plains Transportation Roundtable

October 26th, 2017

There were no attendees to The Plains roundtable. The Athens Mobility Manager had been working with groups in the area regarding transportation in The Plains. The following was expressed and discussed:

- Construction of shelters and bench at Athens Public Transit bus stops
- Build a sidewalk along Elm Street to create a safe route for students attending Athens High School.
- Restructure current Athens Public Transit bus routes to reach areas off of the main road.
- More frequent services for The Plains.
- Services in both directions for residents, toward Chauncey and toward Athens City

Glouster Transportation Round Table

October 30th, 2017

- Construct assessable sidewalks in Glouster for the safety of residents.
- Elderly individuals in wheelchairs are known to ride their wheelchair on the street due to a lack of sidewalks.
- Outreach of services to community members
- Expansion of Athens Public Transit services to the area.
- Additional bike racks and parking services around the stadium for games and events
- Educate community on safety laws regarding bikes and cars on the road
- Extension of the bike path to the area
- More frequent GoBus hours to areas for commuting individuals
- Extended hours of services for kids in the evening who work in the cities or are attending school
- Conduct bike rodeos in Glouster / bike aid events
- Glouster residents need transportation for job access
- Create a passenger train to connect Glouster to the cities

Prioritized Goals for Glouster that do not align with County-wide goals:

- Creation of accessible sidewalks on SR13 through town.
- Additional bike racks and parking services around the stadium.
- Extension of the bike path to the area.
- Creating a passenger train connecting Glouster to the County.

Athens City Transportation Roundtable for Individuals with Disabilities

November 1st, 2017

- More service times available and times on Saturday, especially with vehicles that are accessible
- Change communications with Medicaid transportation to be more accessible to those with disabilities.
- Many individuals need transportation to special events.
- Outreach and education to local caregivers about current transportation options.
- More accessible sidewalks, especially in uptown Athens City.
- Overall outreach of services, especially transit training
- More service hours for people with jobs, earlier and later overall
- More frequent bus hours so individuals with disabilities don't need to wait long between buses if they miss one.
- Same hours for all of the bus lines
- A simpler map of current services for those with disabilities
- Extension of services to Nelsonville for day programs there and for students at Hocking College. Possible stops would be at Hocking College and Rocky Boots

- Extended on-demand hours, both service and office, in case of a cancel or emergency
- More capacity of on-demand services as they are sometimes booked to capacity.
- Transportation options between senior centers and day hubs
- Several buildings uptown are not accessible and due to their Historic status are not held to the same accessibility rules as newer buildings.
- GoBus times that line up more conveniently with the airport
- Create an E & D pass for the GoBus
- Outreach with the E & D passes for Athens Public Transit to individuals with disabilities
- Make getting the E& D pass easier instead of having to go to City Hall
- Bike paths are accessible but the neighborhoods getting there are not. More accessible sidewalks.
- Shelters and benches at bus stops
- Outreach about how Personal Care Assistants can ride for free

Athens City Transportation Roundtable for the General Public

- Extended service hours
- Expansion of services, especially to Nelsonville
- Have people in leadership positions utilize the transportation systems so they can understand it better.
- Better designed bus stops with shelters and benches.
- More technology in services, such as WiFi capable bus stops.
- More capacity for Athens on-demand transit services, including non-accessible vans.
- More transportation options to GoBus stops, such as in Nelsonville.
- Updated sidewalks that are safe and accessible.
- Create a sidewalk committee.
- More lighting and safety on certain areas of the bike path.
- Create an app for GoBus mapping in real time.
- Lower prices for the GoBus
- More frequent bus stops
- Redesign the map and time maps to be easier to read and understand.
- Poster in the shelters that show what stops are.
- Names of the bus stops on the bus stops.
- Free fares for everyone.
- Coordinate efforts with other private transportation providers.
- More transportation for nursing homes.
- Create a rideshare network with local churches.

Prioritized Goals for Athens City that do not align with County-wide goals:

- Implementation of advanced technology into services.
- Creation of a sidewalk committee.

Albany Transportation Roundtable

November 7th, 2017

- Expansion of services to Albany
- Keep the fare low
- Service times based on employment hours
- Stops at the Library, bank, dollar general, loop service, senior center
- Medical appointments transportation needed for new health clinic at Alexander School across SR50
- More capacity
- More communication / outreach
- Put a GoBus sign at the Marathon station on-call stop in Albany
- Sidewalks are not accessible or safe
- Many residents walk on the street
- Create and adopt a Complete Streets policy for Albany
- Dangerous crossing the highway to the school, Sun Electric, Lions Club
- Construct a tunnel (one used to exist there)
- Albany to Athens bike path connector
- Albany to Moonville Tunnel (Vinton/Athens)
 - 56 is used a lot by bicyclist and motorcyclist
- Safe Routes to Schools / School owns that road
- Bikes lanes if they're cheap for the village
- Bike racks are available at the library and the park, more needed
- Book a bike program at the local library
- Bikes for a business growth connecting Moonville / Hocking / Athens
- Lake Snowden horses are in the back
- Horses on the path
- Route 56 needs signage for bikers
- Create a program that is income-based for private sidewalk upkeep and installation / repair.

Prioritized Goals for Athens City that do not align with County-wide goals:

- Construction of a bike path to Lake Snowden
- Safe crossing options across SR50
- More bike racks throughout the community
- Construction of bike lanes and sidewalks

Challenges to Coordinated Transportation

In addition to identifying needs, the planning committee gathered information from stakeholders and used their own professional experience to identify challenges to providing coordinated transportation services. These challenges include the following:

- Several areas of the County lack affordable transportation options to coordinate with.
- Closed-door transportation providers are unable to coordinate with public transportation providers due to funding regulations.
- Transportation providers are working at full capacities and are unable to coordinate efforts.
- Communication between providers is not consistent.
- Different fares and ways of calculating fares prevent coordination of efforts.
- Public and private providers see little incentive to coordinate together.

Summary of Unmet Mobility Needs

The following table describes the identified unmet transportation needs that were identified and the method used to identify and prioritize each need. Needs are listed in order of their rank in highest to lowest priority.

Exhibit 1: Prioritized Unmet Mobility Needs

Rank	Unmet Need Description	Method Used to Identify and Rank Need
1	Expansion of Fixed-Route Services	Survey and Round Table Input
2	Additional Capacity for Door-to-Door Services, Especially Accessible Services	Survey and Round Table Input
3	Continued 5310 Funding for Athens on Demand Transit	Survey and Round Table Input
4	Extension of Service Hours	Survey and Round Table Input
5	Affordable Fares	Survey and Round Table Input
6	Continuation of Mobility Management Program	Coordinated Plan Planning Committee
7	Implementation of the Athens Active Transportation Plan	Coordinated Plan Planning Committee
8	Bike Path and Trail Extensions	Survey and Round Table Input
9	Addressing Energy and Environmental Concerns	Survey and Round Table Input
10	Coordination of Efforts	Survey and Round Table Input

V. Goals and Strategies

Developing Strategies to Address Gaps and Needs

Strategies for improving transportation for Athens County should address the service gaps and user needs identified in this plan, if they are to be effective. As described, the gaps and unmet needs were based on information obtained from geographic analysis, the attendees participating in the meetings, and responses to the public survey.

Based on information gathered throughout the planning process, HAPCAP developed the following strategies to address the gaps and unmet transportation needs. Priority levels are assigned by considering the primary funding sources that could be available to support plan implementation compared to the importance of meeting this unmet need expressed by the public and stakeholders. Not all strategies are activities specifically eligible for funding under the existing programs, nor is it guaranteed that sufficient funding will be available to achieve every strategy identified. In addition, the local stakeholders will need to provide support and commit to pursuing the strategies if they are to be accomplished. Nonetheless, these strategies have been tailored to 10 of the identified primary gaps and needs.

Below is an outline describing the prioritized strategies to address each of the identified unmet transportation needs and gaps in service.

Goal #1:

EXPANSION OF FIXED-ROUTE SERVICES THROUGHOUT THE COUNTY

Need(s) Being Addressed: Unavailability of affordable public transportation services connecting residents to job access, health care, social events, social service agencies, and educational opportunities.

Strategy 1.1:

Implement an expansion of fixed-route services to connect rural areas of the county to resources in the cities.

Timeline for Implementation: Present to January 2025

Action Steps:

- *Identify and document need for expansion of services. Include project in the local Coordinated Transportation Plan.*
- *Continued outreach of expansion of services with local governments, businesses, individuals and organizations.*
- *Create a pilot project based on data and public input.*
- *Identify funding sources.*

Parties Responsible for Leading Implementation: Athens County, Athens City, Hocking Athens Perry Community Action, Athens Public Transit

Parties Responsible for Supporting Implementation: Ohio Department of Transportation, Federal Transit Administration

Resources Needed: Funding, staff time, contract services, building space, vehicles, publications or printing, local cash, technology, capital needs

Potential Cost Range: Dependent on routes and frequency of services

Potential Funding Sources: Federal 5311 program, State of Ohio general funds, Ohio Elderly and Disabled Fare Assistance Program, Athens County Department of Job and Family Services route support, City of Athens income tax matching funds, local fare reimbursements, local service contracts, transportation tax levy.

Performance Measures/Targets:

- A completed pilot budget of the project
- Application of funding sources completed
- Expansion of services

Goal #2:

ADDITIONAL CAPACITY OF DOOR-TO-DOOR VAN SERVICES, ESPECIALLY ACCESSIBLE SERVICES

Need(s) Being Addressed: Accessible, public, and affordable door-to-door van services are currently running at full capacity making it difficult for residents to schedule services, including seniors and individuals with disabilities.

Strategy 1.1:

Implement additional vans and drivers into current accessible, public, and affordable door-to-door van services. Continue coordination of services between transportation providers.

Timeline for Implementation: Present to January 2025

Action Steps:

- *Identify and document the need for additional capacity of accessible, public, and affordable, door-to-door van services.*
- *Create a pilot project based on data and public input.*
- *Continued outreach and support for additional capacity of services.*
- *Identify potential funding opportunities and partnerships.*

Parties Responsible for Leading Implementation: Athens County, Athens City, Hocking Athens Perry Community Action, Athens on Demand Transit, United Seniors

Parties Responsible for Supporting Implementation: Ohio Department of Transportation, Federal Transportation Administration, Athens County Job and Family services, Athens County Board of Developmental Disabilities

Resources Needed: Funding, staff time, contract services, vehicles, building space, publications and printing, local cash, technology, capital needs

Potential Cost Range: Dependent on level of capacity added.

Potential Funding Sources: Contract revenue, ODOT 5310 Operations, Ohio Developmental Disabilities Council, Athens County Board of Developmental Disabilities,

Performance Measures/Targets:

- Identify the amount of additional capacity needed
- A completed pilot budget of the additional capacity
- Application of funding sources completed
- Addition of capacity

Goal #3:

CONTINUED 5310 FUNDING FOR ATHENS ON-DEMAND TRANSIT

Need(s) Being Addressed: Affordable, county-wide, door-to-door transportation services for seniors and individuals with disabilities. Continued and increased funding for AODT alleviates the need for local and contract matches.

Strategy 1.1:

Continued and increased funding of the Athens-on demand transit system through the 5310 program.

Timeline for Implementation: Present to January 2025

Action Steps:

- *Collect data and financial histories*
- *Request and advocate for an increase of 5310 funding and a decrease for local and contract match need*
- *Apply for increased funding for the Athens On-Demand Transit program*

Parties Responsible for Leading Implementation: Athens County, Athens City, Hocking Athens Perry Community Action, Athens On-Demand Transit, Ohio Department of Transportation

Parties Responsible for Supporting Implementation: Ohio Department of Transportation, Federal Transit Administration, Athens County Board of Developmentally Disabilities

Resources Needed: Funding, staff time, contract services, building space, vehicles, publications or printing, local cash, technology, capital needs

Potential Cost Range: Dependent on increases allowable

Potential Funding Sources: 5310 program

Performance Measures/Targets:

- Increase of funds allowable
- Application of funds allowable
- Acceptance of application for funds requested

Goal #4:

EXTENSION OF SERVICE HOURS

Need(s) Being Addressed: Current public transportation service hours are limited in the morning, evening, and weekends. Commuters and students cannot utilize the services due to service times and there are few affordable transportation options that operate on the weekends.

Strategy 1.1:

Extend service hours of fixed-route services and door-to-door van services to cover early morning hours, later evening hours, and on the weekend, especially Sunday.

Timeline for Implementation: Present to January 2025

Action Steps:

- *Identify and document the need for an extension of service hours*
- *Create a pilot project based on data and public input.*
- *Continued outreach and support for extension of service hours.*
- *Identify potential funding opportunities and partnerships*

Parties Responsible for Leading Implementation: Athens County, Athens City, Hocking Athens Perry Community Action, Athens Public Transit, Athens on Demand Transit

Parties Responsible for Supporting Implementation: Ohio Department of Transportation, Federal Transportation Administration, Athens County Job and Family services, Athens County Board of Developmental Disabilities, local businesses and organizations.

Resources Needed: Funding, staff time, contract services, vehicles, building space, publications and printing, local cash, technology, capital needs

Potential Cost Range: Dependent of transportation provider type and time extensions.

Potential Funding Sources: Contract revenue, ODOT 5310 & 5311 Operations, Ohio Developmental Disabilities Council, Athens County Board of Developmental Disabilities, Athens County Job and Family services

Performance Measures/Targets:

- Include supporting data in the Coordinated Plan
- A completed pilot budget of the additional capacity
- Application of funding sources completed
- Extension of service hours

Goal #5:

AFFORDABLE FARES FOR TRANSPORTATION SERVICES

Need(s) Being Addressed: Low-Income families and individuals, seniors, and individuals with disabilities are currently unable to utilize transportation options due to financial restrictions.

Strategy 1.1:

Conduct outreach for individuals and social service agencies about current affordable transportation options. Collect data and support for lowered or free fares in partnership with transportation providers and their funding sources.

Timeline for Implementation: January 2018 to January 2025

Action Steps:

- *Document need of lowered or free fares*
- *Conduct outreach of lowered or free fares*
- *Create a pilot project*
- *Identify potential funding sources*

Parties Responsible for Leading Implementation: Athens County

Parties Responsible for Supporting Implementation: Local transportation providers and funding sources

Resources Needed: Funding, staff time, contract services, vehicles, building space, publications and printing, local cash, technology, capital needs

Potential Cost Range: Dependent on project scale

Potential Funding Sources: Contract revenue, ODOT 5310 & 5311 Operations, Ohio Developmental Disabilities Council, Athens County Board of Developmental Disabilities, Athens County Job and Family services

Performance Measures/Targets:

- Completion of needs study.
- Completion of budget and funding needed to reduce fares.
- Application and awarding of funding.
- Completion of lowered or free fares.

Goal #6:

IMPLEMENTATION OF THE ATHENS COUNTY ACTIVE TRANSPORTATION PLAN

Need(s) Being Addressed: Lack of education, infrastructure, planning & policy, and data initiatives related to active transportation and complete streets policies.

Strategy 1.1:

The Athens County Active Transportation Plan was created by the Athens County Active Transportation team with the assistance of the Ohio Department of Health and the Ohio Department of Transportation. The plan is dedicated to increasing the safety of active transportation users and increase the number of Ohioans participating in active transportation. This plan includes a variety of goals such as implementing Complete Streets policies, installing bus stops and benches, and expanding bike path and lane infrastructure. A copy of this plan can be found in the appendix of this document.

Timeline for Implementation: Present to January 2023

Action Steps:

- *Create an Active Transportation Plan with a local team*
- *Conduct outreach, education, and advocacy regarding the Active Transportation Plan*
- *Collect data and evaluation measures*

Parties Responsible for Leading Implementation: Athens County Active Transportation Team

Parties Responsible for Supporting Implementation: Athens County, Hocking Athens Perry Community Action, Athens City County Department of Public Health, Ohio Department of Transportation, Ohio Department of Health

Resources Needed: Funding, staff time, building space, publications and printing, local cash, capital needs

Potential Cost Range: Dependent of projects currently underway.

Potential Funding Sources: Ohio Department of Natural Resources, Ohio Department of Health, Sisters of St. Joseph, City of Athens, Athens County, Buckeye Hills Regional Transportation Planning Organization

Performance Measures/Targets:

- Track amount of Active Transportation related events
- Increase in amount of transportation signage
- Funding awarded for projects
- Miles of infrastructure created
- Amount of Active Transportation policies passed

Goal #7:

CONTINUATION OF ATHENS MOBILITY MANAGEMENT PROGRAM

Need(s) Being Addressed: Currently there is a lack of knowledge about current transportation options and needs, the coordination of services, advocacy for transportation, and education and utilizations of services.

Strategy 1.1:

Survey and round table results have shown an overall lack of knowledge of current transportation services available. The mobility program will continue to educate the community, perform transit training, help connect individuals to transportation options, advocate for transportation in planning meetings, and encourage the coordination of services in the County. The Mobility program will continue to spearhead Athens County as a representative for regional efforts.

Timeline for Implementation: Present to completion of goals

Action Steps:

- *Increase understanding and awareness of community transportation needs*
- *Increase awareness of current community transportation options and programs*
- *Ensure that transportation consideration is included in local and regional planning activities*
- *Increase local capacity for transportation services*
- *Assist individuals with accessing all community transportation options*

Parties Responsible for Leading Implementation: Athens Mobility Manager, Hocking Athens Perry Community Action

Parties Responsible for Supporting Implementation: Athens County, Athens City, Athens County Children Services, Athens County Board of Developmental Disabilities, Ohio Department of Transportation

Resources Needed: Continued funding of Mobility Management grant

Potential Cost Range: \$100,000

Potential Funding Sources: Ohio Department of Transportation, Athens County, Athens City, Athens County Children Services, Athens County Board of Developmental Disabilities

Performance Measures/Targets:

- Quarterly mobility reports
- Increase of transportation use
- Completion of goals as listed in the Athens County Coordinated Transportation Plan

Goal #8:

EXPANSION OF BIKE PATHS AND TRAILS THROUGHOUT THE COUNTY / CONNECTING TO A STATE-WIDE SYSTEM

Need(s) Being Addressed: Lack of bike path connectivity to rural areas of the County resulting in unsafe walking and biking conditions, and a lack of access to active transportation opportunities.

Strategy 1.1:

The Hockhocking Adena bikeway serves as a main artery across the County with residents and tourists utilizing it recreationally and out of necessity to travel. The addition of spurs and trails connecting to villages and rural communities will provide safe and active access to social service agencies, places of employment, medical centers, educational institutions, and food access.

Timeline for Implementation: Present to January 2025

Action Steps:

- *Identify and document the need for extensions of the bike path*
- *Continue outreach and education on bike path safety and need*
- *Identify funding resources for mapping and creation of project*
- *Apply for funding sources*
- *Extend the Hockhocking Adena bikeway to rural areas in the County*

Parties Responsible for Leading Implementation: Athens County

Parties Responsible for Supporting Implementation: Athens County, Ohio Department of Natural Resources, Ohio Department of Transportation, Rails to Trails

Resources Needed: Funding, staff time, publications and printing, local cash, technology, capital needs

Potential Cost Range: Dependent on extension.

Potential Funding Sources: Ohio Department of Transportation, Ohio Department of Natural Resources, Athens County, Athens City

Performance Measures/Targets:

- Completion of needs study
- Completion of potential mapping out of project
- Award of funding
- Completion of extensions

Goal #9:

ADDRESSING ENERGY AND ENVIRONMENTAL CONCERNS

Need(s) Being Addressed: The need to reduce pollution and traffic and to develop innovative 'green' transportation initiatives and vehicles.

Strategy 1.1:

In order to reduce pollution and traffic Athens County will encourage through infrastructure and policy change carpooling, use of public transportation, walking, bicycling, and using multi-modal forms of transportation. Explore grant opportunities to develop innovative 'green' transportation initiatives and invest in 'green energy' vehicles.

Timeline for Implementation: December 2017 to December 2025

Action Steps:

- *Foster partnership with local energy organizations*
- *Conduct a feasibility study*
- *Identify funding sources for pilot project*

Parties Responsible for Leading Implementation: Clean Air Ohio, UpGrade Ohio, Southeast Ohio Public Energy Council (SOPEC), Hocking Athens Perry Community Action

Parties Responsible for Supporting Implementation: Athens County, Ohio Department of Transportation

Resources Needed: Funding, staff time, vehicles, local cash, technology, training, capital needs

Potential Cost Range: Dependent on project

Potential Funding Sources: Clean Fuels Ohio, UpGrade Ohio, Ohio Department of Transportation, Ohio Department of Natural Resources, Environmental Protection Agency,

Performance Measures/Targets:

- Award of funding applications
- Completion of feasibility studies
- Number of vehicles converted to green vehicles
- Completion of 'Park & Go' areas for multi-modal active transportation use

Goal #10:

COORDINATION OF EFFORTS AND SERVICES

Need(s) Being Addressed: Overlapping of services and efforts result in gaps throughout the community and within transportation providers.

Strategy 1.1:

A coordination of efforts and services would allow more vehicles to travel to more areas of the County and potentially provide rides to more individuals. As several transportation providers require training and safety certifications for their staff a coordination of services would all providers to receive this collectively and potentially provided by a provider.

Timeline for Implementation: December 2017 to December 2025

Action Steps:

- *Foster partnership with local transportation providers*
- *Utilize the information in the Coordinated Transportation Plan to identify gaps and coordination possibilities*
- *Begin a coordination of efforts and services*

Parties Responsible for Leading Implementation: The Athens Mobility Management Program, Hocking Athens Perry Community Action

Parties Responsible for Supporting Implementation: Ohio Department of Transportation, local transportation providers

Resources Needed: Funding, staff time, local cash, technology, training

Potential Cost Range: Dependent on project

Potential Funding Sources: The Athens Mobility Management Program

Performance Measures/Targets:

- Level of responses from transportation providers
- Conducting a coordinated training event
- Conducting a coordinated ride

VI. Plan Adoption

The Athens County Coordinated Transportation Plan was adopted by the Athens County Coordinated Transportation Planning Committee, a group of local organizations including an older adult and an individual with a disability.

The plan draft was open for public comment for 30 days on the Athens Mobility website and shared with transportation and human service providers.

The Athens County Coordinated Plan Planning Committee voted on the adoption of this document.

Appendix A: List of Planning Committee Participants

The planning committee consists of representation from local agencies as well as participation of individuals with disabilities, older adults, and members of the general public. More information about the planning committee is available upon request by contacting

Agency Representation

Name	Agency
Paul Logue	Athens City
Autumn Brown	Athens County Board of Developmental Disabilities
Melissa Parsons	Athens County Children Services
Megan Buskirk	Athens City-County Health Department
Lori Hibbard	Athens County Department of Job and Family Services
Jesse Powers	Athens County
Amy King	Athens County Public Libraries
Karen Pawloski	Buckeye Hills
Noah Trembly	Individuals with a Disability Representative
Kelly Hatas	Hocking Athens Perry Community Action
Gregg Andrews	Senior Representative
Joyce Lewis	United Seniors of Athens

In addition to participants listed above, the planning committee also included representation of older adults, people with disabilities, and members of the general public. In addition to hosting a planning committee, Athens County and other planning committee members also conducted a wide variety of activities designed to increase involvement of community stakeholders in identifying community resources, addressing community needs, and setting goals and priorities. More information about the efforts that occurred is available upon request. To request additional information please contact:

Jessie Schmitzer
Hocking Athens Perry Community Action
740-594-8499
jessie.schmitzer@hapcap.org

Appendix B: List of Annual Reviews and Plan Amendments

It is required that this plan be reviewed by the planning committee annually. For more information on when the next annual review will occur, how to be involved in the annual review process or to request information on how to make changes or corrections to this plan between annual reviews, please contact Jessie Schmitzer at 740-594-8499 or jessie.schmitzer@hapcap.org.

Annual Review - August 23rd, 2018

On August 23rd, 2018 the first Athens County Coordinated Plan Annual Review meeting was held with members of the committee present. The following changes that did not require an amendment include:

- An updated geographic area map with more detail
- The inclusion of unincorporated locations in the county
- An updated roads and highway map with more detail
- Two updated major trip generator maps
 - Health care facilities and social service agencies
 - Major employers and educational facilities
- Addition of the following providers and organizations to the list of existing transportation services:
 - Area Agency on Aging
 - Buckeye Hills Regional Council
 - Athens City-County Health Department
 - The Athens Village
 - Haugland School
 - The Salvation Army
- Deletion of the following providers from the list of existing transportation services:
 - Liberty Mobility Now

The following changes that did require a formal amendment are located on page 96 under “Prioritized Unmet Needs”:

1. “Additional Capacity for Door-to-Door services, **Epecially Accessible Services**”
 - This change was necessary in order to address the growing need of accessible services in the county.
 - This change could impact funding sources and funding changes
2. “Bike Path **and Trail** Extensions”
 - This change reflects the community’s increased interest in trail extension and projects, active transportation, and their need of funding.
 - This change could impact funding sources and funding changes.

Amendment

The plan was officially amended with all committee members voting in favor of the changes on October 9th, 2018, following a thirty day comment period.

Appendix C: Definitions

There are several terms used throughout the plan that may be unique to transportation providers or human service agencies. The terms are defined here for reference.

Coordination – Collaborative efforts toward understanding and meeting the mobility needs in the most appropriate, cost effective, and responsive manner.

FAST Act – Congress established the funding for Federal Transit Administration programs through authorizing legislation that amends Chapter 53 of Title 49 of the U.S. Code. On December 4, 2015, President Obama signed the Fixing America’s Surface Transportation (FAST) Act, reauthorizing surface transportation programs through Fiscal Year 2020.

Gaps in Service – A break in the continuity of available transportation resources such as a break between hours of operation or a break between two or more geographic areas.

Lead Agency – The organization responsible for facilitating outreach; composing a plan that meets the requirements of current Federal and State legislation; maintaining documentation from the planning process and making it available upon request; and leading stakeholders through annual reviews, amendments, and updates of the plan. The Lead Agency also is responsible for submitting the adopted Coordinated Plan and all amendments or updates to participating stakeholders and ODOT.

Planning Committee – (indicate if the planning committee has another formal name) The Planning Committee is composed of key community stakeholders. The Planning Committee members agree to actively participate in the planning process and act as the plan advisory and adopting entity.

Ridership – The total number of passengers who boarded transportation vehicles are counted each time they board a vehicle.

Section 5310 Program – Enhanced Mobility of Seniors & Individuals with Disabilities (49 U.S.C. 5310) provides Federal formula funding for the purpose of assisting private nonprofit groups in meeting the transportation needs of older adults and people with disabilities when the transportation service provided is unavailable, insufficient, or inappropriate to meeting these needs. The program aims to improve mobility for seniors and individuals with disabilities by removing barriers to transportation service and expanding transportation mobility options.

Section 5311 Program – The Formula Grants for Rural Areas program provides capital, planning, and operating assistance to states to support public transportation in rural areas with populations of less than 50,000 where many residents often rely on public transit to reach their destinations. The program also provides funding for state and national training and technical assistance through the Rural Transportation Assistance Program. Sub recipients may include state or local government authorities, nonprofit organizations, and operators of public transportation or intercity bus service.

Section 5307 Program – The Urbanized Area Formula Grants program (49 U.S.C. 5307) makes federal resources available to urbanized areas and to governors for transit capital and operating assistance in

urbanized areas and for transportation-related planning. An urbanized area is an incorporated area with a population of 50,000 or more.

Transportation – Transportation is broadly defined to include traditional transit, human service agency services, on-demand (taxi-like) services, bicycle and pedestrian programs and amenities.

Unmet Transportation Needs – Transportation that is wanted or desired but is not currently available.

Appendix D: Athens Transportation Survey: General Public

Athens County wants to hear from you! Transportation is an important part of our community. As we try to better understand what transportation needs Athens County residents have, please help us learn a little about what transportation you use, what gaps you see in our community, and what you would like to see transportation in Athens County look like in the future by filling out this survey. Feel free to share this survey with family, neighbors, friends, coworkers, or clients.

Once this information is collected, the Athens County Coordinated Transportation Plan will address these issues and plan for important changes to transportation in our area with the Ohio Department of Transportation. In the upcoming months public round tables regarding transportation will be held throughout Athens County that anyone can attend. If you would like more information on the upcoming public forums, have any questions, or need assistance filling out this survey, please contact the Athens County Mobility Coordinator, Jessie Schmitzer, at jessie.schmitzer@hapcap.org

I am (Check one box):

- Age 0-20
- Age 21-40
- Age 41-64
- Age 65 +

Are you currently a student?

- Yes
- No
- Other:

If you are currently a student, what school do you attend?

Are you an Athens County resident?

- Yes
- No
- Other:

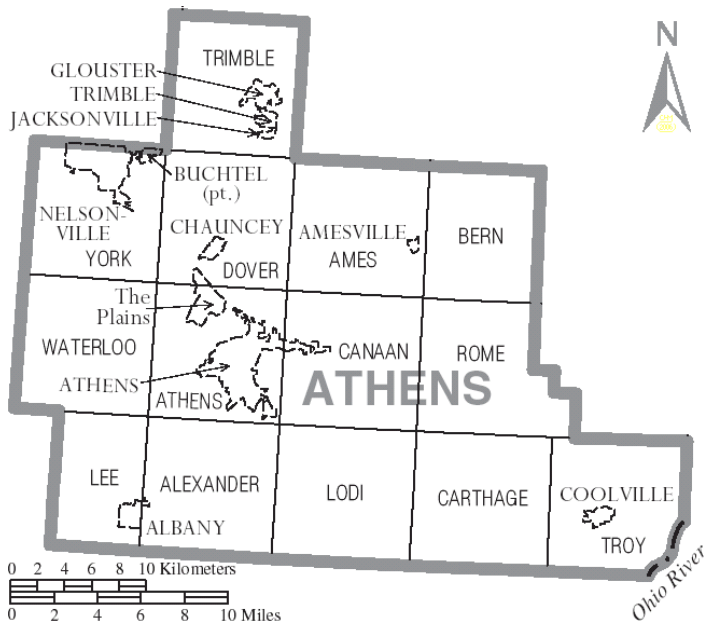
What city or village do you live in?

- Athens City
- Nelsonville

- The Plains
- Chauncey
- Amesville
- Albany
- Coolville
- Hockingport
- Glouster
- Trimble
- Buchtel
- Jacksonville
- New Marshfield
- I don't live in the cities or villages listed above
- Other:

If you do not live in the cities or villages listed above, what township do you live in? Refer to the map below for assistance.

- Athens Township
- Trimble Township
- York Township
- Dover Township
- Ames Township
- Lee Township
- Troy Township
- Alexander Township
- Lodi Township
- Canaan Township
- Bern Township
- Rome Township
- Carthage Township
- Waterloo Township
- Other:



Including you, how many people are in your household? (Check one box)

- 1
- 2
- 3
- 4
- 5
- Other:

How far away is your place of employment from your home?

- 0-5 miles
- 6-10 miles
- 11-20 miles
- 21-30 miles
- 30+ miles
- I am not currently employed
- Other:

I consider myself (Check all that apply to you):

- Disabled
- Low Income
- Elderly (60+)

- None of the above

Places I need to go (Check all that apply to you):

- to work
- to school / class
- to the doctor
- to the hospital
- to a drugstore / pharmacy
- to childcare
- to a grocery store
- to a department store
- to visit family and friends
- to a social event
- to court / legal services
- to Job and Family services
- to the Social Security Office
- to congregate meal sites / food pantries
- to church / religious services
- to OU events
- to Hocking College events
- to dialysis appointments
- a destination in Athens City
- a destination outside of Athens City
- a destination outside of Athens County
- Other:

How I get to my destination (Check all that apply to you:)

- I walk
- I ride a bicycle
- I use public transportation
- I drive my own car
- I ride with a friend
- I ride with a family member
- I call a social service provider
- I use a door-to-door van service

- I use a taxi
- Other:

How often do you miss work because you are unable to get there?

- One time a week
- One time a month
- One time every three months
- One time a year
- Never
- Other:

How often do you miss medical or counseling appointments because you are unable to get there?

- One time a week
- One time a month
- One time every three months
- One time a year
- Never
- Other:

How often do you miss legal or benefit assistance appointments because you are unable to get there?

- One time a week
- One time a month
- One time every three months
- One time a year
- Never
- Other:

I need a ride from someone else (Check how often):

- Every day
- One time a week
- Two times a week
- One time a month
- Two times a month
- Never

Other:

In the past six months, which of the following statement have been true for you: (Check all that apply)

- I do not have a drivers license
- My drivers license is suspended
- I do not have car insurance
- I can't afford car insurance
- I can't afford gasoline
- I do not have a vehicle
- My vehicle is broken down
- My vehicle is not reliable
- I can't afford to use a taxi service
- Other:

Regarding public transportation, which of the following are true for you (Check all that apply)

- It doesn't come to where I live
- It doesn't go to where I want to go
- I don't know how to use it / the maps
- The service hours do not work with my schedule
- I can't afford it
- It's not accessible for me
- It is unsafe
- I don't ride public transportation
- Other:

I am aware of transportation services that are available in Athens County (Check yes or no):

- Yes
- No
- Other:

If you checked yes, what transportation options are you aware of in Athens County?

I use public transportation (Check yes or no)

- Yes
- No
- Other:

If you check yes, please list what public transportation options you use in Athens County:

How much do you spend on transportation services in one month?

- \$0
- \$1-5
- \$5-10
- \$10-20
- \$20-30
- \$30+
- I don't use public transportation
- Other:

What improvements should be made to the current transportation services in Athens County?

If you do not use Athens County's transportation services, why not?



If you would like to be contacted about transportation options available in Athens County or would like to see the results of this survey, please leave a phone number or email address:

Appendix E: Athens Transportation Survey: 60+

Athens County wants to hear from you! Transportation for individuals aged 60 years or more is an important part of our community. As we try to better understand what transportation needs Athens County has, please help us learn a little about what transportation you use, what gaps you see in our community, and what you would like to see transportation in Athens County look like in the future by filling out this survey. Feel free to share this survey with family, neighbors, friends, coworkers, or clients.

Once this information is collected, the Athens County Coordinated Transportation Plan will address these issues and plan for important changes to transportation in our area with the Ohio Department of Transportation. In the upcoming months public round tables regarding transportation will be held throughout Athens County that anyone can attend. If you would like more information on the upcoming public forums, have any questions, or need assistance filling out this survey, please contact the Athens County Mobility Coordinator, Jessie Schmitzer, at jessie.schmitzer@hapcap.org

I am (Check one box)

- Age 60-65
- Age 66-70
- Age 71-75
- 76-80
- 80+
- Other:

Are you an Athens County resident?

- Yes
- No
- Other:

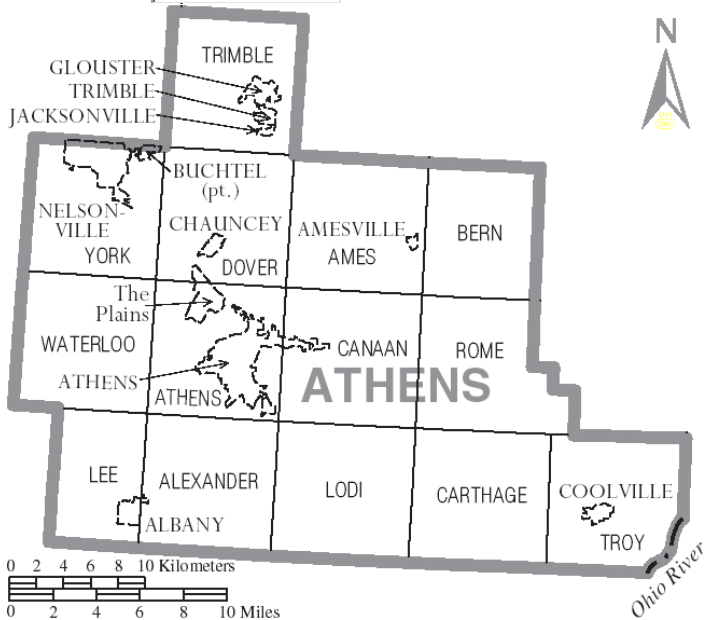
What city or village do you live in?

- Athens City
- Nelsonville
- The Plains
- Chauncey
- Amesville
- Albany
- Coolville
- Hockingport
- Glouster
- Trimble
- Buchtel
- Jacksonville
- I don't live in the cities or villages listed above
- New Marshfield
- Other:

If you do not live in the cities or villages listed about, what township do you live in? Refer to the map below for assistance.

- Athens Township
- Trimble Township
- York Township
- Dover Township
- Ames Township
- Lee Township
- Troy Township
- Alexander Township
- Lodi Township
- Canaan Township
- Bern Township
- Rome Township

- Carthage Township
- Waterloo Township
- Other:



Including you, how many people are in your household? (Check one box)

- 1
- 2
- 3
- 4
- 5
- I live in an assisted living facility
- Other:

Are you currently able to drive?

- Yes
- No
- Other:

Are there any circumstances under which you would prefer not to drive? (Check all that apply)

- At night time
- To a destination more than 3 miles away

- To a medical appointment when I am not feeling well
- On high-speed highways or interstates
- To an area of town that I do not know very well
- I do not drive
- Other:

If you are not currently able to drive, why not? (Check all that apply)

- I do not have my drivers licence
- I do not have a vehicle
- I can't afford car insurance
- My licence is suspended
- It is unsafe
- I am temporarily disabled
- My car is broken down
- My car is not reliable
- I can't afford gasoline
- Other:

If you drive, to which of the following local destinations do you drive (Check all that apply)

- to shopping / grocery store / bank
- to medical / dental appointments
- to social outings
- to religious Services
- to school
- to work
- to childcare
- to a drugstore / pharmacy
- to visit family and friends
- to dialysis appointments
- to congregate meal sites / food pantries
- to Job and Family services
- to the Social Security office
- to a destination in Athens City
- to a destination outside of Athens City

- to a destination outside of Athens County
- I don't drive to any destinations
- Other:

How do you get to your destinations? (Check all that apply to you)

- I walk
- I ride a bicycle
- I drive my own car
- I call a friend for a ride
- I call a family member for a ride
- I call a social service provider
- I ride public transportation
- I use a door-to-door van service
- I use a taxi service
- Other:

How often do you have medical appointments that are located outside of Athens County?

- Once a week
- Once a month
- Once a year
- Other:

Have you ever missed a medical appointment due to a lack of transportation?

- Yes
- No
- Other:

Have you ever missed a social event due to a lack of transportation?

- Yes
- No
- Other:

What days of the week are difficult for you to find transportation services? (Check all that apply)

- Monday
- Tuesday
- Wednesday
- Thursday
- Friday
- Saturday
- Sunday
- Other:

If you depend on others for any of your trips, who do you depend on? (Check all that apply)

- Spouse
- Children / Other relatives
- Friends / Neighbors
- Private services (taxis)
- Public services (bus system, Medicaid-paid transportation)
- Volunteers (from churches or non-profit organizations)
- Other:

Over the past 3 months, how much did you rely on family, friends, or neighbors for transportation?

- For all of my trips
- For about 75% of my trips
- For about 50% of my trips
- For about 25% of my trips
- For none of my trips
- Other:

Over the past 3 months, how much did you rely on public transportation (bus, door-to-door van service) for transportation?

- For all of my trips
- For about 75% of my trips
- For about 50% of my trips
- For about 25% of my trips
- For none of my trips
- Other:

How much do you spend on transportation services in one month?

- \$0
- \$1-5
- \$6-10
- \$10-20
- \$20-30
- \$30+
- Other:

Regarding public buses, which of the following are true for you? (Check all that apply)

- I do not know if we have a public transportation system
- I do not have enough information about times, routes, etc. to use them
- I do not feel safe taking public transit
- It takes too long to get to destinations
- Service is not reliable
- I cannot afford to pay for them
- I do not wish to use this service
- Service is not offered to destinations I want to visit
- The service is not provided near where I live
- They do not operate at times when I need to travel
- I do not use the public bus system
- I use the public bus system and have no issues
- Other:

Regarding door-to-door van services which of the following are true for you? (Check all that apply)

- I am not eligible to use these services
- I am not familiar with how to use these services
- These services are not provided where I live
- I have to schedule these services too far in advance to be useful
- These services are often full when I call for a ride
- These services do not feel safe
- These services are too expensive
- It takes too long to travel using these services

- I do not use a door-to-door van service
- I use a door-to-door van service and I have no issues
- Other:

**Regarding private transportation services (taxis), which of the following are true for you?
(Check all that apply)**

- I am not familiar with who provides these services
- These services do not feel safe
- These services are too expensive
- These services are not provided where I live
- These services do not operate at times when I need to travel
- I cannot use these services for health reasons
- These services are not reliable
- I do not use a taxi service
- I use a taxi service and I have no issues
- Other:

What improvements could be made to the transportation options available to individuals aged 60 or more in Athens County?



If you do not use Athens County's transportation services, why not?



If you would like to be contacted about transportation options available to you or would like to see the results of this survey, please leave a phone number or email address:

Appendix F: Athens Transportation Survey: Individuals with Disabilities

Athens County wants to hear from you! Transportation is an important part of our community, especially for individuals with disabilities. As we try to better understand what transportation needs disabled community members have, please help us learn a little about what transportation you use, what gaps you see in our community, and what you would like to see transportation in Athens County for look like in the future by filling out this survey. Feel free to share this survey with family, neighbors, friends, coworkers, or clients.

Once this information is collected, the Athens County Coordinated Transportation Plan will address these issues and plan for important changes to transportation in our area with the Ohio Department of Transportation. In the upcoming months public round tables regarding transportation will be held throughout Athens County that anyone can attend. If you would like more information on the upcoming public forums, have any questions, or need assistance filling out this survey, please contact the Athens County Mobility Coordinator, Jessie Schmitzer, at jessie.schmitzer@hapcap.org

I am (Check one box):

- Age 0-20
- Age 21-40
- Age 41-64
- Age 65 +

Are you an Athens County resident?

- Yes
- No
- Other:

What city or village do you live in?

- Athens City
- Nelsonville
- The Plains
- Chauncey
- Amesville
- Albany
- Coolville
- Hockingport
- Glouster
- Trimble
- Buchtel

- Jacksonville
- New Marshfield
- I don't live in the cities or villages listed above
- Other:

If you do not live in the cities or villages listed above, what township do you live in? Refer to the map below for assistance.

- Athens Township
- Trimble Township
- York Township
- Dover Township
- Ames Township
- Lee Township
- Troy Township
- Alexander Township
- Lodi Township
- Canaan Township
- Bern Township
- Rome Township
- Carthage Township
- Waterloo Township
- Other:

Are you currently a student?

- Yes
- No
- Other:

If you are a student, what school do you attend?

Including you, how many people live in your household?

- 1

- 2
- 3
- 4
- 5
- 6+
- Other:

What is your disability (Check all that apply)?

- Developmental
- Mobility (walker / wheelchair)
- Hearing
- Vision
- Other:

What do you use transportation services for? (Check all that apply)

- To or from work/job
- Attending a Day Hab
- Medical / health appointments
- Government Services (Social Security office, Job and Family Services office, etc.)
- Grocery shopping / bank / errands
- Religious services
- Visit family, friends
- To congregate meal sites / food pantries
- To or from childcare
- To or from school
- To or from social entertainment or community events
- To the drugstore / pharmacy
- Other:

What kind of transportation do you use now to get where you want and need to go? (Check all that you use.)

- I walk
- I ride a bike

- I drive my own car
- I ride the public bus
- I use a taxi service
- I ride with family members / neighbors / friends
- I ride with a care taker
- I use a door-to-door van service
- I use Non-Medical Transportation services (NMT)
- Other:

How far away is your place of employment from your home?

- 0-5 miles
- 6-10 miles
- 11-15 miles
- 16-20 miles
- 20-30 miles
- 30+
- I am not currently employed
- Other:

How often do you have medical appointments?

- Once a week
- Twice a week
- Once a month
- Twice a month
- Once a year
- Twice a year
- Other:

Do you often have medical appointments outside of Athens County?

- Yes
- No
- Other:

Have you ever missed an appointment due to a lack of transportation?

- Yes
- No
- Other:

What problems do you have getting the transportation you want? (Check all that apply)

- It doesn't come where I live
- It doesn't go where I want to go
- The service hours do not work with my schedule
- I can't afford it
- It's not accessible
- I need a personal assistant to be able to ride with me
- I don't know how to use it
- I don't have any problems getting the transportation that I want
- Other:

If you have a temporary emergency situation, what type of transportation do you use?

- Public Transportation (Bus or vans)
- Private Transportation (Taxis)
- Ambulance
- Call family, friends, or neighbors to drive me
- Have a care taker driver me
- Other:

What days of the week are the most difficult for you to use public transportation? (Check all that apply)

- Monday
- Tuesday
- Wednesday
- Thursday
- Friday
- Saturday
- Sunday

How much do you spend on transportation services per month?

- \$0

- \$1-\$10
- \$10-\$20
 - \$20-\$30
 - \$30 +
 - Other:

How can transportation for individuals with disabilities be improved in Athens County?

If you would like to be contacted about transportation options available in Athens County or would like to see the results of this survey, please leave a phone number or email address:

Appendix G: Athens Transportation Survey: Social Services / Non-Profit

Athens County wants to hear from local organizations! Transportation is an important part of our community. As we try to better understand what transportation needs Athens County residents have, please help us learn a little about what transportation barriers you see as you try to fulfill your agency's mission and goals in Athens County.

Once this information is collected, the Athens County Coordinated Transportation Plan will address these

issues and plan for important changes to transportation in our area with the Ohio Department of Transportation. In the upcoming months public round tables regarding transportation will be held throughout Athens County that anyone can attend. If you would like more information on the upcoming public forums, have any questions, or need assistance filling out this survey, please contact the Athens County Mobility Coordinator, Jessie Schmitzer, at jessie.schmitzer@hapcap.org

Name of agency / organization? (Optional)

Contact Information: (Optional)

What services does your organization offer?

- Medical Services
- Social Services
- Children and Family Services
- Low-Income Services
- Disabled Services
- Senior Services
- Youth Services
- Other:

Is your organization located in Athens County?

- Yes
- No
- Other:

What city or village is your organization located? (Check all that apply if you operate in multiple locations)

- Athens City
- Nelsonville
- The Plains
- Chauncey
- Amesville
- Albany
- Coolville

- Hockingport
- Glouster
- Trimble
- Buchtel
- Jacksonville
- The organization is not located in the cities or villages listed above
- New Marshfield
- Other:

If your organization is not located in the cities or villages listed above, what township is your organization located in? Refer to the map below for assistance.

- Athens Township
- Trimble Township
- York Township
- Dover Township
- Ames Township
- Lee Township
- Troy Township
- Alexander Township
- Lodi Township
- Canaan Township
- Bern Township
- Rome Township
- Carthage Township
- Waterloo Township
- Other:

What area does your organization serve?

- Athens County
- Certain areas of Athens County
- Other:

If you serve a certain area of Athens County, what area do you serve?

Would you consider transportation a barrier for community members to get to your organization / events / appointments?

- Yes
- No
- Other:

How important is it for clients to have transportation to utilize your services?

	1	2	3	4	5	
Not important at all	<input type="radio"/>	<input type="radio"/>	<input type="radio"/>	<input type="radio"/>	<input type="radio"/>	Extremely important

Does your organization provide transportation for clients?

- Yes
- No
- Other:

If you answered yes, is the transportation offered through your organization or through a third party?

- We manage and provide transportation
- We work with transportation providers outside of our agency to provide transportation
- We do not provide transportation to our clients
- Other:

Have clients ever missed appointments due to a lack of transportation?

- Yes
- No
- Other:

Have members of the staff missed scheduled work time to provide transportation to a friend or family member?

- Yes
- No
- Other:

If you answered yes, how often does this occur?

- Once a week
- Once a month
- Once a year
- Twice a week
- Twice a month
- Twice a year
- Staff do not miss scheduled work time to provide transportation to a friend or family member
- Other:

Have clients ever been dropped from a program or assistance due to a lack of transportation?

- Yes
- No
- Other:

Are you interested in coordinating with other agencies and transportation providers?

- Yes
- No
- Maybe
- Other:

What could be done to improve transportation options for community members utilizing your services?



If your organization would like to be contacted about transportation options available in Athens County or would like to see the results of this survey, please leave a phone number or email address:

Appendix H: Athens County Active Transportation Plan

Ohio Action Institute for Active Transportation
June 6 - 8, 2017
Crowne Plaza
Columbus, Ohio



Action Plan Team Worksheet for Athens County

Members:

1. Lead: Megan Buskirk, Athens City-County Health Department
2. Jessie Schmitzer, Hocking Athens Perry Community Action
3. Rob Delach, Ohio University
4. Peter Kotses, Athens City Council
5. Jessie Powers, Athens County Planner
6. Karen Pawloski, Buckeye Hills

Use this worksheet to begin developing your community's Action Plan for Active Transportation, based on the two key goals for the Ohio Action Plan:

1. Increase the safety of active transportation users
2. Increase the number of Ohioans participating in active transportation

Use information from team member individual worksheets, material presented in each session, and ideas generated during team planning sessions to complete Steps 1, 2 and 3 below for each Emphasis Area (Education, Infrastructure, Planning and Policy, Data).

Step 1: Write an overall objective

Step 2: Identify one or two strategies for the objective

Step 3: Identify one action steps for each of three timeframes (short, intermediate, and long) for each strategy, identifying who will lead the work, evaluation measures, and other items (funding, outreach, etc.)

Step 1: Objectives

As a team, identify an overarching goal for each focus area.

Emphasis Area	Objective
Education	Educate residents on safe active transportation practices, bike and pedestrian laws, and conduct and promote experiential learning experiences.
Infrastructure	Make Athens County safer and more conducive for residents to use active transportation.
Planning and Policy	Implement policies and procedures that encourage active commuting.
Data	Gather and collect data to improve our understanding of the bike/ped transportation network.

Steps 2 and 3: Strategies and Action Steps

Education

Strategy 1: In _____ years, my county will

[2] [3] [4] [5]

[increase] [emphasize] [advance] [improve] [incorporate] [develop] [standardize] [enforce] [enhance] [maintain]

Action steps

Educate residents on safe active transportation practices, bike and pedestrian laws, and conduct and promote experiential learning experiences.

Strategy 1	Timeframe	Action Steps	Leaders and Participants	Ideas for Performance and Evaluation Measures	Additional thoughts about funding, outreach, etc.
	Short term action step (next 60 days)	<p>Arrange for Choose Your Move bus placards to be implemented. Distributing Choose Your Move materials locally to: buses, bike shops, Athens City Council, Nelsonville City Council, worksites, schools, Athens City Employees, Hocking College, Athens County Fair,</p>	<p>Jessie Schmitzer Jessie Powers Pete Kotses Megan Buskirk</p>	<p>Observation in active commuting behavior. Surveys.</p>	
	Intermediate term action step (within 1 year)	<p>Launch a local social media campaign linking the Choose Your Move Facebook page to local Facebook pages to reach a wide variety of Athens County residents. Facebook pages include: Creating Healthy Communities, Athens Public Transit, HAPCAP, Buckeye Hills RTPO, Athens Bicycle Club, and Athens Bicycle.</p> <p>Websites include: HAPCAP, Athens Transit.org, County Planning website, Buckeye Hills/RTPO, Athens Bicycling Club.org, Athens County Engineer</p>	<p>Jessie Schmitzer Jessie Powers Pete Kotses Karen Pawolski Megan Buskirk</p>	<p>Likes, shares, comments, and website visits</p>	
Long term action step (within 5 years)					

STRATEGY 2: In _____ years, my county will

[2] [3] [4] [5]

[increase] [emphasize] [advance] [improve] [incorporate] [develop] [standardize] [enforce] [enhance]
[maintain]

Action steps

Educate residents on safe active transportation practices, bike and pedestrian laws, and conduct and promote experiential learning experiences.

Strategy 2	Timeframe	Action Step	Leadership and Participants	Performance and Evaluation Measures	Additional thoughts about funding, outreach, etc.
	Short term action step (next 60 days)	Plan and support local Yay Bikes! How we Roll Rides and Professional Development rides.	Megan Buskirk	Number of Yay Bikes! ride participants as well as post ride feedback survey data from participants.	
	Intermediate term action step (within 1 year)	Participate in area bike rodeos held by schools, communities, and OhioHealth O’Bleness Hospital. Host local Bike to Work Day (week) events.	Jessie Powers Megan Buskirk Pete Kotses Rob Delach	Track number of bike rodeos and experiential learning events. Track number of participants attending each event.	
	Long term action step (within 5 years)	Increase the number of bike rodeos and experiential learning events held in Athens County.		Track number of bike rodeos and experiential learning events. Track number of participants attending each event.	

Infrastructure

Strategy 1: In _____ years, my county will

[2] [3] [4] [5]

[increase] [emphasize] [advance] [improve] [incorporate] [develop] [standardize] [enforce] [enhance] [maintain]

Action steps

Make Athens County safer and more conducive for residents to use active transportation.

	Timeframe	Action Steps	Leaders and Participants	Ideas for Performance and Evaluation Measures	Additional thoughts about funding, outreach, etc.
Strategy 1	Short term action step (next 60 days)	Get post style way-finding signage installed along the Hockhocking Adena Bikeway.	Megan Buskirk	Amount of way-finding signage along the Hockhocking Adena Bikeway.	
	Intermediate term action step (within 1 year)	Implement a Park & Go system in Athens County, allowing residents to park their car and then use modes of active transportation either walking, busing, or biking.	Megan Buskirk Jessie Schmitzer Karen Pawoski		
	Long term action step (within 5 years)	Have a county-wide bike map with current and potentially funded future projects to identify gaps.	Rob Delach Jessie Powers		

STRATEGY 2: In _____ years, my county will

[2] [3] [4] [5]

[increase] [emphasize] [advance] [improve] [incorporate] [develop] [standardize] [enforce] [enhance]
[maintain]

Action steps

Make Athens County safer and more conducive for residents to use active transportation.

Strategy 2	Timeframe	Action Step	Leadership and Participants	Performance and Evaluation Measures	Additional thoughts about funding, outreach, etc.
	Short term action step (next 60 days)	A 12 bike covered bike shelter will be placed in targeted location in Athens County.	Megan Buskirk	Observation of use.	City of Athens
	Intermediate term action step (within 1 year)	<p>Install safe and accommodating bus stop shelters (We currently have none.)</p> <p>Grant funding for bike infrastructure. Matching the funds from the Chauncey bike path extension project. ODOT funds are for phase one, county must provide 5%, and the county will be applying for an ODNR grant, if not more.</p>	<p>Jessie Schmitzer</p> <p>Jessie Powers</p>	<p>Number of new shelters installed</p> <p>Dollars of grant funds awarded and project completions.</p> <p>How many active transportation infrastructure projects are connected to each other.</p>	Sisters of St. Joseph?
	Long term action step (within 5 years)	<p>A new regional recreation area with community trail heads and bike trails that will connect small rural communities and provide healthier opportunities for local citizens and tourist (economic driver) will be implemented all funding is secured.</p> <p>This will be a community collaborative between nonprofits and local government.</p>	Peter Kotses	Miles of active transportation infrastructure.	We are still looking for additional funding sources. Any ideas are welcome!

Planning and Policy

Strategy 1: In _____ years, my county will

[2] [3] [4] [5]

[increase] [emphasize] [advance] [improve] [incorporate] [develop] [standardize] [enforce] [enhance] [maintain]

Action steps

Implement policies and procedures that encourage active commuting.

	Timeframe	Action Steps	Leaders and Participants	Ideas for Performance and Evaluation Measures	Additional thoughts about funding, outreach, etc.
Strategy 1	Short term action step (next 60 days)	Nelsonville will finish drafting and vote on passing a complete streets policy for the City of Nelsonville.	Megan Buskirk Nelsonville City Council.	Number of policies passed. Resulting infrastructure improvements.	
	Intermediate term action step (within 1 year)	We plan on pursuing passing a complete streets policy for the City of Athens.	Megan Buskirk Peter Kotses	Number of policies passed. Resulting infrastructure improvements.	Mayor of Athens City Engineer City Planner Athens City Council
	Long term action step (within 5 years)	Buckeye Hills will conduct their long range comprehensive transportation plan in 2018 to be adopted in 2018. The first plan written in 2013 had very little alternative/active transportation language. A section on active transportation will be added for the region with Athens County being a model. The bronze American League of Bicyclists designation will be revisited and reevaluated every three years. We received the designation in 2015, so work to retain or improve that designation must be done.	Peter Kotses	Status of designation	Mayor of Athens

STRATEGY 2: In _____ years, my county will

[2] [3] [4] [5]

[increase] [emphasize] [advance] [improve] [incorporate] [develop] [standardize] [enforce] [enhance]
[maintain]

Action steps

Implement policies and procedures that encourage active commuting.

Strategy 2	Timeframe	Action Step	Leadership and Participants	Performance and Evaluation Measures	Additional thoughts about funding, outreach, etc.
	Short term action step (next 60 days)				
	Intermediate term action step (within 1 year)	<p>The county planner is working with the county engineer and the prosecutor’s office to work on a county complete streets policy and complete streets policies for the small villages in Athens County.</p> <p>The revised county transportation plan will be completed.</p>	<p>Jessie Powers</p>	<p>Number of policies passed and resulting infrastructure projects implemented.</p>	<p>County engineer County prosecutor</p>
	Long term action step (within 5 years)	<p>The City of Athens is working on revising its Comprehensive Plan. Through that process the City will conduct community engagement and walkability audits.</p> <p>The City of Athens Bike and Ped Advisory Committee is planned to be reinstated and become a permanent active group. The purpose of this group is to promote health, safety, and sustainable transportation through making bike and pedestrian use safe and accessible using legislation, planning, and education.</p>	<p>Megan Buskirk Peter Kotses Rob Delach</p>	<p>Amount of bike and pedestrian language included in the Comprehensive Plan.</p>	

Data

Strategy 1: In _____ years, my county will

[2] [3] [4] [5]

[increase] [emphasize] [advance] [improve] [incorporate] [develop] [standardize] [enforce] [enhance] [maintain]

Action steps

Gather and collect data to improve our understanding of the bike/ped transportation network.

	Timeframe	Action Steps	Leaders and Participants	Ideas for Performance and Evaluation Measures	Additional thoughts about funding, outreach, etc.
Strategy 1	Short term action step (next 60 days)				
	Intermediate term action step (within 1 year)	Begin stress-level bicycling network analysis for City of Athens, Gather State level data on crashes and vehicle traffic levels, incorporate bicycle and pedestrian counts (automated or manual).	Rob Delach Paul Logue	Utilize State-provided Stava Metro data to analyze where current bicycle usage is occurring	
	Long term action step (within 5 years)	Update County and City of Athens bike maps, create interactive on-line versions of bike map(s), maintain on-line information on status of Wayne NF MTB trail project	City of Athens County Engineer Jessie Powers		

